

APP CRS	Rwy Idg	7205
210°	TDZE	5913
	Apt Elev	5918

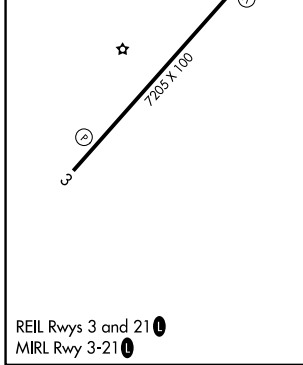
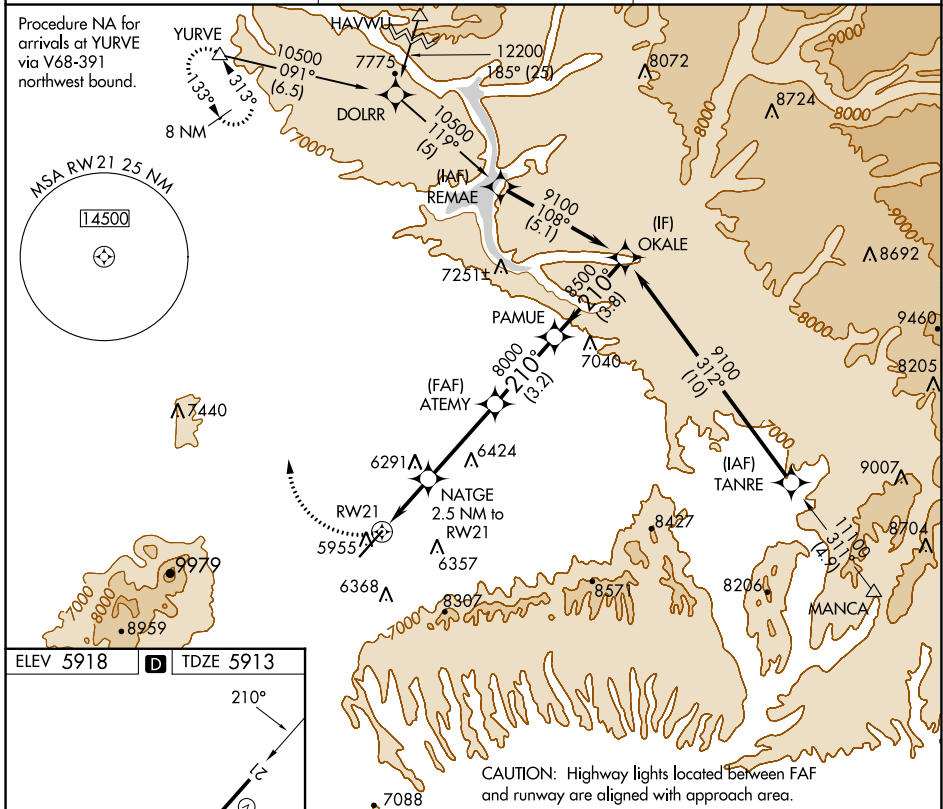
RNAV (GPS) Y RWY 21

CORTEZ MUNI (C/EZ)

▼ DME/DME RNP-0.3 NA. When VGSI inop, procedure NA at night. Circling NA southeast of Rwy 3-21.

▲ MISSED APPROACH: Climbing right turn to 9800 direct YURVE and hold.

ASOS 135.625	DENVER CENTER 118.575 348.7	UNICOM 122.8 (CTAF) 📻
------------------------	---------------------------------------	--



9800 YURVE ▲	VGSI and descent angles not coincident (VGSI Angle 3.00/TCH 50).			9100 OKALE
NATGE 2.5 NM to RW21	ATEMY	PAMUE	Procedure Turn NA	
RW21	≤ 3.15° TCH 50	8000	8500	9100
2.5 NM	3.6 NM	3.2 NM	3.8 NM	

CATEGORY	A	B	C	D
LNAV MDA	6560-1 647 (700-1)		6560-1¾ 647 (700-1¾)	6560-2 647 (700-2)
CIRCLING	6560-1 642 (700-1)	6680-2 762 (800-2)	6800-2¾ 882 (900-2¾)	7060-3 1142 (1200-3)

SW-1, 26 DEC 2024 to 23 JAN 2025

SW-1, 26 DEC 2024 to 23 JAN 2025