

WAAS CH <b>45724</b> <b>W17A</b>	APP CRS <b>169°</b>	Rwy Idg TDZE Apt Elev	<b>6065</b> <b>4760</b> <b>4760</b>
----------------------------------------	------------------------	-----------------------------	-------------------------------------------

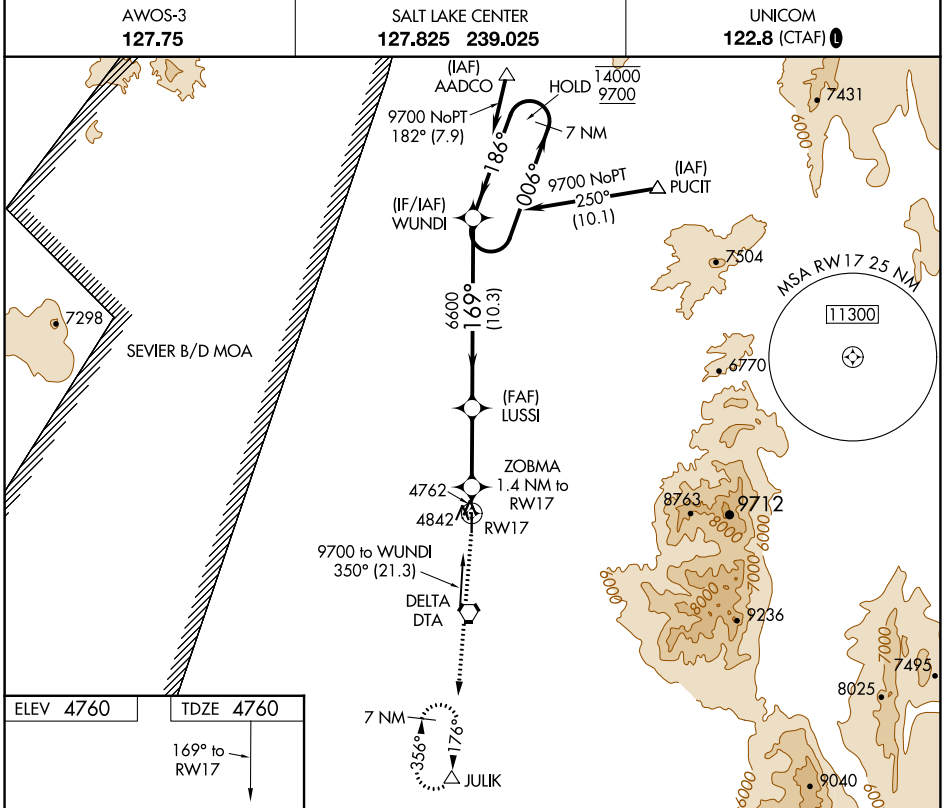
# RNAV (GPS) RWY 17

DELTA MUNI (DTA)

RNP APCH-GPS.

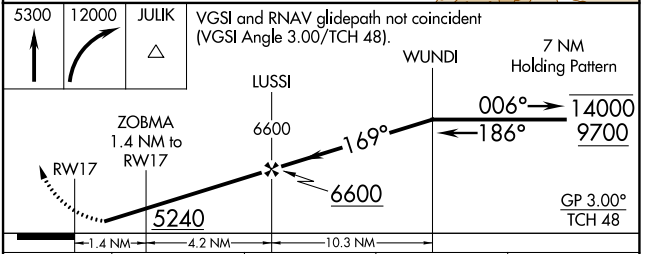
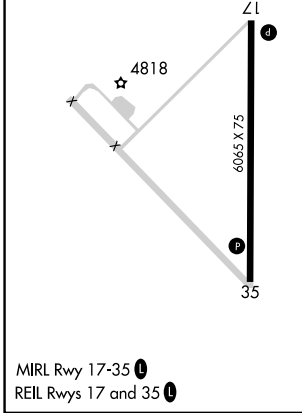
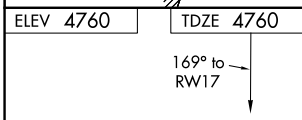
▼ Rwy 17 helicopter visibility reduction below 3/4 SM NA. For uncompensated Baro-VNAV systems, LNAV/VNAV NA below -24°C or above 54°C.

MISSED APPROACH: Climb to 5300, then climbing right turn to 12000 direct JULIK and hold, continue climb-in-hold to 12000.



SW-4, 26 DEC 2024 to 23 JAN 2025

SW-4, 26 DEC 2024 to 23 JAN 2025



CATEGORY	A	B	C	D
LPV DA		5010-1	250 (300-1)	
LNAV/VNAV DA		5010-1	250 (300-1)	
LNAV MDA		5100-1	340 (400-1)	