

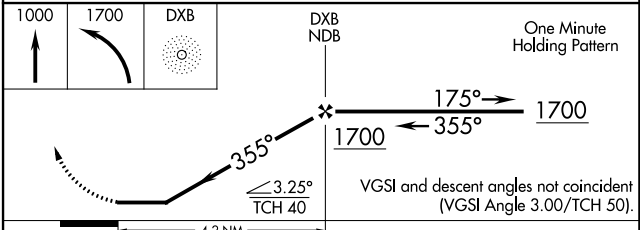
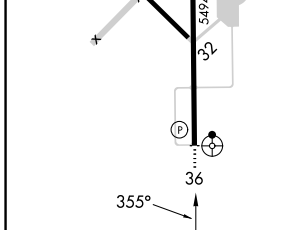
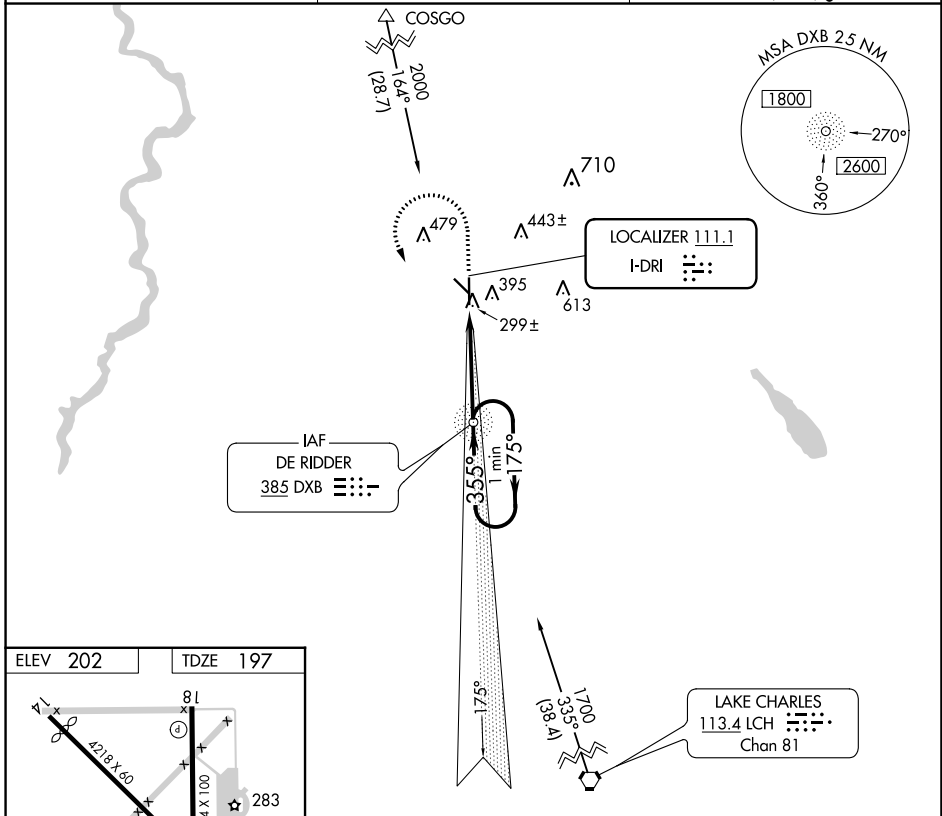
LOC I-DRI 111.1	APP CRS 355°	Rwy ldg TDZE Apt Elev	5494 197 202
---------------------------	------------------------	-----------------------------	---

LOC RWY 36
BEAUREGARD RGNL (DRI)

NA Inoperative table does not apply. ADF required. Visibility reduction by helicopters NA. When local altimeter setting not received, use Fort Polk altimeter setting and increase all MDAs 60 feet and S-36 visibility Cat C ½ SM and Circling Cats C/D visibility ¼ SM.

ODALS
MISSED APPROACH: Climb to 1000 then climbing left turn to 1700 direct DXB NDB and hold.

AWOS-3PT 118.225	POLK APP CON 123.7 261.3	UNICOM 122.8 (CTAF)
----------------------------	------------------------------------	-------------------------------



ELEV 202	TDZE 197																												
<table border="1"> <tr> <td>REIL Rwy 18</td> <td>MIRL Rwy 18-36</td> <td colspan="4"></td> </tr> <tr> <td colspan="6">FAF to MAP 4.2 NM</td> </tr> <tr> <td>Knots</td> <td>60</td> <td>90</td> <td>120</td> <td>150</td> <td>180</td> </tr> <tr> <td>Min:Sec</td> <td>4:12</td> <td>2:48</td> <td>2:06</td> <td>1:41</td> <td>1:24</td> </tr> </table>						REIL Rwy 18	MIRL Rwy 18-36					FAF to MAP 4.2 NM						Knots	60	90	120	150	180	Min:Sec	4:12	2:48	2:06	1:41	1:24
REIL Rwy 18	MIRL Rwy 18-36																												
FAF to MAP 4.2 NM																													
Knots	60	90	120	150	180																								
Min:Sec	4:12	2:48	2:06	1:41	1:24																								
CATEGORY	A	B	C	D																									
S-36	560-1 363 (400-1)			560-1¼ 363 (400-1¼)																									
CIRCLING	720-1 518 (600-1)		780-1½ 578 (600-1½)	1000-2½ 798 (800-2½)																									

SC-4, 26 DEC 2024 to 23 JAN 2025

SC-4, 26 DEC 2024 to 23 JAN 2025