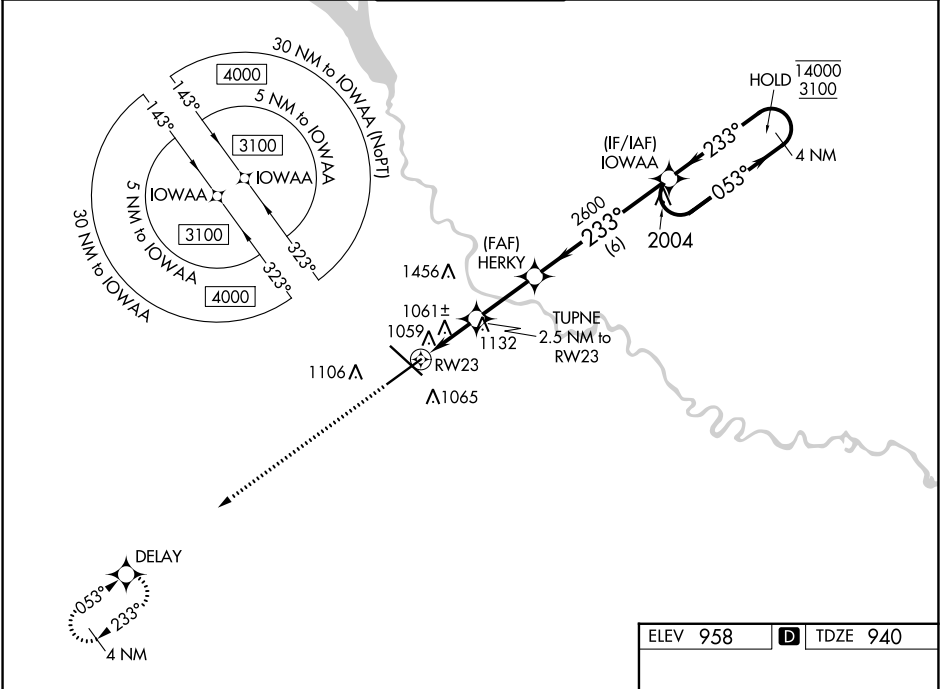


WAAS CH 97541 W23A	APP CRS 233°	Rwy Idg TDZE Apt Elev	9004 940 958
--	------------------------	-----------------------------	---

RNAV (GPS) RWY 23

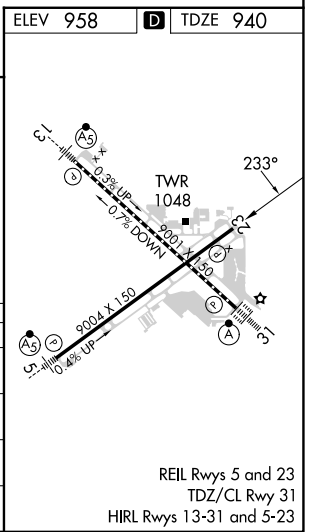
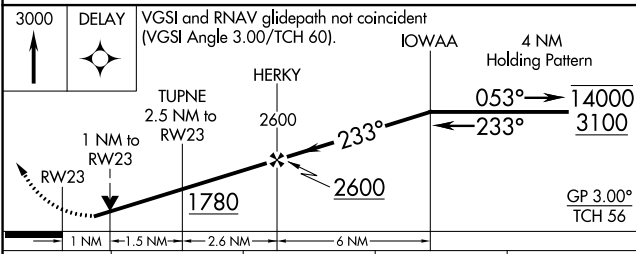
DES MOINES INTL (DSM)

RNP APCH - GPS.		MISSED APPROACH: Climb to 3000 direct DELAY and hold.	
<p>⚠ Rwy 23 helicopter visibility reduction below 3/4 SM NA. For uncompensated Baro-VNAV systems, LNAV/VNAV NA below -20°C or above 54°C.</p>			
ATIS 119.55	DES MOINES APP CON 123.9 307.15	DES MOINES TOWER 118.3 257.8	GND CON 121.9 348.6
		CLNC DEL 134.15 317.55	



NC-3, 26 DEC 2024 to 23 JAN 2025

NC-3, 26 DEC 2024 to 23 JAN 2025



CATEGORY	A	B	C	D
LPV DA		1263-1	323 (400-1)	
LNAV/VNAV DA		1220-7/8	280 (300-7/8)	
LNAV MDA		1320-1	380 (400-1)	
C CIRCLING	1420-1	462 (500-1)	1600-1 3/4 642 (700-1 3/4)	1760-2 1/2 802 (900-2 1/2)

REIL Rwy 5 and 23
TDZ/CL Rwy 31
HIRL Rwy 13-31 and 5-23