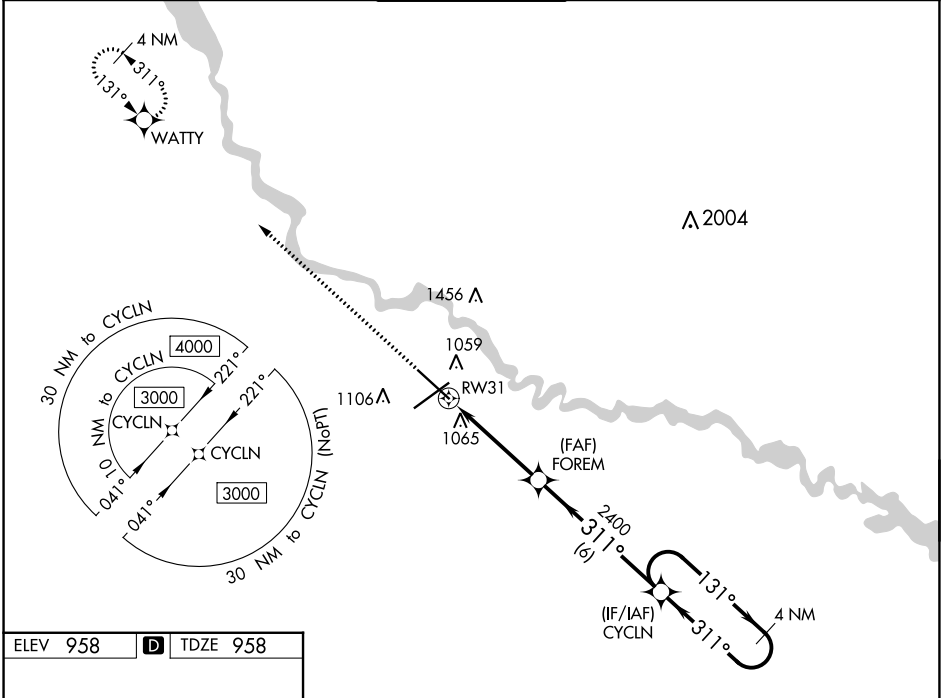


WAAS CH 78002 W31A	APP CRS 311°	Rwy Idg 9001 TDZE 958 Apt Elev 958
--	------------------------	---

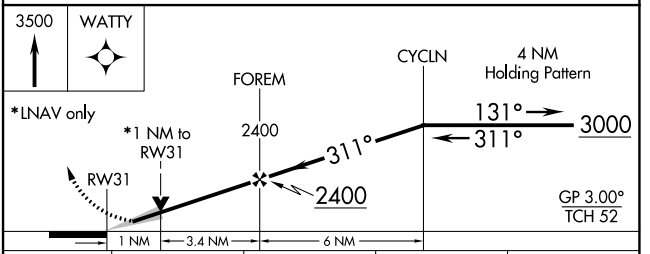
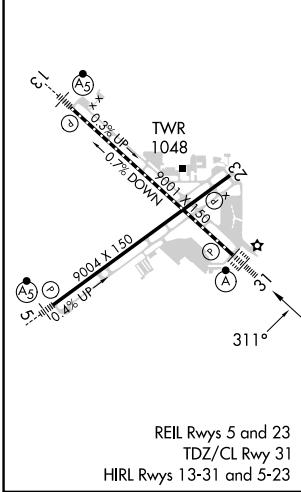
RNAV (GPS) RWY 31

DES MOINES INTL (DSM)

RNP APCH - GPS.		ALSF-2	MISSED APPROACH: Climb to 3500 direct WATTY and hold.	
<p>▽ For uncompensated Baro-VNAV systems, LNAV/VNAV NA below -20° or above 54°. For inop ALS, increase LNAV Cats C/D visibility to RVR 5500. Baro-VNAV and VDP NA when using Ankeny Rgnl altimeter setting.</p>				
ATIS 119.55	DES MOINES APP CON 123.9 307.15	DES MOINES TOWER 118.3 257.8	GND CON 121.9 348.6	CLNC DEL 134.15 317.55



ELEV 958	D	TDZE 958
----------	----------	----------



CATEGORY	A	B	C	D
LPV DA		1158/18	200 (200-½)	
LNAV/VNAV DA		1354/35	396 (400-⅝)	
LNAV MDA	1320/24	362 (400-½)	1320/35	362 (400-⅝)
C CIRCLING	1420-1	462 (500-1)	1600-1¾ 642 (700-1¾)	1760-2½ 802 (900-2½)

NC-3, 26 DEC 2024 to 23 JAN 2025

NC-3, 26 DEC 2024 to 23 JAN 2025