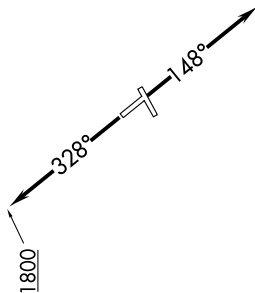


EC-1, 26 DEC 2024 to 23 JAN 2025

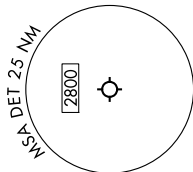
ATIS  
124.875  
GND CON  
121.85  
DETROIT CITY TOWER  
121.3 257.8  
DETROIT DEP CON  
134.3 284.0

RNAV 1 - DME/DME/IRU or GPS.  
RADAR required.

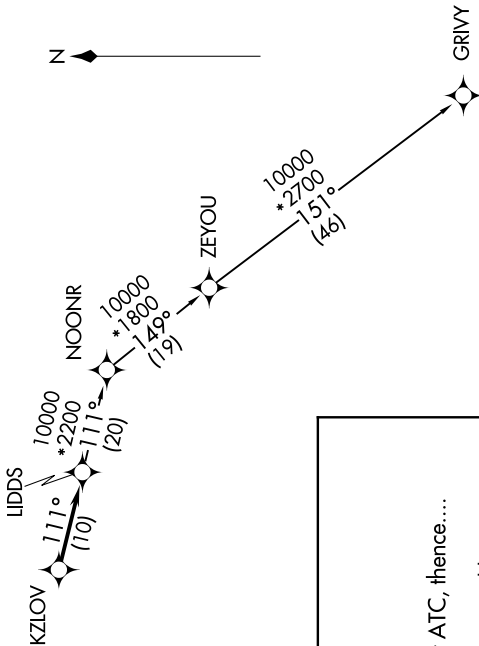
TAKEOFF MINIMUMS:  
Rwys 15, 33: Standard.



**TOP ALTITUDE:  
ASSIGNED BY ATC**



NOTE: Turbojet departures at/above 10000, maintain 280K until advised by ATC.



NOTE: Chart not to scale.

**DEPARTURE ROUTE DESCRIPTION**

TAKEOFF RUNWAY 15: Climb on heading 148° or as assigned by ATC, thence....

TAKEOFF RUNWAY 33: Climb on heading 328° to 1800 then as assigned by ATC, thence....

.... for RADAR vectors to KZLOV, then on track 111° to LIDDS, then on (transition). Maintain ATC assigned altitude, expect filed altitude 10 minutes after departure.

GRIVY TRANSITION (LIDDS3.GRIVY):

EC-1, 26 DEC 2024 to 23 JAN 2025