

EC-1, 26 DEC 2024 to 23 JAN 2025

DEPARTURE ROUTE DESCRIPTION

TAKEOFF RUNWAY 15: Climb on heading 148° or as assigned by ATC, thence....

TAKEOFF RUNWAY 33: Climb on heading 328° to 1800 then as assigned by ATC, thence....

....for RADAR vectors to JWELS, then on track 218° to SNDRS, then on (transition). Maintain ATC assigned altitude, expect filed altitude 10 minutes after departure.

BGHR T TRANSITION (SNDRS3.BGHR T):

TORRR TRANSITION (SNDRS3.TORRR):

TOP ALTITUDE: ASSIGNED BY ATC

RNAV-1 DME/DME/IRU or GPS.

RADAR required.

DETROIT DEP CON 134.3 284.0
 ATIS 124.875
 GND CON 121.85
 DETROIT CITY TOWER 121.3 257.8

DEPARTURE ROUTE DESCRIPTION

TAKEOFF RUNWAY 15: Climb on heading 148° or as assigned by ATC, thence....

TAKEOFF RUNWAY 33: Climb on heading 328° to 1800 then as assigned by ATC, thence....

....for RADAR vectors to JWELS, then on track 218° to SNDRS, then on (transition). Maintain ATC assigned altitude, expect filed altitude 10 minutes after departure.

BGHR T TRANSITION (SNDRS3.BGHR T):

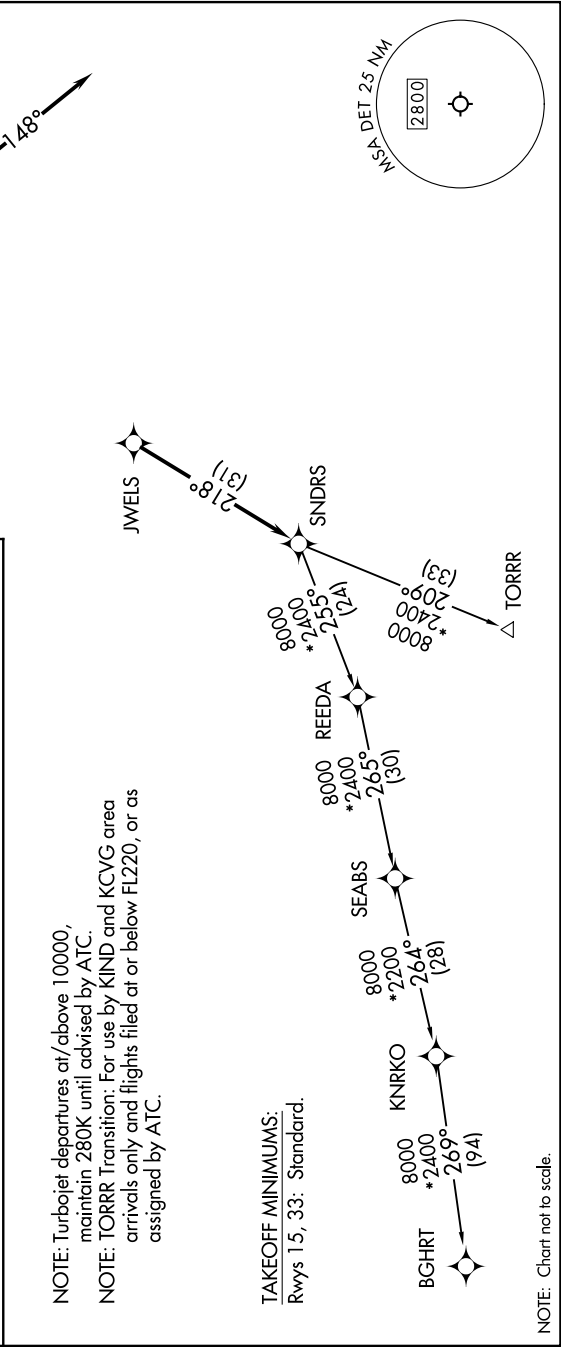
TORRR TRANSITION (SNDRS3.TORRR):

TOP ALTITUDE: ASSIGNED BY ATC

RNAV-1 DME/DME/IRU or GPS.

RADAR required.

DETROIT DEP CON 134.3 284.0
 ATIS 124.875
 GND CON 121.85
 DETROIT CITY TOWER 121.3 257.8



EC-1, 26 DEC 2024 to 23 JAN 2025

NOTE: Chart not to scale.