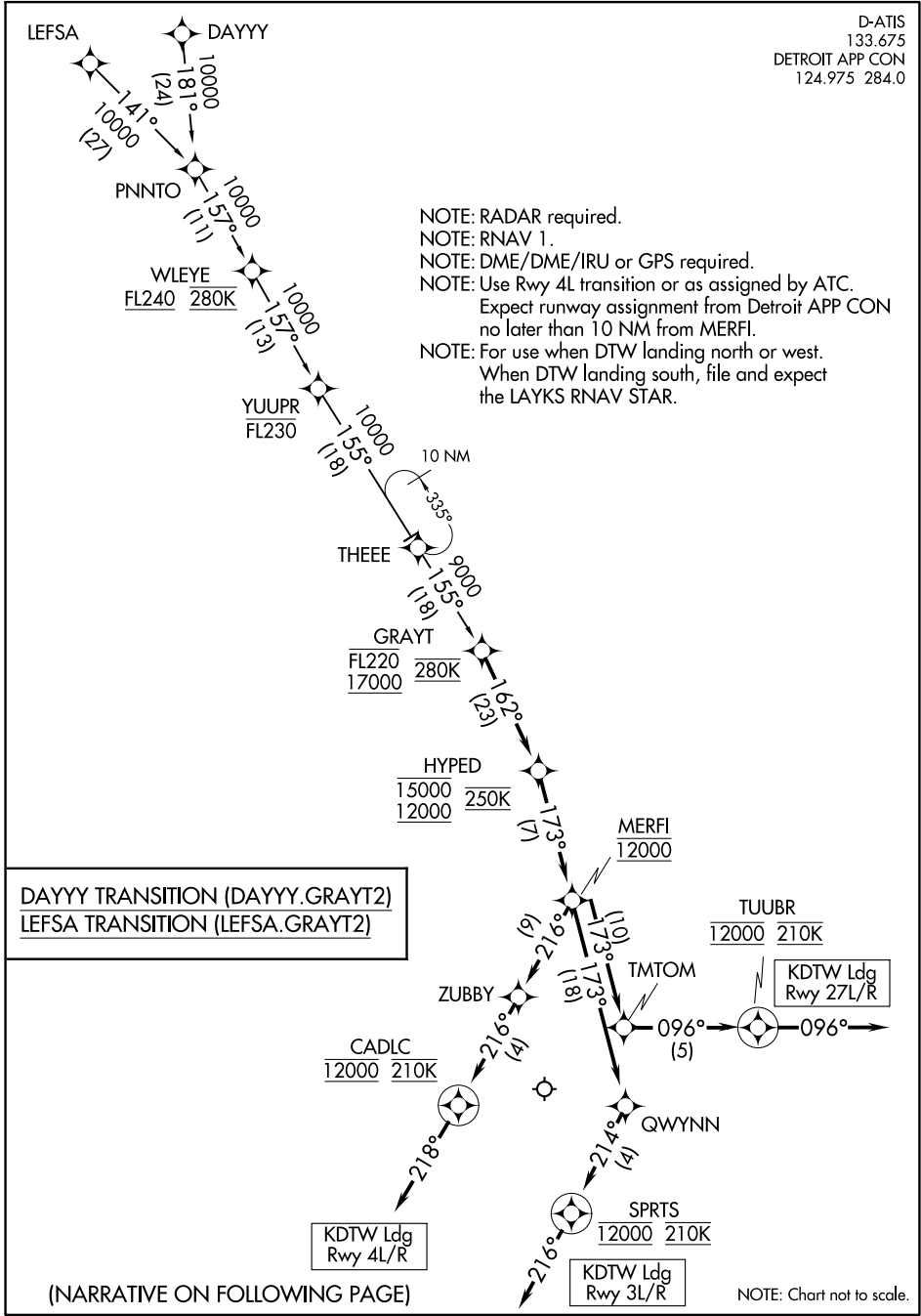


# GRAYT TWO ARRIVAL (RNAV)

D-ATIS  
133.675  
DETROIT APP CON  
124.975 284.0



EC-1, 26 DEC 2024 to 23 JAN 2025

EC-1, 26 DEC 2024 to 23 JAN 2025

(NARRATIVE ON FOLLOWING PAGE)

NOTE: Chart not to scale.

# GRAYT TWO ARRIVAL (RNAV)

(GRAYT.GRAYT2) 10OCT19

# GRAYT TWO ARRIVAL (RNAV)

## ARRIVAL ROUTE DESCRIPTION

From GRAYT on track 162° to cross HYPED between 12000 and 15000 and at 250K, then on track 173° to cross MERFI at 12000.

LANDING RWY 3L/R: From MERFI on track 173° to QWYNN, then on track 214° to cross SPRTS at 12000 and at 210K, then on track 216°. Expect RADAR vectors to final approach course.

LANDING RWY 4L/R: From MERFI on track 216° to ZUBBY, then on track 216° to cross CADLC at 12000 and at 210K, then on track 218°. Expect RADAR vectors to final approach course.

LANDING RWY 27L/R: From MERFI on track 173° to TMTOM, then on track 096° to cross TUUBR at 12000 and at 210K, then on track 096°. Expect RADAR vectors to final approach course.

EC-1, 26 DEC 2024 to 23 JAN 2025

EC-1, 26 DEC 2024 to 23 JAN 2025