

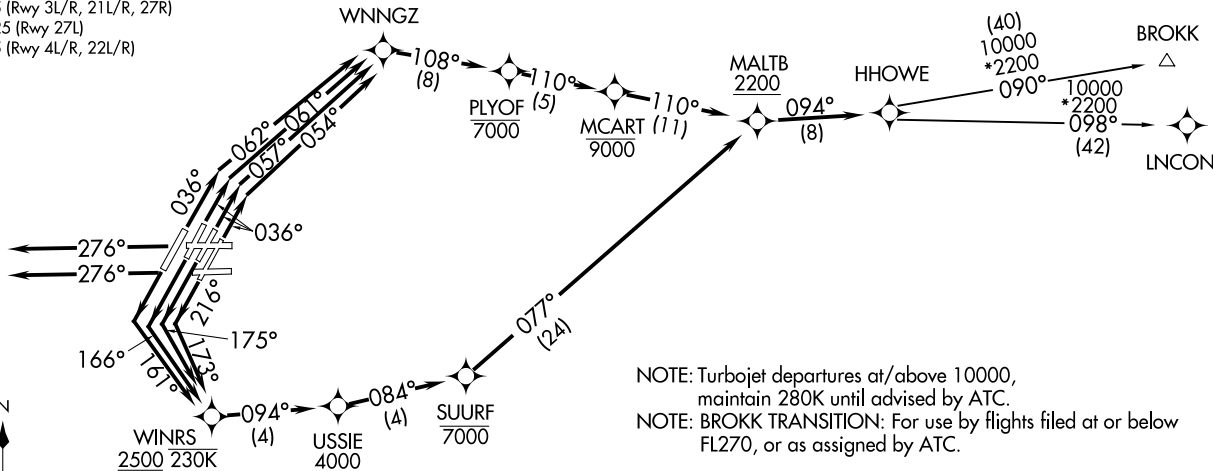
HHOWE FOUR DEPARTURE (RNAV)
(HHOWE4.HHOWE) 16MAY24

DETROIT, MICHIGAN
DETROIT METRO WAYNE COUNTY (DTW)

DETROIT DEP CON
125.525 284.0 (Rwy 27L/R)
132.025 284.0 (Rwy 3L/R, 4L/R, 21L/R, 22L/R)
D-ATIS 118.125
CLNC DEL 120.65
CPDLC
GND CON
121.8 (NW) 119.45 (NE)
132.725 (SW) 119.25 (SE)
METRO TOWER
118.4 317.725 (Rwy 3L/R, 21L/R, 27R)
128.75 317.725 (Rwy 27L)
135.0 317.725 (Rwy 4L/R, 22L/R)

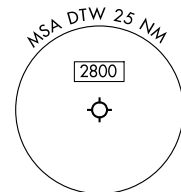
RNAV-1 DME/DME/IRU or GPS.
RADAR required.

TOP ALTITUDE:
17000



TAKEOFF MINIMUMS:
Rwy 27L/R: Standard
Rwy 3L/R, 4L/R, 21L/R, 22L/R: Standard with minimum climb of 500'/NM to 1146.

NOTE: Turbojet departures at/above 10000, maintain 280K until advised by ATC.
NOTE: BROKK TRANSITION: For use by flights filed at or below FL270, or as assigned by ATC.



NOTE: Chart not to scale.

(CONTINUED ON FOLLOWING PAGE)

(HHOWE4.HHOWE) 24137
HHOWE FOUR DEPARTURE (RNAV) AL-119 (FAA)
DETROIT METRO WAYNE COUNTY (DTW)
DETROIT, MICHIGAN

DEPARTURE ROUTE DESCRIPTION

SEE ADDITIONAL REQUIREMENTS ON AAUP.

TAKEOFF RUNWAY 3L: Climb on heading 036° to intercept course 057° to WNNGZ, then on track 108° to cross PLYOF at or below 7000, then on track 110° to cross MCART at or below 9000, then on track 110° to cross MALTB at or above 2200, thence....

TAKEOFF RUNWAY 3R: Climb on heading 036° to intercept course 054° to WNNGZ, then on track 108° to cross PLYOF at or below 7000, then on track 110° to cross MCART at or below 9000, then on track 110° to cross MALTB at or above 2200, thence....

TAKEOFF RUNWAY 4L: Climb on heading 036° to intercept course 062° to WNNGZ, then on track 108° to cross PLYOF at or below 7000, then on track 110° to cross MCART at or below 9000, then on track 110° to cross MALTB at or above 2200, thence....

TAKEOFF RUNWAY 4R: Climb on heading 036° to intercept course 061° to WNNGZ, then on track 108° to cross PLYOF at or below 7000, then on track 110° to cross MCART at or below 9000, then on track 110° to cross MALTB at or above 2200, thence....

TAKEOFF RUNWAY 21L: Climb on heading 216° to intercept course 173° to cross WINRS at or above 2500 and at or below 230K, then on track 094° to cross USSIE at or above 4000, then on track 084° to cross SUURF at or below 7000, then on track 077° to cross MALTB at or above 2200, thence....

TAKEOFF RUNWAY 21R: Climb on heading 216° to intercept course 175° to cross WINRS at or above 2500 and at or below 230K, then on track 094° to cross USSIE at or above 4000, then on track 084° to cross SUURF at or below 7000, then on track 077° to cross MALTB at or above 2200, thence....

TAKEOFF RUNWAY 22L: Climb on heading 216° to intercept course 166° to cross WINRS at or above 2500 and at or below 230K, then on track 094° to cross USSIE at or above 4000, then on track 084° to cross SUURF at or below 7000, then on track 077° to cross MALTB at or above 2200, thence....

TAKEOFF RUNWAY 22R: Climb on heading 216° to intercept course 161° to cross WINRS at or above 2500 and at or below 230K, then on track 094° to cross USSIE at or above 4000, then on track 084° to cross SUURF at or below 7000, then on track 077° to cross MALTB at or above 2200, thence....

TAKEOFF RUNWAYS 27L/R: Climb on heading 276° or as assigned by ATC, for RADAR vectors to cross MALTB at or above 2200, thence....

....on track 094° to HHOWE, then on (transition). Maintain 17000, expect filed altitude 10 minutes after departure.

BROKK TRANSITION (HHOWE4.BROKK):

LNCON TRANSITION (HHOWE4.LNCON):

EC-1, 26 DEC 2024 to 23 JAN 2025

EC-1, 26 DEC 2024 to 23 JAN 2025