


LOC/DME I-EPA 110.15 Chan 38(Y)	APP CRS 276°	Rwy Ldg TDZE Apt Elev	8500 630 645
---	------------------------	-----------------------------	---

ILS RWY 27L (SA CAT I & II)

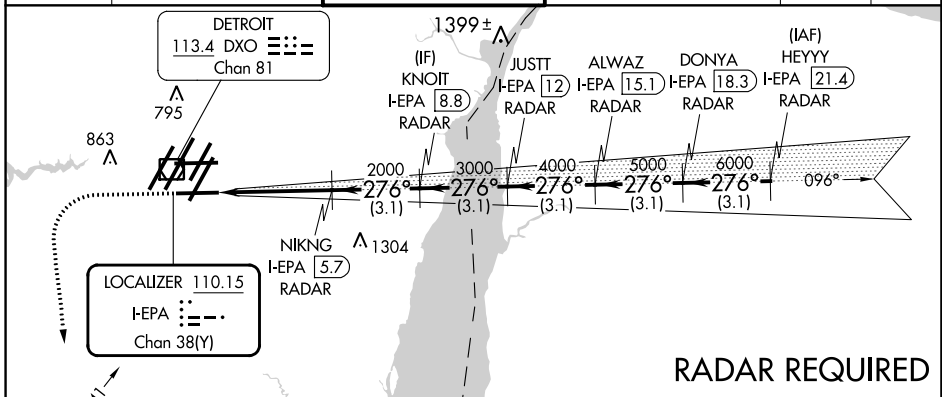
DETROIT METRO WAYNE COUNTY (DTW)

▼ DME or RADAR required. Simultaneous approach authorized. SA Cat I: Requires specific OPSPEC, MSPEC, or LOA approval and use of HUD to DH. SA Cat II: Reduced lighting: Requires specific OPSPEC, MSPEC, or LOA approval and use of Autoland or HUD to touchdown.

MALSR 

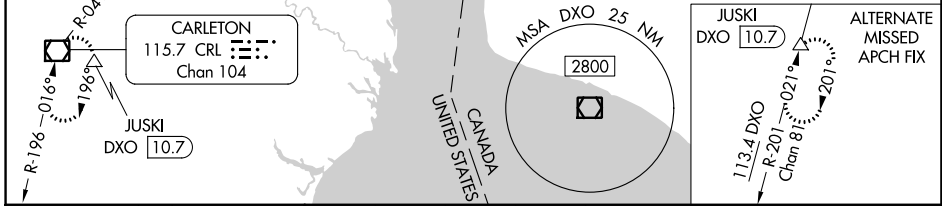
MISSED APPROACH: Climb to 1100 then climbing left turn to 4000 on heading 180° and CRL VOR/DME R-041 to CRL VOR/DME and hold, continue climb-in-hold to 4000.

D-ATIS 133.675	DETROIT APP CON 124.05 284.0	METRO TOWER 128.75 317.725	GND CON 121.8 (NW) 119.45 (NE) 132.725 (SW) 119.25 (SE)	CLNC DEL 120.65	CPDLC
--------------------------	--	--------------------------------------	---	---------------------------	-------

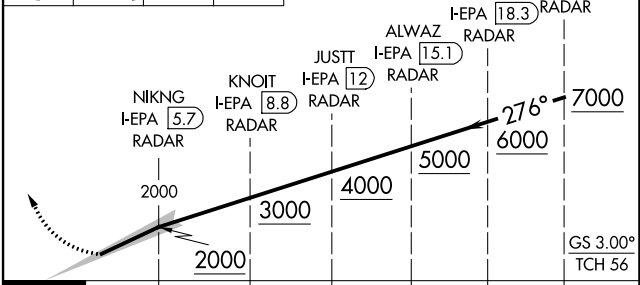
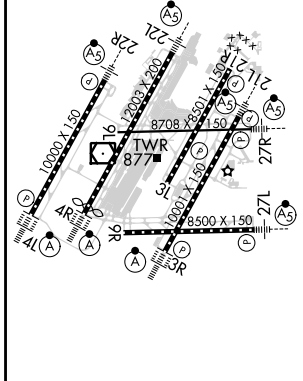


RADAR REQUIRED

JUSKI DXO 10.7 ALTERNATE MISSED APCH FIX



ELEV 645	D TDZE 630	1100	4000	CRL R-041	VGSI and ILS glidepath not coincident (VGSI Angle 3.00/TCH 71).
----------	-------------------	------	------	-----------	---



CATEGORY	A	B	C	D
S-ILS 27L		SA CAT I RA 146/16 150 DA 780		
S-ILS 27L		SA CAT II RA 96/16 100 DA 730		

SA CATEGORY I & II ILS SPECIAL AIRCREW & AIRCRAFT CERTIFICATION REQUIRED

EC-1, 26 DEC 2024 to 23 JAN 2025

EC-1, 26 DEC 2024 to 23 JAN 2025