

LOC/DME I-EJR <b>111.5</b> Chan <b>52</b>	APP CRS <b>216°</b>	Rwy Idg TDZE Apt Elev	<b>10001</b> <b>632</b> <b>645</b>
---	------------------------	-----------------------------	--

# ILS or LOC RWY 21L

DETROIT METRO WAYNE COUNTY (DTW)

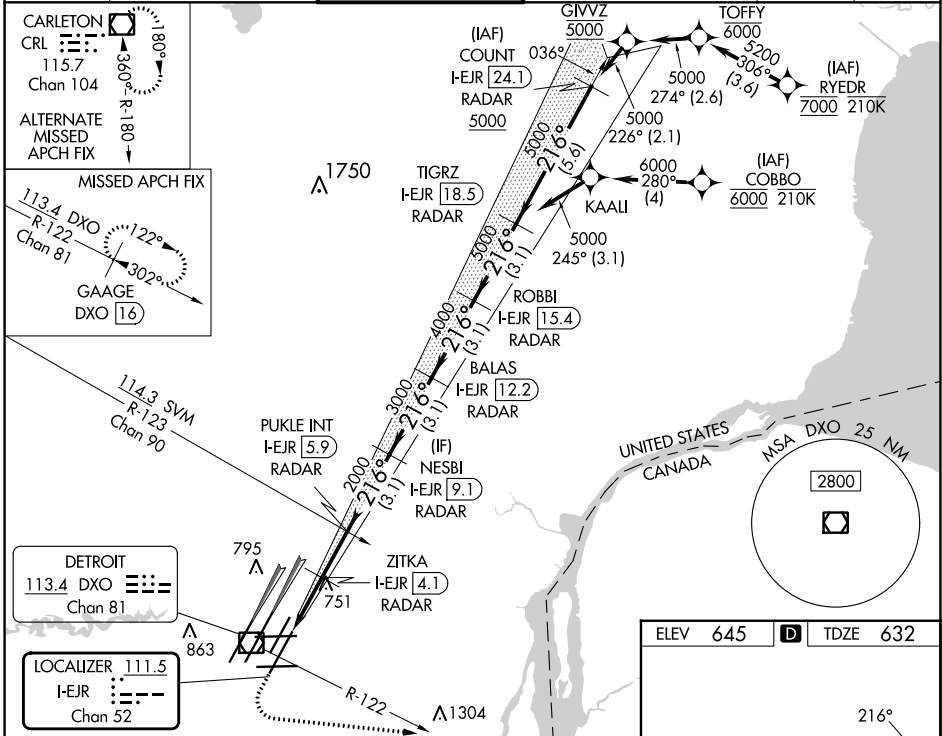
From RYEDR, COBBO: RNAV 1-DME/DME/IRU or GPS required. Aircraft not DME/DME/IRU or GPS equipped - RADAR required for procedure entry. DME or RADAR required.



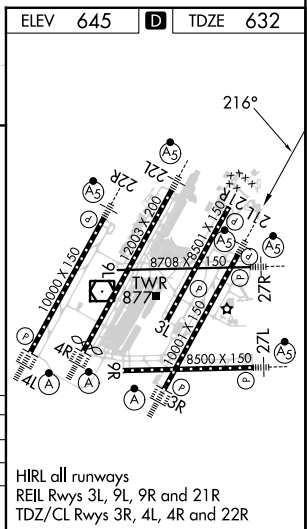
MISSED APPROACH: Climb to 1100 then climbing left turn to 4000 on DXO R-122 to GAAGE/DXO 16 DME and hold, continue climb-in-hold to 4000.

Simultaneous approach authorized.  
\*\*RVR 1800 authorized with use of FD or AP or HUD to DA.

D-ATIS <b>133.675</b>	DETROIT APP CON <b>125.15 284.0</b>	METRO TOWER <b>118.4 317.725</b>	GND CON <b>121.8 (NW) 119.45 (NE)</b> <b>132.725 (SW) 119.25 (SE)</b>	CLNC DEL <b>120.65</b>	CPDLC
--------------------------	--	-------------------------------------	---	---------------------------	-------



1100	4000	DXO R-122	GAAGE DXO 16	VGSI and ILS glidepath not coincident (VGSI Angle 3.00/TCH 80).				
*LOC only		ZITKA I-EJR (2.8)	PUKLE INT I-EJR (5.9)	NESBI I-EJR (9.1)	BALAS I-EJR (12.2)	ROBBI I-EJR (15.4)	TIGRZ I-EJR (18.5)	
1100		2000		3000		5000		
1 NM		1.3 NM	1.8 NM	3.1 NM	3.1 NM	3.1 NM	3.1 NM	
CATEGORY	A	B	C	D				
S-ILS 21L **	832/24							200 (200-½)
S-LOC 21L	1020/24	388 (400-½)	1020/35		388 (400-¾)			
☐ CIRCLING	1180-1	535 (600-1)	1180-1½		1240-2			
			535 (600-1½)		595 (600-2)			



HIRL all runways  
REIL Rwy's 3L, 9L, 9R and 21R  
TDZ/CL Rwy's 3R, 4L, 4R and 22R

EC-1, 26 DEC 2024 to 23 JAN 2025

EC-1, 26 DEC 2024 to 23 JAN 2025