

LOC/DME I-DWC 110.7 Chan 44	APP CRS 216°	Rwy Idg TDZE Apt Elev	12003 637 645
---	------------------------	-----------------------------	--

ILS or LOC RWY 22L

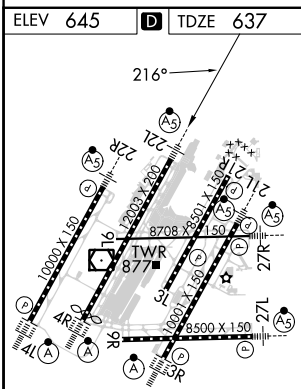
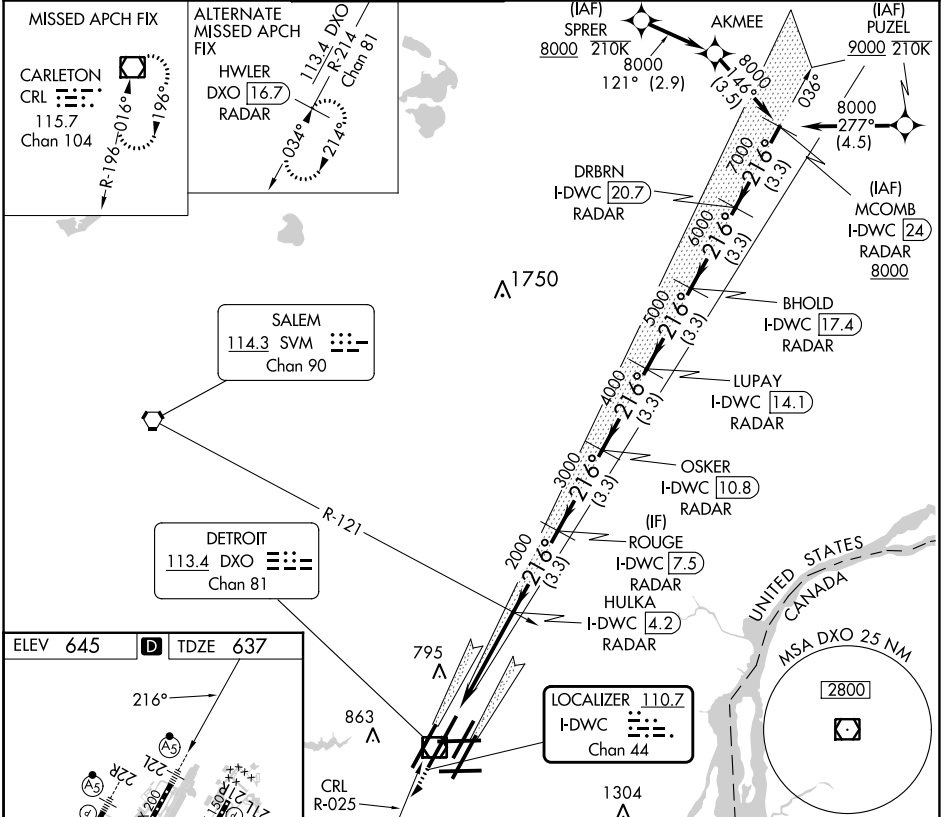
DETROIT METRO WAYNE COUNTY (DTW)

DME or RADAR required.
RNAV 1-DME/DME/IRU or RADAR required for procedure entry.

Simultaneous approach authorized.
#RVR 1800 authorized with use of FD or AP or HUD to DA.

MALSRS
MISSED APPROACH: Climb to 4000 on heading 216° and CRL VOR/DME R-025 to CRL VOR/DME and hold, continue climb-in-hold to 4000.

D-ATIS 133.675	DETROIT APP CON 124.05 284.0	METRO TOWER 128.125 317.725	GND CON 121.8 (NW) 132.725 (SW)	CLNC DEL 119.45 (NE) 119.25 (SE)	CPDLC 120.65
--------------------------	--	---------------------------------------	---	--	------------------------



ELEV 645	TDZE 637	* LOC only		BHOLD I-DWC 17.4	DRBRN I-DWC 20.7	MCOMB I-DWC 24
4000	hdg 216°	CRL R-025	OSKER I-DWC 10.8	LUPAY I-DWC 14.1	DRBRN I-DWC 20.7	MCOMB I-DWC 24
I-DWC DME ANTENNA 0.2	HULKA I-DWC 4.2	ROUGE I-DWC 7.5	OSKER I-DWC 10.8	LUPAY I-DWC 14.1	BHOLD I-DWC 17.4	DRBRN I-DWC 20.7
I-DWC 2000	* I-DWC 2000	ROUGE I-DWC 7.5	OSKER I-DWC 10.8	LUPAY I-DWC 14.1	BHOLD I-DWC 17.4	DRBRN I-DWC 20.7
2000	3000	4000	5000	6000	7000	8000
1 NM	3.3 NM	3.3 NM	3.3 NM	3.3 NM	3.3 NM	3.3 NM

TDZ/CL Rwy 3L, 4L, 4R and 22R	REIL Rwy 3L, 9L, 9R and 21R	HIRL all runways		
CATEGORY	A	B	C	D
S-ILS 22L#	837/24			
S-LOC 22L	1020/24	383 (400-1/2)	1020/35	383 (400-1/2)
CIRCLING	1180-1	535 (600-1)	1180-1 1/2	535 (600-1 1/2)
			1240-2	595 (600-2)

EC-1, 26 DEC 2024 to 23 JAN 2025

EC-1, 26 DEC 2024 to 23 JAN 2025