


LOC I-DMI <b>108.5</b>	APP CRS <b>276°</b>	Rwy ldg TDZE Apt Elev	<b>8708</b> <b>635</b> <b>645</b>
---------------------------	------------------------	-----------------------------	---

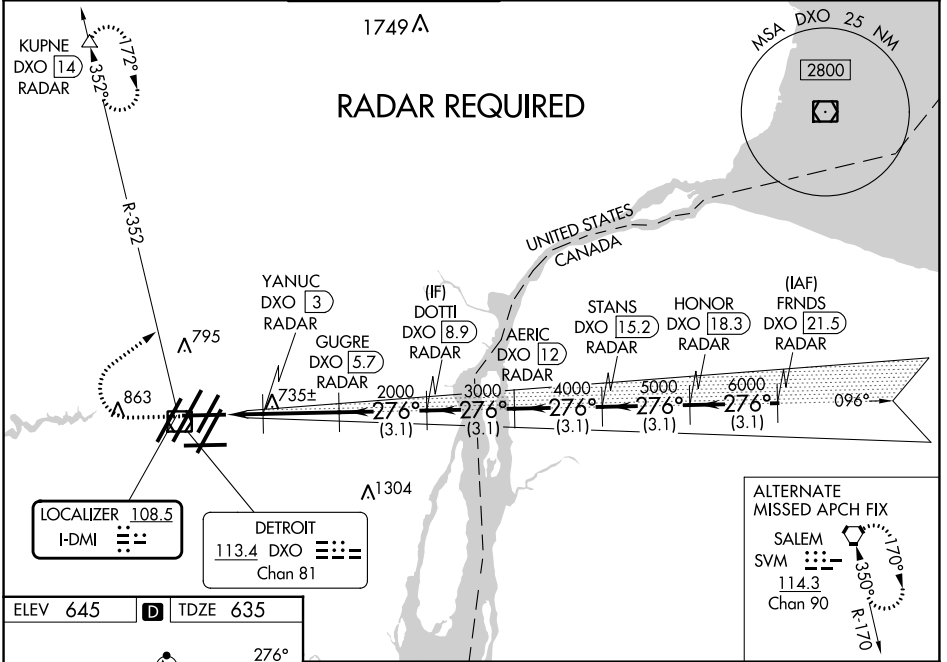
# ILS or LOC RWY 27R

DETROIT METRO WAYNE COUNTY (DTW)

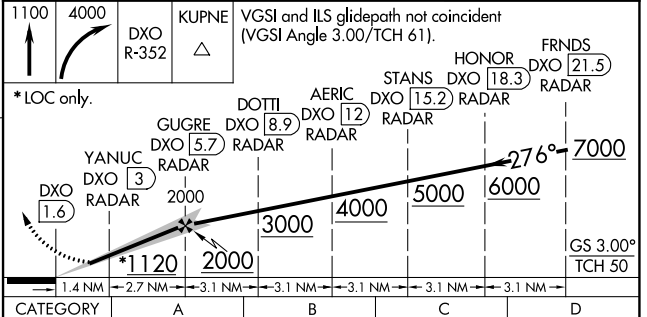
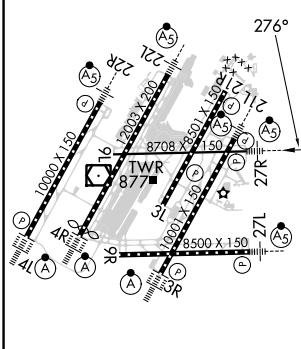
**▽** DME or RADAR required. Simultaneous approach authorized. DME from DXO VOR/DME. Simultaneous reception of I-DMI and DXO DME required. For inop ALS, increase S-LOC 27R Cats C and D visibility to RVR 5500.  
**\*\* RVR 1800 authorized with use of FD or AP or HUD to DA.**

**MALS**  
  
**MISSED APPROACH:** Climb to 1100 then climbing right turn to 4000 on DXO VOR/DME R-352 to KUPNE/DXO 14 DME/RADAR and hold, continue climb-in-hold to 4000.

D-ATIS <b>133.675</b>	DETROIT APP CON <b>125.15 284.0</b>	METRO TOWER <b>118.4 317.725</b>	GND CON <b>121.8</b> (NW) <b>119.45</b> (NE) <b>132.725</b> (SW) <b>119.25</b> (SE)	CLNC DEL <b>120.65</b>	CPDLC
--------------------------	--	-------------------------------------	---	---------------------------	-------



ELEV 645	<b>D</b>	TDZE 635
----------	----------	----------



TDZ/CL Rwy 3R, 4L, 4R and 22R  
 REIL Rwy 3L, 9L, 9R and 21R  
 HIRL all runways

FAF to MAP 4.1 NM

Knots	60	90	120	150	180
Min:Sec	4:06	2:44	2:03	1:38	1:22

CATEGORY	A	B	C	D
S-ILS 27R	<b>** 835/24 200 (200-½)</b>			
S-LOC 27R	1000/24	365 (400-½)	1000/35	365 (400-¾)
<b>C</b> CIRCLING	1180-1	535 (600-1)	1180-1½ 535 (600-½)	1240-2 595 (600-2)

EC-1, 26 DEC 2024 to 23 JAN 2025

EC-1, 26 DEC 2024 to 23 JAN 2025