

# ILS PRM Y RWY 22R (CLOSE PARALLEL)

DETROIT METRO WAYNE COUNTY (DTW)

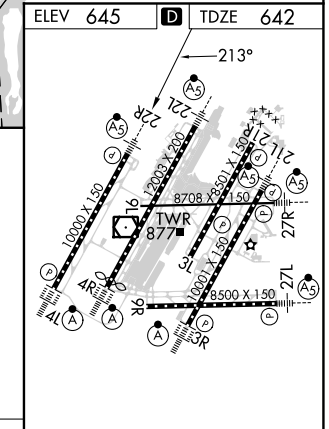
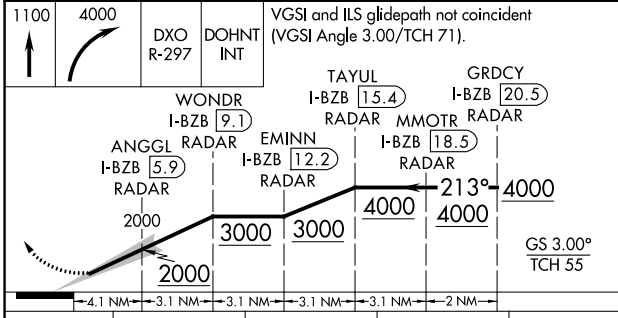
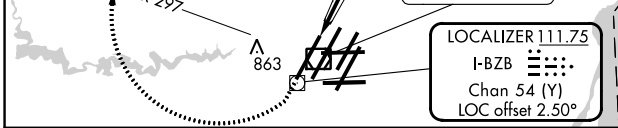
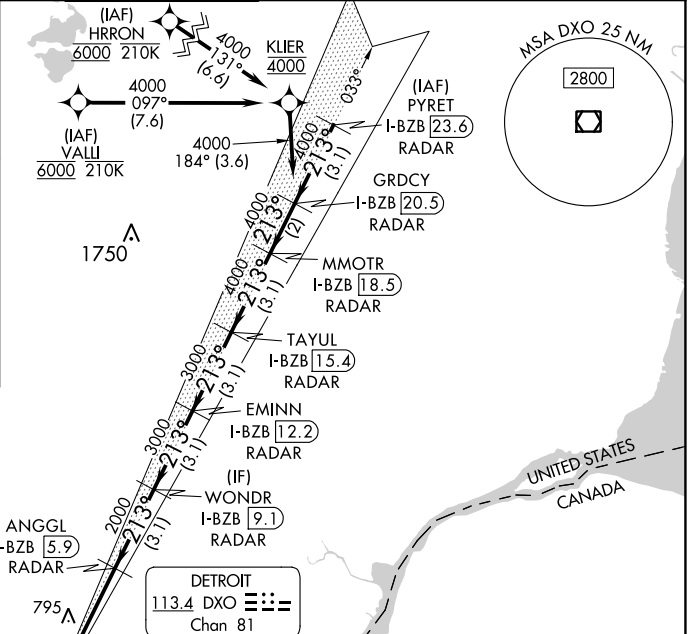
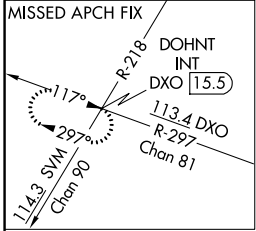
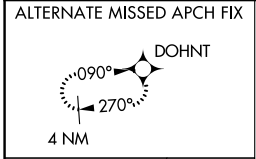
LOC/DME I-BZB <b>111.75</b>	APP CRS <b>213°</b>	Rwy Idg TDZE Apt Elev <b>10000</b> <b>642</b> <b>645</b>
Chan <b>54 (Y)</b>		

RNAV 1-GPS, HRRON and VALLI: RNAV 1-DME/DME/IRU or GPS required.  
Aircraft not DME/DME/IRU or GPS equipped - RADAR required for procedure entry.

Simultaneous approach authorized.  
Procedure NA when glide slope not available (ILS procedures only).  
Dual VHF Comm required. See additional requirements on AAUP.

MALSR 	MISSED APPROACH: Climb to 1100 then climbing right turn to 4000 on DXO VOR/DME R-297 to DOHNT INT/DXO 15.5 DME and hold.
-----------	--

D-ATIS <b>133.675</b>	DETROIT APP CON <b>124.05 284.0</b>	METRO TOWER <b>135.0 317.275</b> <b>PRM 127.05</b>	GND CON <b>121.8 (NW) 119.45 (NE)</b> <b>132.725 (SW) 119.25 (SE)</b>	CLNC DEL <b>120.65</b>	CPDLC
--------------------------	--	--	---	---------------------------	-------



CATEGORY	A	B	C	D
S-ILS 22R		892/24	250 (300-1/2)	

TDZ/CL Rwys 3R, 4L, 4R and 22R  
REIL Rwys 3L, 9L, 9R and 21R  
HIRL all runways

# ILS PRM Y RWY 22R (CLOSE PARALLEL)

EC-1, 26 DEC 2024 to 23 JAN 2025

EC-1, 26 DEC 2024 to 23 JAN 2025