

LOC/DME I-JKI 111.95	APP CRS 216°	Rwy Idg TDZE 642 Apt Elev 645	10000
Chan 56 (Y)			

ILS Z RWY 22R (SA CAT I & II)

DETROIT METRO WAYNE COUNTY (DTW)

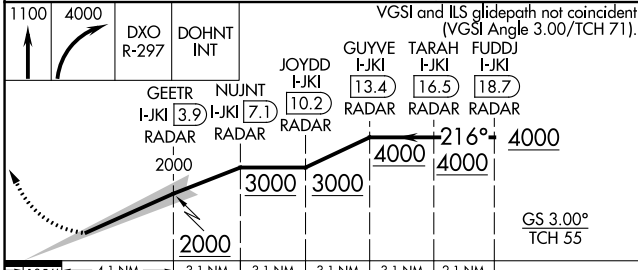
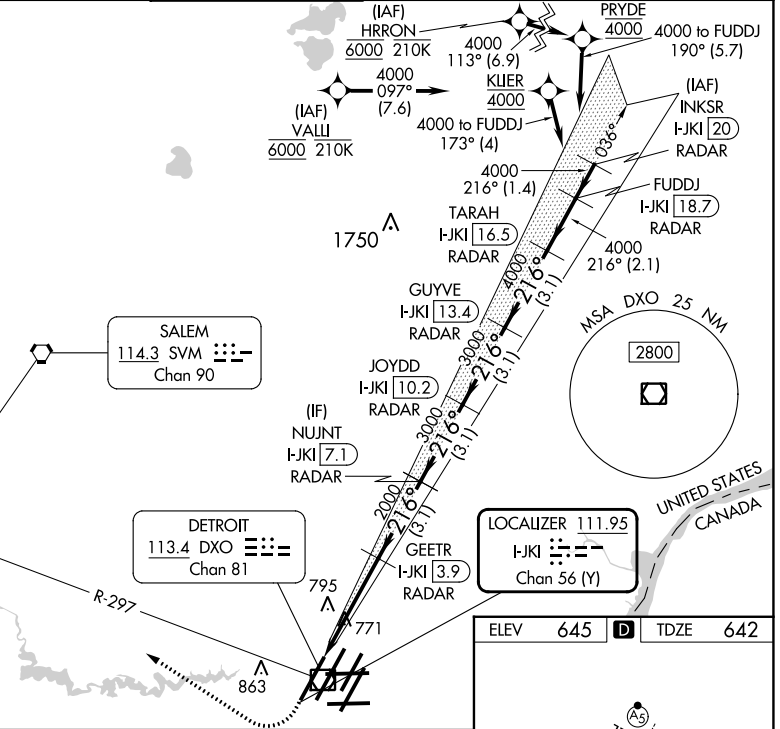
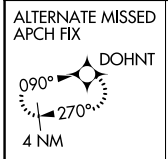
RNAV 1-GPS, HRRON and VALLI: RNAV 1-DME/DME/IRU or GPS required.
 Aircraft not DME/DME/IRU or GPS equipped - RADAR required for procedure entry.

Simultaneous approach authorized. SA CAT I: Requires specific OPSPEC, MSPEC, or LOA approval and use of HUD to DH. SA CAT II: Reduced lighting; Requires specific OPSPEC, MSPEC, or LOA approval and use of autoland or HUD to touchdown.

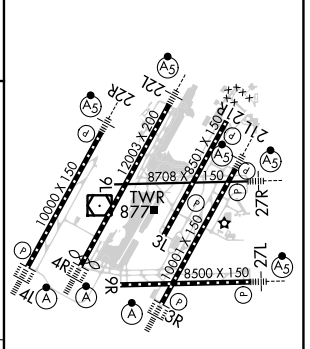
MALSR

MISSED APPROACH: Climb to 1100 then climbing right turn to 4000 on DXO VOR/DME R-297 to DOHNT INT/DXO 15.5 DME and hold.

D-ATIS 133.675	DETROIT APP CON 124.05 284.0	METRO TOWER 135.0 317.725	GND CON 121.8 (NW) 119.45 (NE) 132.725 (SW) 119.25 (SE)	CLNC DEL 120.65	CPDLC
--------------------------	--	-------------------------------------	---	---------------------------	-------



ELEV 645	D	TDZE 642
-----------------	----------	-----------------



CATEGORY	A	B	C	D
S-ILS 22R	SA CAT I	RA 148/14	150 DA 792	
S-ILS 22R	SA CAT II	RA 98/12	100 DA 742	

SA CATEGORY I & II ILS - SPECIAL AIRCREW & AIRCRAFT CERTIFICATION REQUIRED

TDZ/CL Rwy's 3R, 4L, 4R and 22R
 REL Rwy's 3L, 9L, 9R and 21R
 HIRL all Rwy's

EC-1, 26 DEC 2024 to 23 JAN 2025

EC-1, 26 DEC 2024 to 23 JAN 2025