

LOC/DME I-JKI 111.95	APP CRS 216°	Rwy Idg TDZE 642 Apt Elev 645
Chan 56 (Y)		

ILS Z or LOC RWY 22R

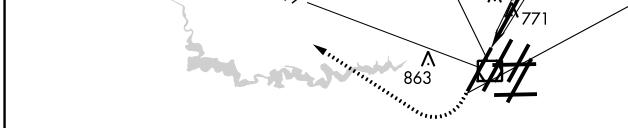
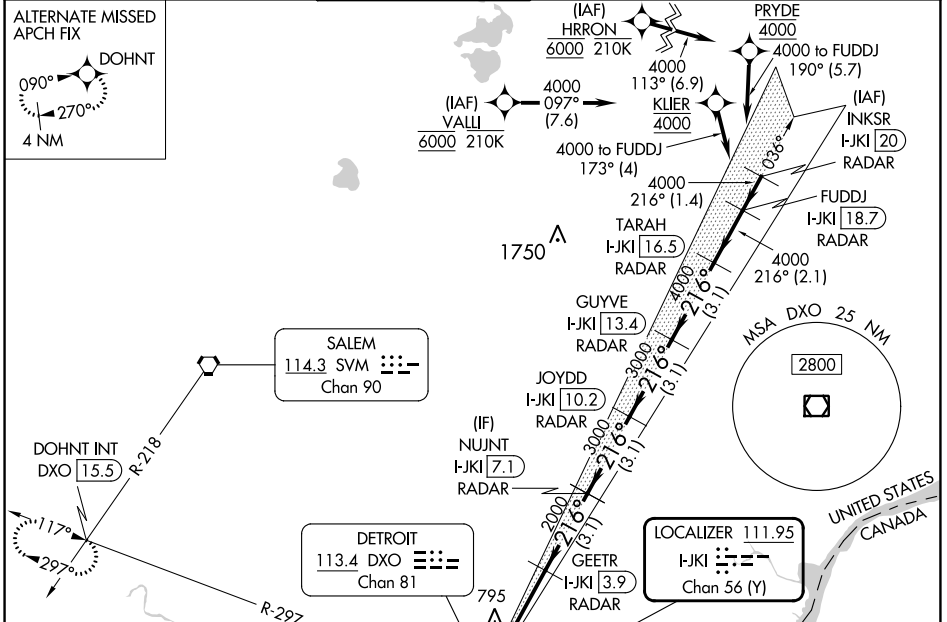
DETROIT METRO WAYNE COUNTY (DTW)

RNAV 1-GPS. HRRON and VALLI: RNAV 1-DME/DME/IRU or GPS required.
Aircraft not DME/DME/IRU or GPS equipped - RADAR required for procedure entry.

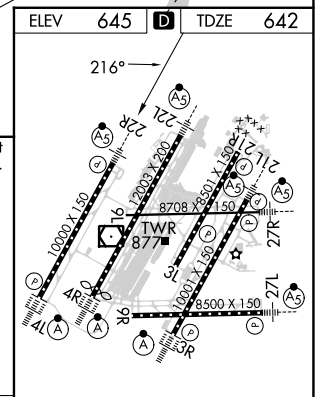
MALSR MISSED APPROACH: Climb to 1100 then climbing right turn to 4000 on DXO VOR/DME R-297 to DOHNT INT/DXO 15.5 DME and hold.

Simultaneous approach authorized.
**RVR 1800 authorized with use of FD or AP or HUD to DA.

D-ATIS 133.675	DETROIT APP CON 124.05 284.0	METRO TOWER 135.0 317.725	GND CON 121.8 (NW) 119.45 (NE) 132.75 (SW) 119.25 (SE)	CLNC DEL 120.65	CPDLC
--------------------------	--	-------------------------------------	--	---------------------------	-------



1100	4000	DXO R-297	DOHNT INT	VGS1 and ILS glidepath not coincident (VGS1 Angle 3.00/TCH 71).			
*LOC only.		GEETR I-JKI 3.9	NUJNT I-JKI 7.1	JOYDD I-JKI 10.2	GUYVE I-JKI 13.4	TARAH I-JKI 16.5	FUDDJ I-JKI 18.7
I-JKI DME ANTENNA I-JKI 0.2		RADAR		RADAR	RADAR	RADAR	RADAR
2000		3000		3000	216° 4000		4000
GS 3.00° TCH 55							
11056	1.1 NM	3 NM	3.1 NM	3.1 NM	3.1 NM	3.1 NM	2.1 NM



CATEGORY	A	B	C	D
S-ILS 22R**	842/24		200 (200-1/2)	
S-LOC 22R	1060/24	418 (500-1/2)	1060/40	418 (500-3/4)
☐ CIRCLING	1180-1	535 (600-1)	1180-1 1/2	1240-2
			535 (600-1 1/2)	595 (600-2)
	FAF to MAP 4.1 NM			
	Knots	60	90	120 150 180
	Min:Sec	4:06	2:44	2:03 1:38 1:22

EC-1, 26 DEC 2024 to 23 JAN 2025

EC-1, 26 DEC 2024 to 23 JAN 2025