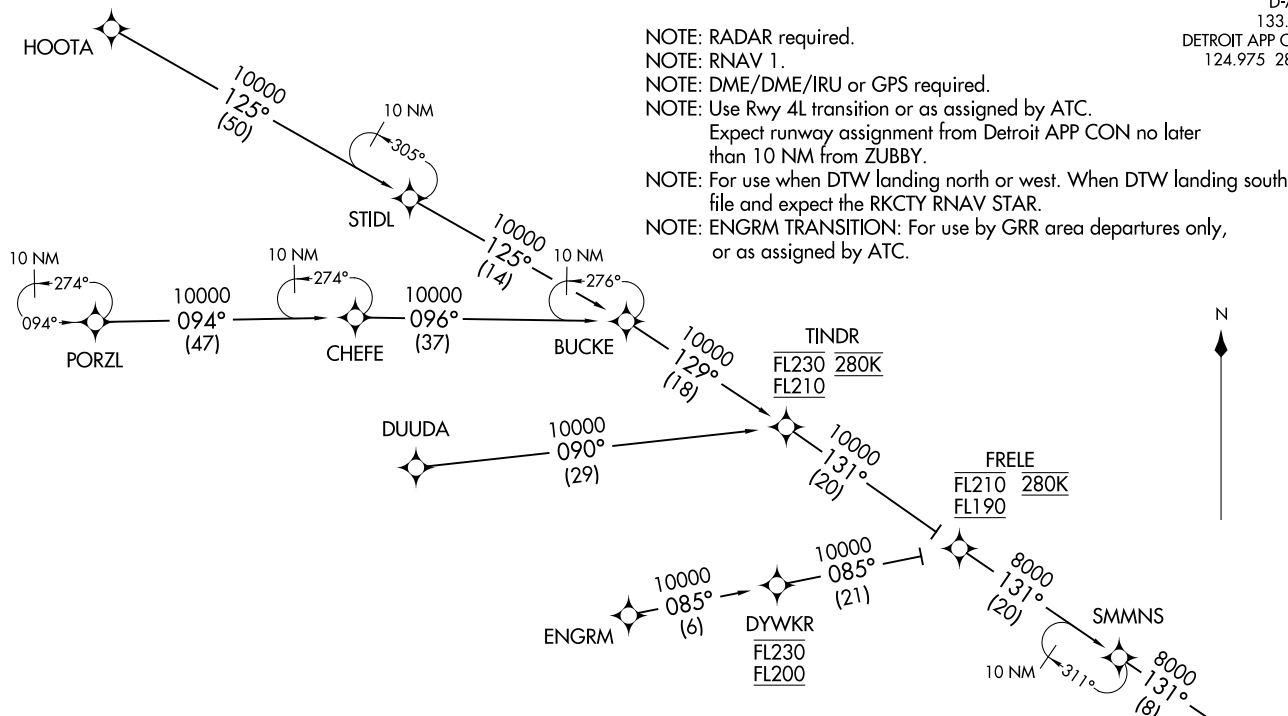


D-ATIS
133.675
DETROIT APP CON
124.975 284.0

- NOTE: RADAR required.
- NOTE: RNAV 1.
- NOTE: DME/DME/IRU or GPS required.
- NOTE: Use Rwy 4L transition or as assigned by ATC.
Expect runway assignment from Detroit APP CON no later than 10 NM from ZUBBY.
- NOTE: For use when DTW landing north or west. When DTW landing south, file and expect the RKCTY RNAV STAR.
- NOTE: ENGRM TRANSITION: For use by GRR area departures only, or as assigned by ATC.



DUUDA TRANSITION (DUUDA.KKISS2)
ENGRM TRANSITION (ENGRM.KKISS2)
HOOTA TRANSITION (HOOTA.KKISS2)
PORZL TRANSITION (PORZL.KKISS2)

(NARRATIVE ON FOLLOWING PAGE)
 (CONTINUED ON FOLLOWING PAGE)

RKCTY
FL210 280K
16000
 See following page for arrival route

NOTE: Chart not to scale.

KISS TWO ARRIVAL (RNAV) Transition Routes
 (RKCTY.KKISS2) 100CT19
 DETROIT, MICHIGAN
 DETROIT METRO WAYNE COUNTY (DTW)

(RKCTY.KKISS2) 21112
 KISS TWO ARRIVAL (RNAV) Transition Routes
 AL119 (FAA)
 DETROIT, MICHIGAN
 DETROIT METRO WAYNE COUNTY (DTW)

KKISS TWO ARRIVAL (RNAV) Arrival Route
 (RKCTY, KKISS2) 100CT19

DETROIT, MICHIGAN
 DETROIT METRO WAYNE COUNTY (DTW)

KKISS TWO ARRIVAL (RNAV) Arrival Route
 (RKCTY, KKISS2) 21112

DETROIT METRO WAYNE COUNTY (DTW)
 AL-119 (FAA) DETROIT, MICHIGAN

D-ATIS
 133.675
 DETROIT APP CON
 124.975 284.0

- NOTE: RADAR required.
- NOTE: RNAV 1.
- NOTE: DME/DME/IRU or GPS required.
- NOTE: Use Rwy 4L transition or as assigned by ATC.
 Expect runway assignment from Detroit APP CON no later than 10 NM from ZUBBY.
- NOTE: For use when DTW landing north or west. When DTW landing south, file and expect the RKCTY RNAV STAR.
- NOTE: ENGRM TRANSITION: For use by GRR area departures only, or as assigned by ATC.

ARRIVAL ROUTE DESCRIPTION

From RKCTY on track 141° to cross KKISS between 12000 and 15000, then on track 140° to cross STLEY between 10000 and 11000 and at 250K, then on track 140° to ZUBBY.

LANDING RWY 3L/R: From ZUBBY on track 144° to QWYNN, then on track 214° to cross ROYYY at 8000 and at 210K, then on track 216°. Expect RADAR vectors to final approach course.

LANDING RWY 4L/R: From ZUBBY on track 216° to cross SKRUG at 8000 and at 210K, then on track 218°. Expect RADAR vectors to final approach course.

LANDING RWY 27L/R: From ZUBBY on track 112° to cross TMTOM at 8000 and at 210K, then on track 096° to cross TUUBR at 8000, then on track 096°.

