

(MIGGY3.MIGGY) 24137

DETROIT METRO WAYNE COUNTY (DTW)

MIGGY THREE DEPARTURE (RNAV)

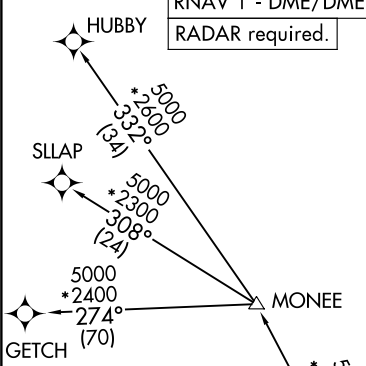
AL-119 (FAA)

DETROIT, MICHIGAN

RNAV 1 - DME/DME/IRU or GPS.  
RADAR required.

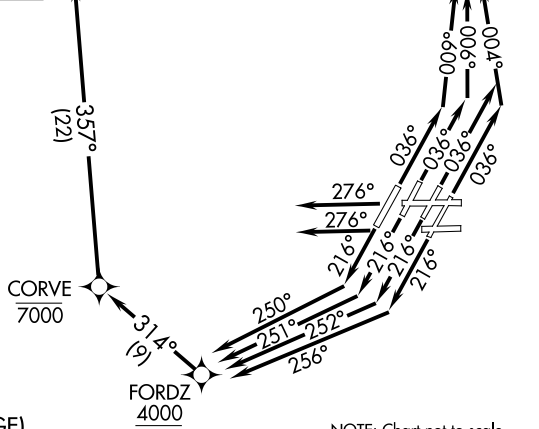
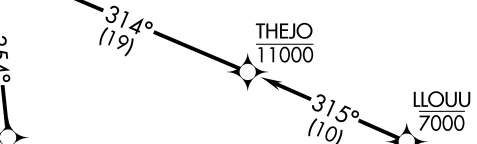
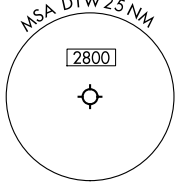
**TOP ALTITUDE:  
17000**

D-ATIS 118.125  
CLNC DEL 120.65  
CPDLC  
GND CON  
121.8 (NW) 119.45 (NE)  
132.725 (SW) 119.25 (SE)  
METRO TOWER  
118.4 317.725 (Rwys 3L/R, 21L/R, 27R)  
128.75 317.725 (Rwy 27L)  
135.0 317.725 (Rwys 4L/R, 22L/R)  
DETROIT DEP CON  
125.525 284.0



NOTE: Jet departures at/above 10000, maintain 280K until advised by ATC.  
NOTE: GETCH TRANSITION: For use by KMKE area arrivals only, or as assigned by ATC.

TAKEOFF MINIMUMS:  
Rwys 27L/R: Standard.  
Rwys 3L/R, 4L/R, 21L/R, 22L/R: Standard with minimum climb of 500' per NM to 1146.



(CONTINUED ON FOLLOWING PAGE)

NOTE: Chart not to scale.

EC-1, 26 DEC 2024 to 23 JAN 2025

EC-1, 26 DEC 2024 to 23 JAN 2025

MIGGY THREE DEPARTURE (RNAV)

DETROIT, MICHIGAN

(MIGGY3.MIGGY) 16MAY24

DETROIT METRO WAYNE COUNTY (DTW)



DEPARTURE ROUTE DESCRIPTION

SEE ADDITIONAL REQUIREMENTS IN RNAV DEPARTURE AAUP.

TAKEOFF RUNWAYS 3L/R: Climb on heading 036° to intercept course 004° to cross LLOUU at or below 7000, then on track 315° to cross THEJO at or below 11000, then on track 314° to JAXII, thence....

TAKEOFF RUNWAY 4L: Climb on heading 036° to intercept course 009° to cross LLOUU at or below 7000, then on track 315° to cross THEJO at or below 11000, then on track 314° to JAXII, thence....

TAKEOFF RUNWAY 4R: Climb on heading 036° to intercept course 006° to cross LLOUU at or below 7000, then on track 315° to cross THEJO at or below 11000, then on track 314° to JAXII, thence....

TAKEOFF RUNWAY 21L: Climb on heading 216° to intercept course 256° to cross FORDZ at or above 4000, then on track 314° to cross CORVE at or below 7000, then on track 357° to cross VESSA at or above 15000, then on track 354° to JAXII, thence....

TAKEOFF RUNWAY 21R: Climb on heading 216° to intercept course 252° to cross FORDZ at or above 4000, then on track 314° to cross CORVE at or below 7000, then on track 357° to cross VESSA at or above 15000, then on track 354° to JAXII, thence....

TAKEOFF RUNWAY 22L: Climb on heading 216° to intercept course 251° to cross FORDZ at or above 4000, then on track 314° to cross CORVE at or below 7000, then on track 357° to cross VESSA at or above 15000, then on track 354° to JAXII, thence....

TAKEOFF RUNWAY 22R: Climb on heading 216° to intercept course 250° to cross FORDZ at or above 4000, then on track 314° to cross CORVE at or below 7000, then on track 357° to cross VESSA at or above 15000, then on track 354° to JAXII, thence....

TAKEOFF RUNWAY 27L/R: Climb on heading 276° or as assigned by ATC, for RADAR vectors to JAXII, thence....

....on track 323° to MIGGY, then on (transition). Maintain 17000 or as assigned by ATC, expect filed altitude 10 minutes after departure.

- GETCH TRANSITION (MIGGY3.GETCH):
- HUBBY TRANSITION (MIGGY3.HUBBY):
- SLLAP TRANSITION (MIGGY3.SLLAP):

EC-1, 26 DEC 2024 to 23 JAN 2025

EC-1, 26 DEC 2024 to 23 JAN 2025