

DETROIT, MICHIGAN

AL-119 (FAA)

RNAV (GPS) PRM Z RWY 22L (CLOSE PARALLEL)

DETROIT METRO WAYNE COUNTY (DTW)

| | | | |
|--|------------------------|-----------------------------|--|
| WAAS CH 99601 W22A | APP CRS 216° | Rwy Idg TDZE Apt Elev | 12003 637 645 |
|--|------------------------|-----------------------------|--|

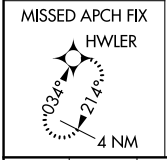
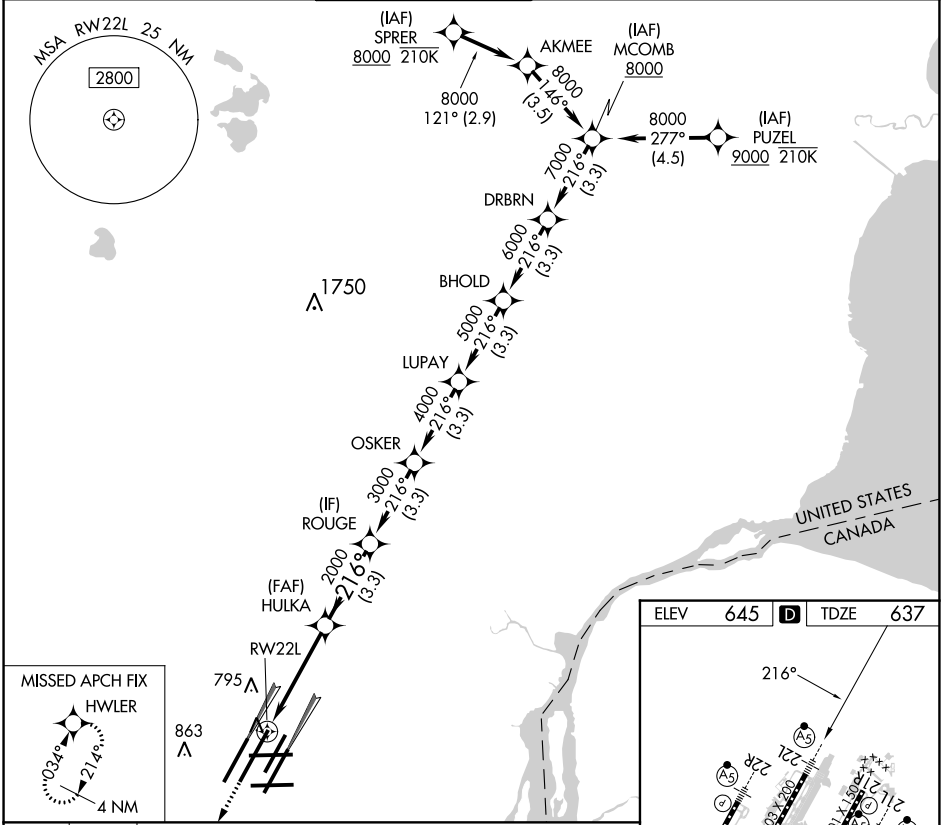
RNP APCH.

▼ For uncompensated Baro-VNAV systems, LNAV/VNAV NA below -10°C or above 54°C. Simultaneous approach authorized. Use of FD or AP required during simultaneous operations. Dual VHF comm required. See additional requirements on AAUP. For inop ALS, increase LNAV/VNAV all Cats visibility to RVR 4500. * RVR 1800 authorized with use of FD or AP or HUD to DA.

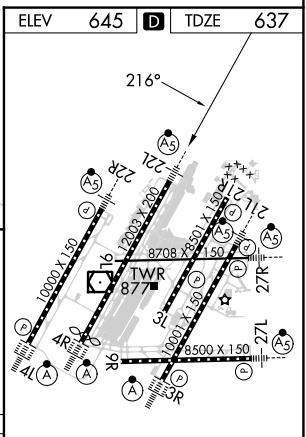


MISSED APPROACH:
Climb to 4000 direct
HWLER and hold.

| | | | | | |
|--------------------------|--|---|---|---------------------------|-------|
| D-ATIS 133.675 | DETROIT APP CON 124.05 284.0 | METRO TOWER 128.125 317.725 PRM 135.775 | GND CON 121.8 (NW) 119.45 (NE) 132.725 (SW) 119.25 (SE) | CLNC DEL 120.65 | CPDLC |
|--------------------------|--|---|---|---------------------------|-------|



| | | | | |
|------------|--------|--------|--------|--------|
| 4000 HWLER | DRBRN | MCOMB | 216° | 8000 |
| HULKA | ROUGE | OSKER | LUPAY | BHOLD |
| 2000 | 3000 | 4000 | 5000 | 6000 |
| RW22L | 2000 | 3000 | 4000 | 5000 |
| 4.3 NM | 3.3 NM | 3.3 NM | 3.3 NM | 3.3 NM |



| | | | | |
|--------------|---|--------|-------------|---|
| CATEGORY | A | B | C | D |
| LPV DA * | | 837/24 | 200 (200-½) | |
| LNAV/VNAV DA | | 938/24 | 301 (300-½) | |

TDZ/CL Rws 3R, 4L, 4R, and 22R
REIL Rws 3L, 9L, 9R, and 21R
HIRL all runways

DETROIT, MICHIGAN
Amdt 1A 28FEB19

42°13'N-83°21'W
RNAV (GPS) PRM Z RWY 22L (CLOSE PARALLEL)

DETROIT METRO WAYNE COUNTY (DTW)

EC-1, 26 DEC 2024 to 23 JAN 2025

EC-1, 26 DEC 2024 to 23 JAN 2025