

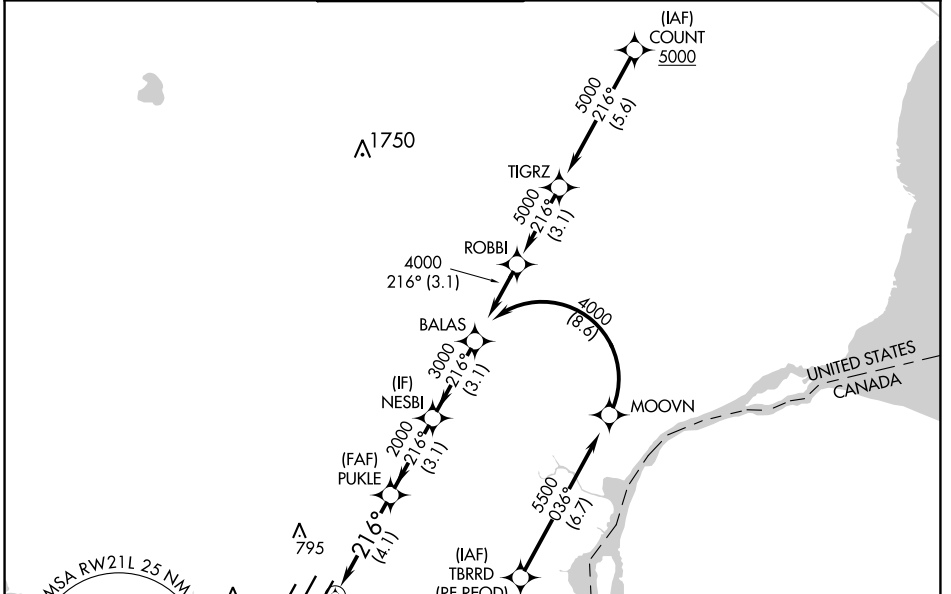
APP CRS	Rwy Idg	10001
216°	TDZE	632
	Apt Elev	645

RNAV (RNP) W RWY 21L

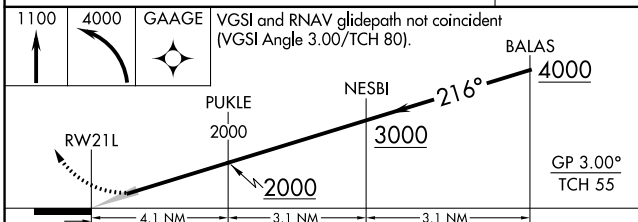
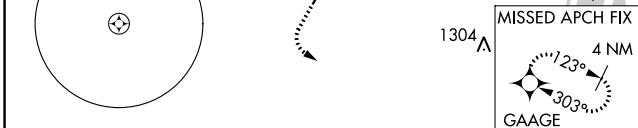
DETROIT METRO WAYNE COUNTY (DTW)

RNP AR APCH.		MALSR	MISSED APPROACH: Climb to 1100 then climbing left turn to 4000 direct GAAGE and hold.
<p>▼ For uncompensated Baro-VNAV systems, procedure NA below -19°C or above 54°C. Simultaneous approach authorized. Use of FD or AP providing RNAV track guidance required during simultaneous operations.</p>			

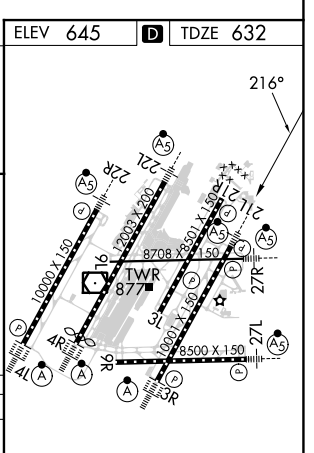
D-ATIS	DETROIT APP CON	METRO TOWER	GND CON	CLNC DEL	CPDLC
133.675	125.15 284.0	118.4 317.725	121.8 (NW) 119.45 (NE) 132.725 (SW) 119.25 (SE)	120.65	



ELEV 645	D	TDZE 632
----------	----------	----------



CATEGORY	A	B	C	D
RNP 0.30 DA		1062/40	430 (500-¾)	



AUTHORIZATION REQUIRED

HIRL all runways
REIL Rwy's 3L, 9L, 9R and 21R
TDZ/CL Rwy's 3R, 4L, 4R and 22R

EC-1, 26 DEC 2024 to 23 JAN 2025

EC-1, 26 DEC 2024 to 23 JAN 2025