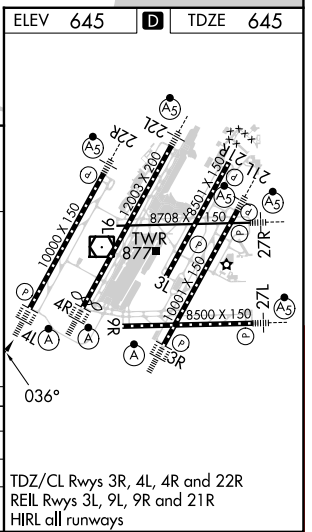
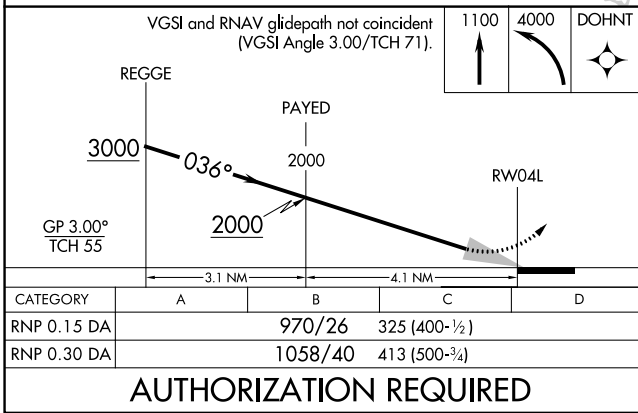
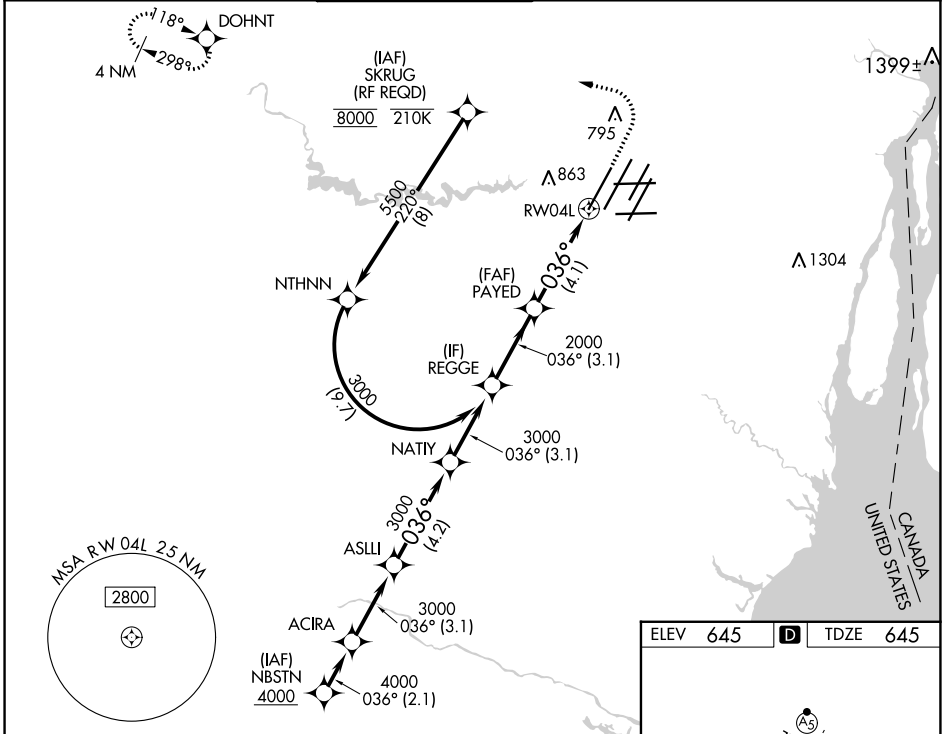


APP CRS 036°	Rwy Idg 10000
	TDZE 645
	Apt Elev 645

RNAV (RNP) W RWY 4L

DETROIT METRO WAYNE COUNTY (DTW)

RNP AR APCH.		ALSF-2	MISSED APPROACH: Climb to 1100 then climbing left turn to 4000 direct DOHNT and hold, continue climb-in-hold to 4000.		
<p>Simultaneous approach authorized. For uncompensated Baro-VNAV systems, procedure NA below -19°C or above 54°C. For inop ALS, increase RNP 0.30 all Cats visibility to RVR 6000.</p>					
D-ATIS 133.675	DETROIT APP CON 124.05 284.0	METRO TOWER 135.0 317.725	GND CON 121.8 (NW) 119.45 (NE) 132.725 (SW) 119.25 (SE)	CLNC DEL 120.65	CPDLC



AUTHORIZATION REQUIRED

EC-1, 26 DEC 2024 to 23 JAN 2025

EC-1, 26 DEC 2024 to 23 JAN 2025