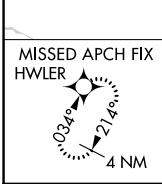
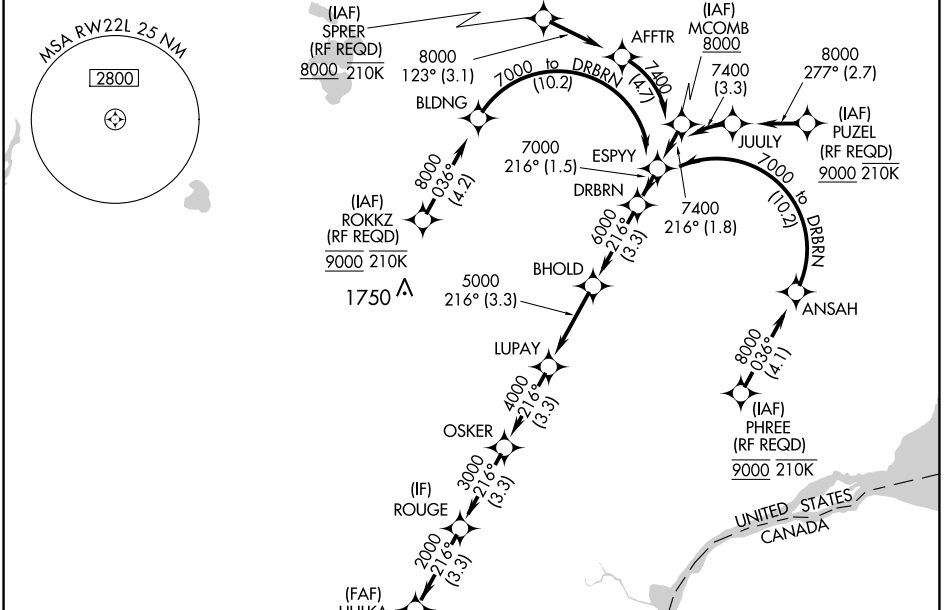


APP CRS	Rwy Idg	12003
216°	TDZE	637
	Apt Elev	645

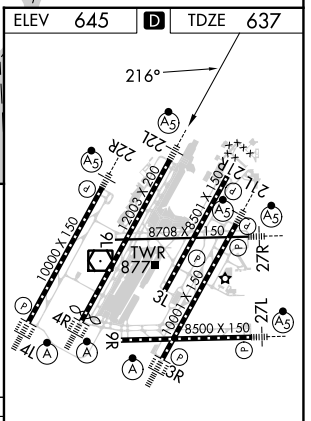
RNAV (RNP) X RWY 22L

DETROIT METRO WAYNE COUNTY (DTW)

RNP AR APCH.		METRO TOWER 128.125 317.725		GND CON 121.8 (NW) 119.45 (NE) 132.725 (SW) 119.25 (SE)		MALS R	MISSED APPROACH: Climb to 4000 direct HWLER and hold.
▼ For uncompensated Baro-VNAV systems, procedure NA below -10°C (14°F) or above 54°C (130°F). Simultaneous approach authorized. For inop ALS, increase RNP 0.15 all Cats visibility to RVR 4500 and RNP 0.30 all Cats visibility to RVR 6000.		D-ATIS 133.675		DETROIT APP CON 124.05 284.0		CLNC DEL 120.65	CPDLC



4000	↑	HWLER	DRBRN
			7000
			6000
			5000
			4000
			3000
			2000
			RW22L
	4.3 NM	3.3 NM	3.3 NM
			GP 2.85° TCH 60



CATEGORY	A	B	C	D
RNP 0.15 DA	941/24		304 (300-1/2)	
RNP 0.30 DA	1040/40		403 (400-3/4)	

AUTHORIZATION REQUIRED

TDZ/CL Rws 3R, 4L, 4R and 22R
REIL Rws 3L, 9L, 9R and 21R
HIRL all runways

EC-1, 26 DEC 2024 to 23 JAN 2025

EC-1, 26 DEC 2024 to 23 JAN 2025