

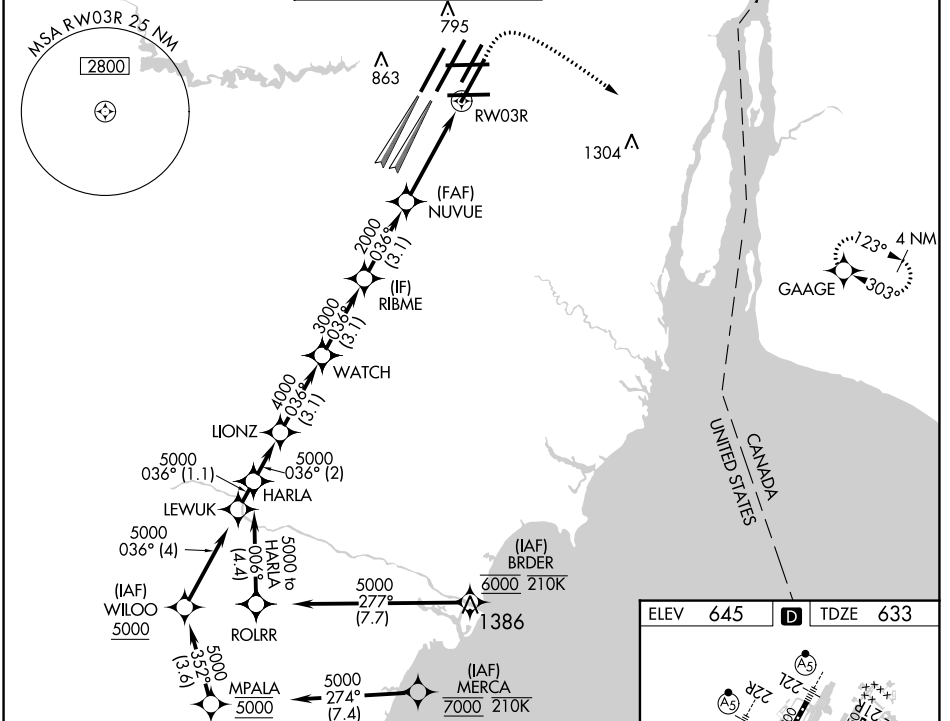
WAAS CH <b>61304</b> <b>W03A</b>	APP CRS <b>036°</b>	Rwy Idg <b>10001</b> TDZE <b>633</b> Apt Elev <b>645</b>
--	------------------------	--

# RNAV (GPS) Z RWY 3R

DETROIT METRO WAYNE COUNTY (DTW)

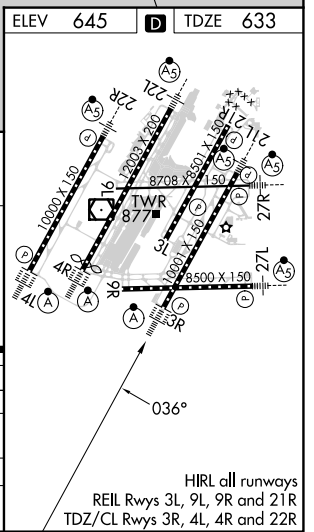
RNP APCH. ▼ For uncompensated Baro-VNAV systems, LNAV/VNAV NA below -19°C (-2°F) or above 54°C (130°F). Simultaneous approach authorized. LNAV procedure NA during simultaneous operations. Use of FD or AP required during simultaneous operations.	ALSF-2 	MISSED APPROACH: Climb to 1100 then climbing right turn to 4000 direct GAAGE and hold, continue climb-in-hold to 4000.
---	------------	--

D-ATIS <b>133.675</b>	DETROIT APP CON <b>125.15 284.0</b>	METRO TOWER <b>118.4 317.725</b>	GND CON <b>121.8</b> (NW) <b>119.45</b> (NE) <b>132.725</b> (SW) <b>119.25</b> (SE)	CLNC DEL <b>120.65</b>	CPDLC
--------------------------	--	-------------------------------------	---	---------------------------	-------



VGSI and RNAV glidepath not coincident (VGSI Angle 3.00/TCH 70).

	HARLA	LIONZ	WATCH	RIBME	NUVUE	GAAGE
	5000	5000	4000	3000	2000	1100
GP 3.00° TCH 54	036°					
	2 NM	3.1 NM	3.1 NM	3.1 NM	2.9 NM	1.2
CATEGORY	A		B	C	D	
LPV DA	833/18		200 (200-½)			
LNAV/VNAV DA	1013/35		380 (400-¾)			
LNAV MDA	1080/24	447 (500-½)	1080/45	447 (500-¾)		
CIRCLING	1180-1	535 (600-1)	1180-1½	1240-2		
			535 (600-1½)	595 (600-2)		



EC-1, 26 DEC 2024 to 23 JAN 2025

EC-1, 26 DEC 2024 to 23 JAN 2025

HIRL all runways  
REIL Rwy 3L, 9L, 9R and 21R  
TDZ/CL Rwy 3R, 4L, 4R and 22R