

(ZETTR4.ZETTR) 24137

AL-119 (FAA)

DETROIT METRO WAYNE COUNTY (DTW)

ZETTR FOUR DEPARTURE (RNAV) Departure Routes

DETROIT, MICHIGAN

DETROIT DEP CON

125.525 284.0 (Rwys 22L/R, 27L/R)
 132.025 284.0 (Rwys 3L/R, 4L/R, 21L/R)
 D-ATIS 118.125
 CLNC DEL 120.65
 CPDLC
 GND CON
 121.8 (NW) 119.45 (NE)
 132.725 (SW) 119.25 (SE)
 METRO TOWER
 118.4 317.725 (Rwys 3L/R, 21L/R, 27R)
 128.75 317.725 (Rwy 27L)
 135.0 317.725 (Rwys 4L/R, 22L/R)

RNAV 1 - DME/DME/IRU or GPS.

RADAR required.

TOP ALTITUDE:

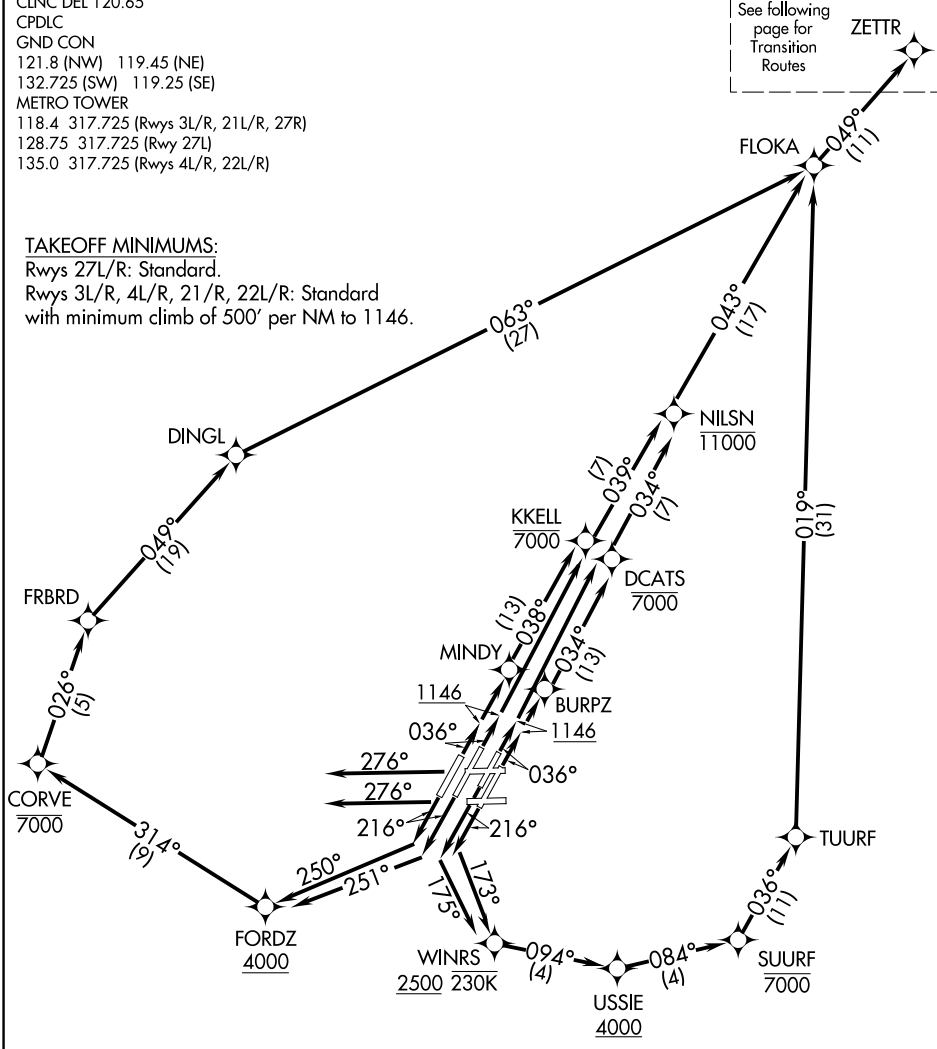
17000

See following
 page for
 Transition
 Routes

ZETTR

TAKEOFF MINIMUMS:

Rwys 27L/R: Standard.
 Rwys 3L/R, 4L/R, 21/R, 22L/R: Standard
 with minimum climb of 500' per NM to 1146.



NOTE: Turbojet departures at/above 10000,
 maintain 280K until advised by ATC.
 NOTE: TANKO TRANSITION: For use by CYYZ
 area arrivals only, or as assigned by ATC.

NOTE: Chart not to scale.

(CONTINUED ON FOLLOWING PAGE)

ZETTR FOUR DEPARTURE (RNAV) Departure Routes

DETROIT, MICHIGAN

(ZETTR4.ZETTR) 16MAY24

DETROIT METRO WAYNE COUNTY (DTW)

EC-1, 26 DEC 2024 to 23 JAN 2025

EC-1, 26 DEC 2024 to 23 JAN 2025

(ZETTR4.ZETTR) 24137

AL-119 (FAA)

DETROIT METRO WAYNE COUNTY (DTW)

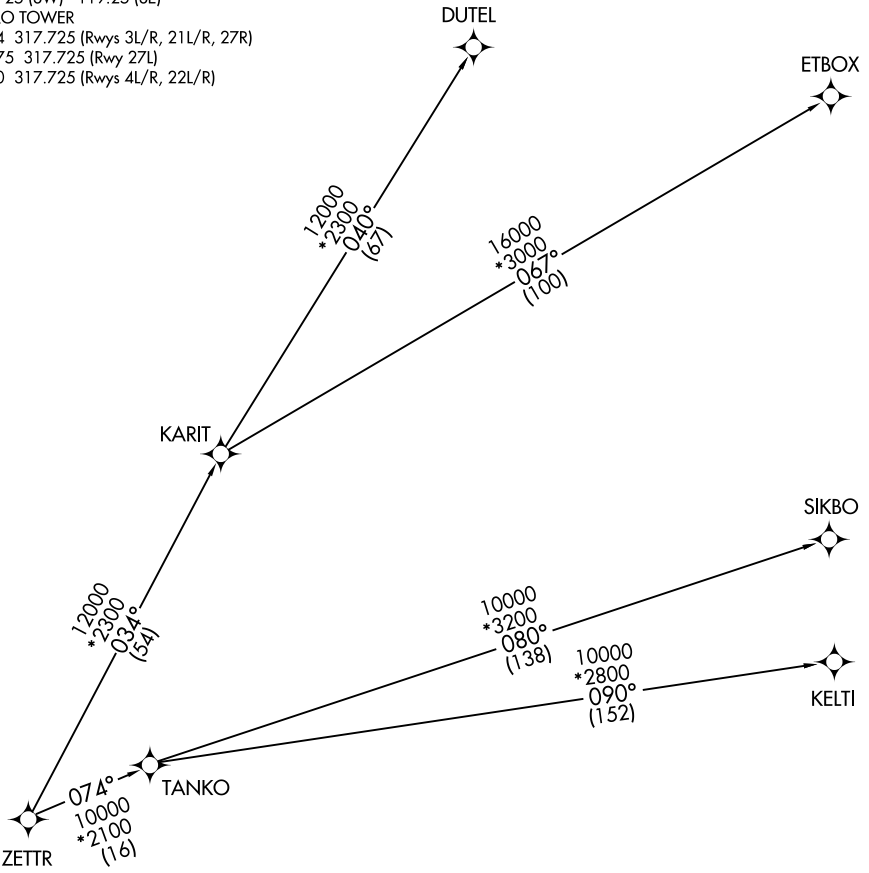
ZETTR FOUR DEPARTURE (RNAV) Transition Routes

DETROIT, MICHIGAN

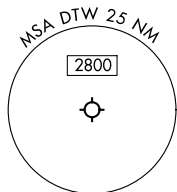
DETROIT DEP CON
 125.525 284.0 (Rwys 22L/R, 27L/R)
 132.025 284.0 (Rwys 3L/R, 4L/R, 21L/R)
 D-ATIS 118.125
 CLNC DEL 120.65
 CPDLC
 GND CON
 121.8 (NW) 119.45 (NE)
 132.725 (SW) 119.25 (SE)
 METRO TOWER
 118.4 317.725 (Rwys 3L/R, 21L/R, 27R)
 128.75 317.725 (Rwy 27L)
 135.0 317.725 (Rwys 4L/R, 22L/R)

RNAV 1 - DME/DME/IRU or GPS.
 RADAR required.

**TOP ALTITUDE:
17000**



NOTE: Turbojet departures at/at above 10000, maintain 280K until advised by ATC.
 NOTE: TANKO Transition: For use by CYYZ area arrivals only, or as assigned by ATC.



NOTE: Chart not to scale.

(CONTINUED ON FOLLOWING PAGE)

ZETTR FOUR DEPARTURE (RNAV) Transition Routes

DETROIT, MICHIGAN

(ZETTR4.ZETTR) 16MAY24

DETROIT METRO WAYNE COUNTY (DTW)

EC-1, 26 DEC 2024 to 23 JAN 2025

EC-1, 26 DEC 2024 to 23 JAN 2025



DEPARTURE ROUTE DESCRIPTION

SEE ADDITIONAL REQUIREMENTS IN RNAV DEPARTURE AAPP.

TAKEOFF RUNWAY 3L: Climb on heading 036° to 1146, then direct to cross DCATS at or below 7000, then on track 034° to cross NILSN at or below 11000, then on track 043° to FLOKA, thence....

TAKEOFF RUNWAY 3R: Climb on heading 036° to 1146, then direct BURPZ, then on track 034° to cross DCATS at or below 7000, then on track 034° to cross NILSN at or below 11000, then on track 043° to FLOKA, thence....

TAKEOFF RUNWAY 4L: Climb on heading 036° to 1146, then direct MINDY, then on track 038° to cross KKELL at or below 7000, then on track 039° to cross NILSN at or below 11000, then on track 043° to FLOKA, thence....

TAKEOFF RUNWAY 4R: Climb on heading 036° to 1146, then direct to cross KKELL at or below 7000, then on track 039° to cross NILSN at or below 11000, then on track 043° to FLOKA, thence....

TAKEOFF RUNWAY 21L: Climb on heading 216° to intercept course 173° to cross WINRS at or above 2500 and at or below 230K, then on track 094° to cross USSIE at or above 4000, then on track 084° to cross SUURF at or below 7000, then on track 036° to TUURF, then on track 019° to FLOKA, thence....

TAKEOFF RUNWAY 21R: Climb on heading 216° to intercept course 175° to cross WINRS, at or above 2500 and at or below 230K, then on track 094° to cross USSIE at or above 4000, then on track 084° to cross SUURF at or below 7000, then on track 036° to TUURF, then on track 019° to FLOKA, thence....

TAKEOFF RUNWAY 22L: Climb on heading 216° to intercept course 251° to cross FORDZ at or above 4000, then on track 314° to cross CORVE at or below 7000, then on track 026° to FRBRD, then on track 049° to DINGL, then on track 063° to FLOKA, thence....

TAKEOFF RUNWAY 22R: Climb on heading 216° to intercept course 250° to cross FORDZ at or above 4000, then on track 314° to cross CORVE at or below 7000, then on track 026° to FRBRD, then on track 049° to DINGL, then on track 063° to FLOKA, thence....

TAKEOFF RUNWAYS 27L/R: Climb on heading 276° or as assigned by ATC, for RADAR vectors to FLOKA, thence....

....on track 049° to ZETTR, then on (transition). Maintain 17000, expect filed altitude 10 minutes after departure.

DUTEL TRANSITION (ZETTR4.DUTEL):

ETBOX TRANSITION (ZETTR4.ETBOX):

KELTI TRANSITION (ZETTR4.KELTI):

SIKBO TRANSITION (ZETTR4.SIKBO):

TANKO TRANSITION (ZETTR4.TANKO):

EC-1, 26 DEC 2024 to 23 JAN 2025

EC-1, 26 DEC 2024 to 23 JAN 2025