

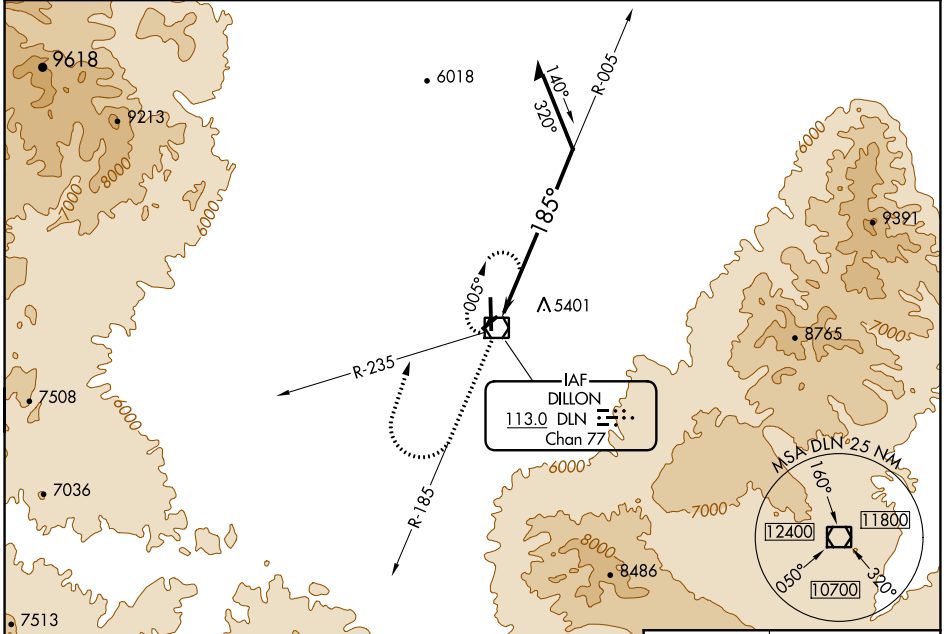
VOR/DME DLN 113.0 Chan 77	APP CRS 185°	Rwy Idg TDZE Apt Elev N/A N/A 5245
--	------------------------	--

VOR-A DILLON (DLN)

⚠ When local altimeter setting not received, procedure NA. Night Landing: Rwy 4, 22, 35 NA. Helicopter visibility reduction below 1 SM not authorized.

MISSED APPROACH: Climb to 9000 on DLN VOR/DME R-185 then climbing right turn to 9600 on heading 360° and DLN VOR/DME R-235 to DLN VOR/DME and hold.

ASOS 135.225	SALT LAKE CENTER 132.4 338.3	UNICOM 122.8 (CTAF) 0
------------------------	--	---------------------------------

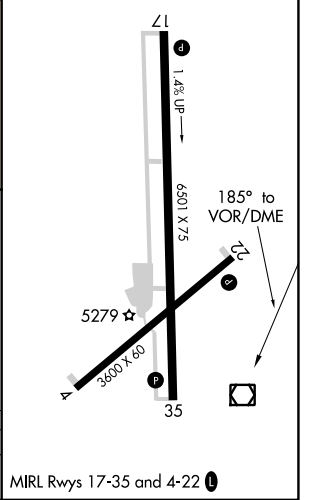
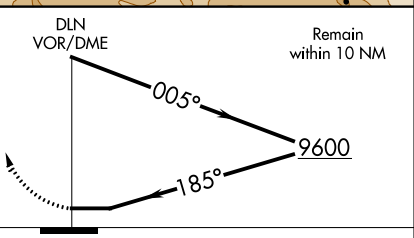


NW-1, 26 DEC 2024 to 23 JAN 2025

NW-1, 26 DEC 2024 to 23 JAN 2025

ELEV 5245

9000 DLN R-185	9600 hdg 360°	DLN R-235	DLN
----------------------	---------------------	--------------	-----



CATEGORY	A	B	C	D
C CIRCLING	8100-1¼ 2855 (2900-1¼)	8100-1½ 2855 (2900-1½)	8100-3	2855 (2900-3)

MIRL Rwy 17-35 and 4-22 0