

LOC I-DLH 110.3	APP CRS 093°	Rwy Idg 10062 TDZE 1428 Apt Elev 1428
---------------------------	------------------------	--

ILS or LOC RWY 9

DULUTH INTL (DLH)

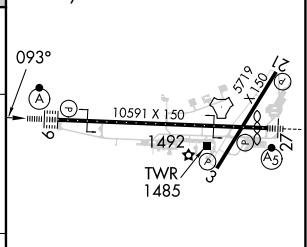
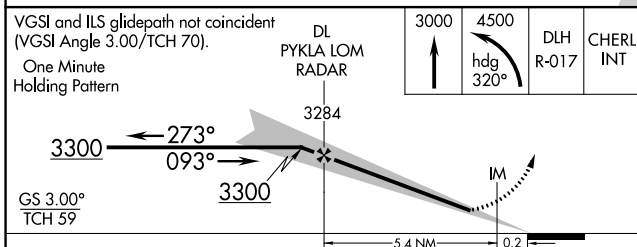
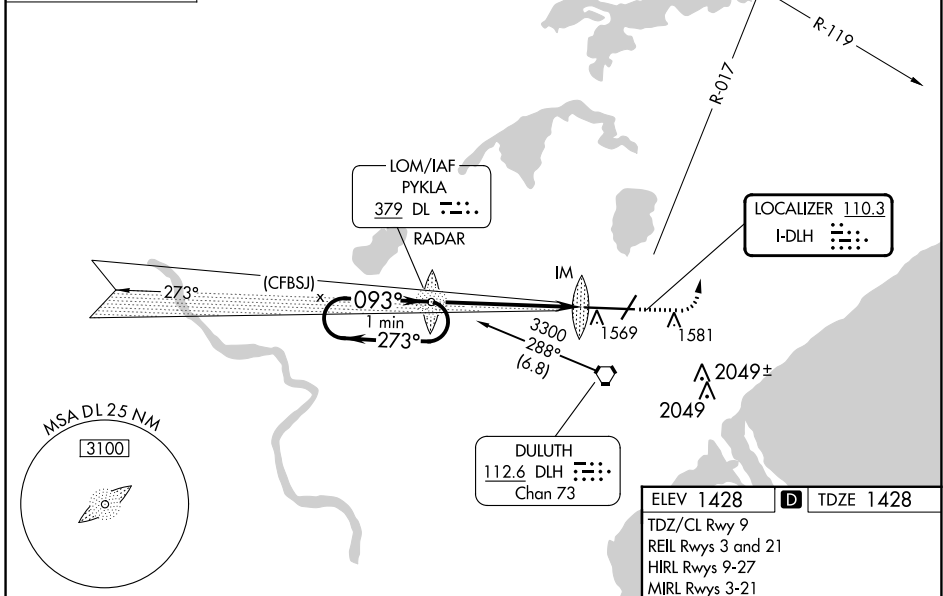
<p>Circling NA for Cat E southeast of Rwy 3-27. ADF or RADAR required. For inop ALS, increase S-ILS 9 Cat E visibility to RVR 4000 and S-LOC 9 Cat C/D/E visibility to 1½ SM.</p>	ALSF-2 	MISSED APPROACH: Climb to 3000 then climbing left turn to 4500 on heading 320° and on DLH VORTAC R-017 to CHERL INT/DLH 15 DME and hold.
	<p>ASR</p>	

ATIS 124.1 270.1	DULUTH APP CON 125.45 233.7	DULUTH TOWER 118.3 257.8	GND CON 121.9 348.6
----------------------------	---------------------------------------	------------------------------------	-------------------------------

ALTERNATE MISSED APCH FIX

PYKLA
 DL 379
 RADAR

ADF or RADAR REQUIRED



CATEGORY	A	B	C	D	E
S-ILS 9	1628/18 200 (200-½)				
S-LOC 9	1960/24	532 (600-½)	1960/55	532 (600-1)	
CIRCLING	1960-1	532 (600-1)	1960-1½ 532 (600-1½)	2400-3	972 (1000-3)

FAF to MAP 5.6 NM

Knots	60	90	120	150	180
Min:Sec	5:36	3:44	2:48	2:14	1:52

NC-1, 26 DEC 2024 to 23 JAN 2025

NC-1, 26 DEC 2024 to 23 JAN 2025