

TACAN LKI Chan 11 (135.4)	APP CRS 087°	Rwy ldg 10062 TDZE 1428 Apt Elev 1428
---	------------------------	--

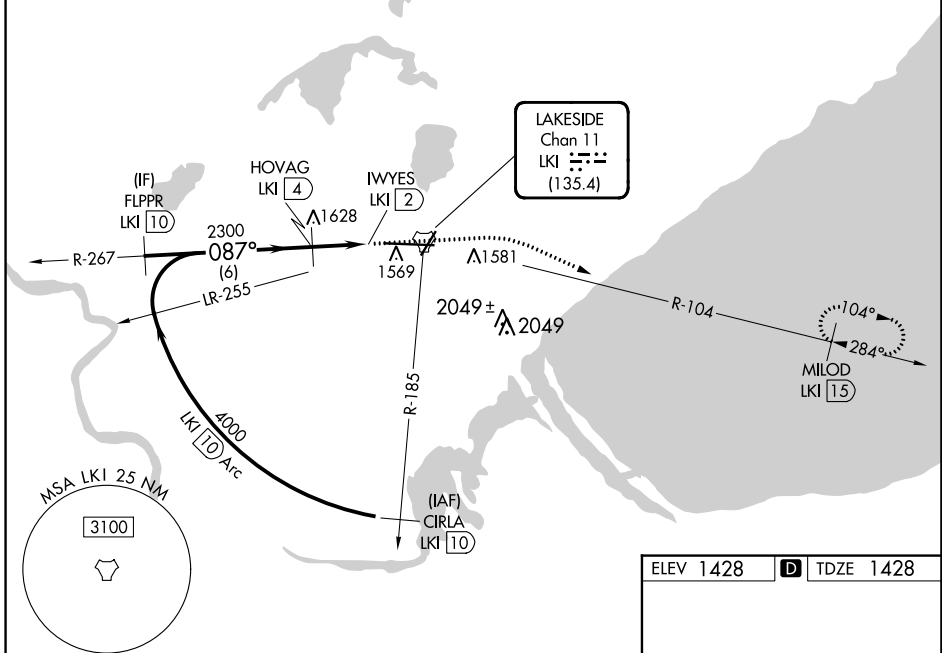
TACAN Y RWY 9

DULUTH INTL (DLH)

RADAR required for procedure entry.		ALSF-2 	MISSED APPROACH: Climb to 2500, then climbing right turn to 4000 on LKI TACAN R-104 to MILOD/1.5 DME and hold.
 * For inop ALS, increase S-9 Cat E visibility to 1 3/8 SM. # Circling NA for Cats D and E southeast of Rwys 3 and 27.			

ATIS 124.1 270.1	DULUTH APP CON 125.45 233.7	DULUTH TOWER 118.3 257.8	GND CON 121.9 348.6
----------------------------	---------------------------------------	------------------------------------	-------------------------------

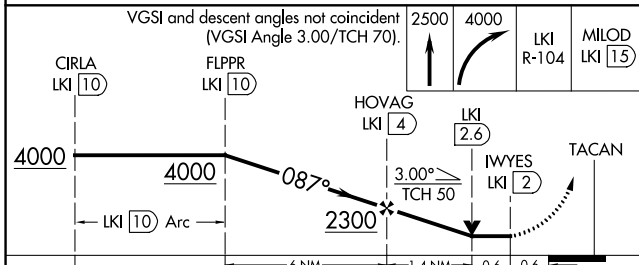
CAUTION: Do not select channel 73 "DLH" for channel 11 "LKI".
Towers 2049' on R-099 channel 73 "DLH".



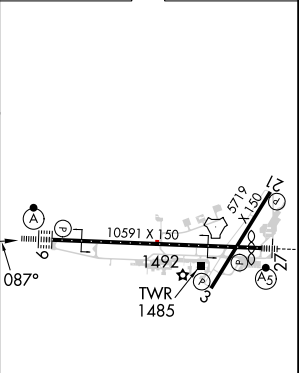
NC-1, 26 DEC 2024 to 23 JAN 2025

NC-1, 26 DEC 2024 to 23 JAN 2025

EMERGENCY SAFE ALT 100 NM 4100



ELEV 1428	D TDZE 1428
-----------	--------------------



CATEGORY	A	B	C	D	E
S-9*	1880/24	452 (500-1/2)	1880/45	452 (500-7/8)	
C CIRCLING#	1920-1	492 (500-1)	1940-1 1/2 512 (600-1 1/2)	2020-2 592 (600-2)	2060-2 1/4 632 (700-2 1/4)

TDZ/CL Rwy 9
REIL Rwys 3 and 21
HIRL Rwys 9-27
MIRL Rwys 3-21