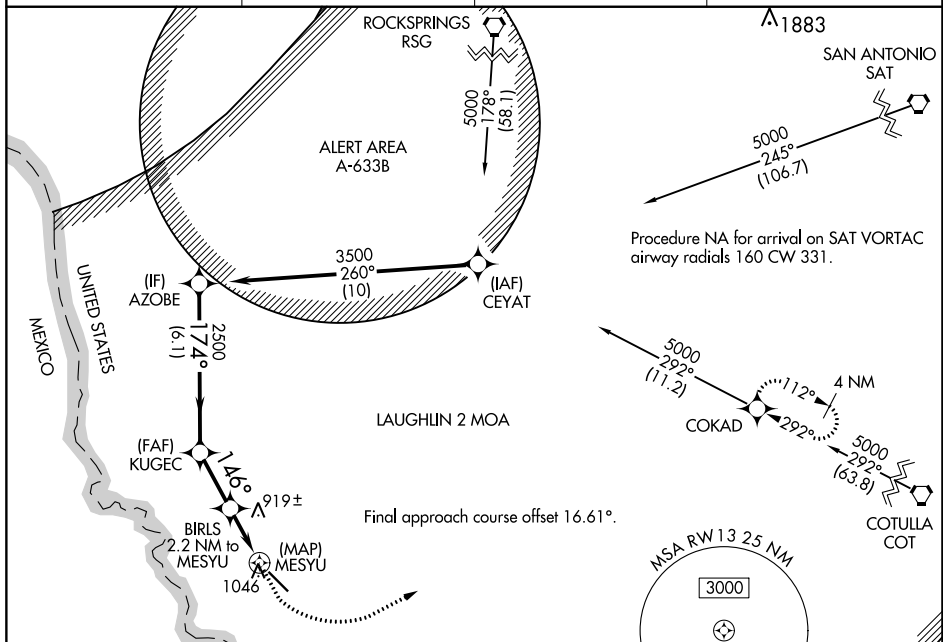


WAAS CH <b>65942</b> <b>W13A</b>	APP CRS <b>146°</b>	Rwy ldg TDZE <b>887</b> Apt Elev <b>887</b>	<b>5506</b>
--	------------------------	---	-------------

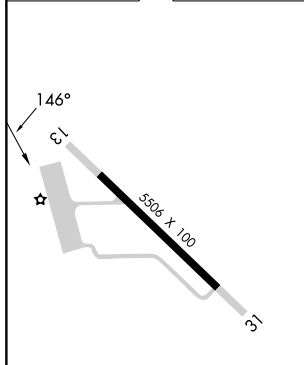
# RNAV (GPS) RWY 13

MAVERICK COUNTY MEML INTL (5T9)

RNP APCH.		MISSED APPROACH: Climb to 1600 then climbing left turn to 4000 direct COKAD and hold.	
AWOS-3 <b>119.175</b>	KDLF ATIS ★ <b>114.4 269.9</b>	DEL RIO APP CON ★ <b>127.75 326.2</b>	UNICOM <b>122.8</b> (CTAF) <b>0</b>



ELEV <b>887</b>	TDZE <b>887</b>
-----------------	-----------------



AZOBE	KUGEK	BIRLS	MESYU	COKAD
3500	2500	1780	1600	4000
6.1 NM	2.3 NM	1.6 NM	0.6 NM	0.5 NM
CATEGORY	A	B	C	D
LP MDA	1260-1	373 (400-1)	NA	NA
LNAV MDA	1360-1	473 (500-1)	1360-1 $\frac{3}{8}$ 473 (500-1 $\frac{3}{8}$ )	NA

SC-3, 26 DEC 2024 to 23 JAN 2025

SC-3, 26 DEC 2024 to 23 JAN 2025