

WAAS CH <b>63207</b> <b>W31A</b>	APP CRS <b>309°</b>	Rwy Idg <b>5506</b> TDZE <b>882</b> Apt Elev <b>887</b>
--	------------------------	---

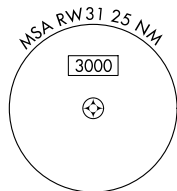
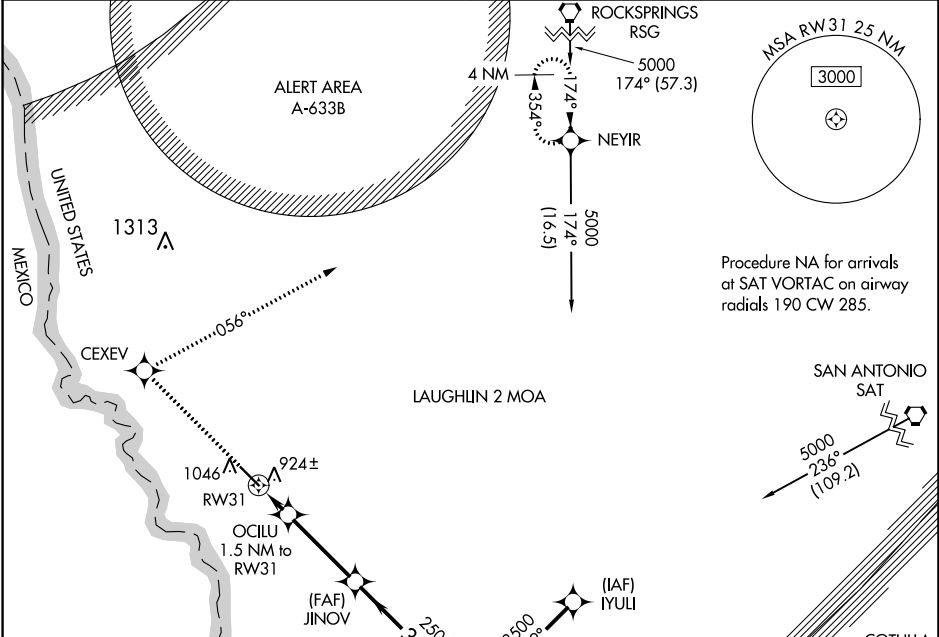
# RNAV (GPS) RWY 31

MAVERICK COUNTY MEML INTL (5T9)

**Baro-VNAV NA.** DME/DME RNP-0.3 NA. Use Laughlin AFB altimeter setting; when not received, use Del Rio Intl altimeter setting.

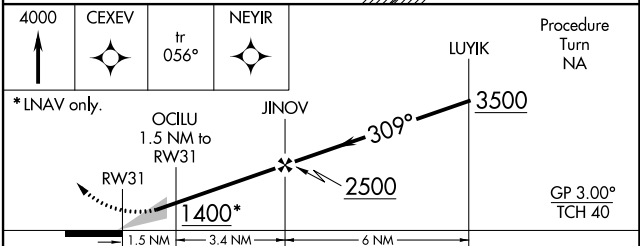
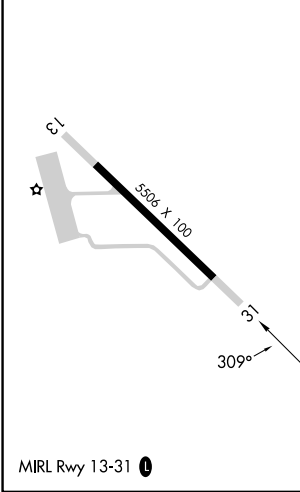
**MISSED APPROACH:** Climb to 4000 direct CEXEV and via 056° track to NEYIR and hold.

AWOS-3 <b>119.175</b>	KDLF ATIS* <b>114.4 269.9</b>	DEL RIO APP CON * <b>127.75 326.2</b>	UNICOM <b>122.8</b> (CTAF) <b>0</b>
--------------------------	----------------------------------	--	--



Procedure NA for arrivals at SAT VORTAC on airway radials 190 CW 285.

ELEV <b>887</b>	TDZE <b>882</b>
-----------------	-----------------



CATEGORY	A	B	C	D
LPV DA	1236-1¼		354 (400-1¼)	NA
LNAV/VNAV DA	1298-1½		416 (500-1½)	NA
LNAV MDA	1280-1		398 (400-1)	NA
CIRCLING	1500-1 613 (700-1)		1500-1¾ 613 (700-1¾)	NA

SC-3, 26 DEC 2024 to 23 JAN 2025

SC-3, 26 DEC 2024 to 23 JAN 2025