

APP CRS
211°
 Rwy ldg **4501**
 TDZE **1958**
 Apt Elev **1987**

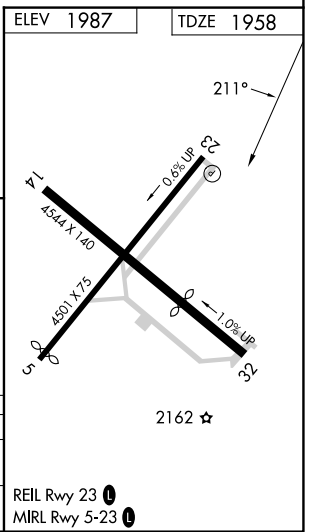
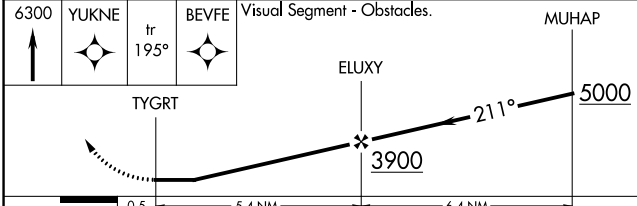
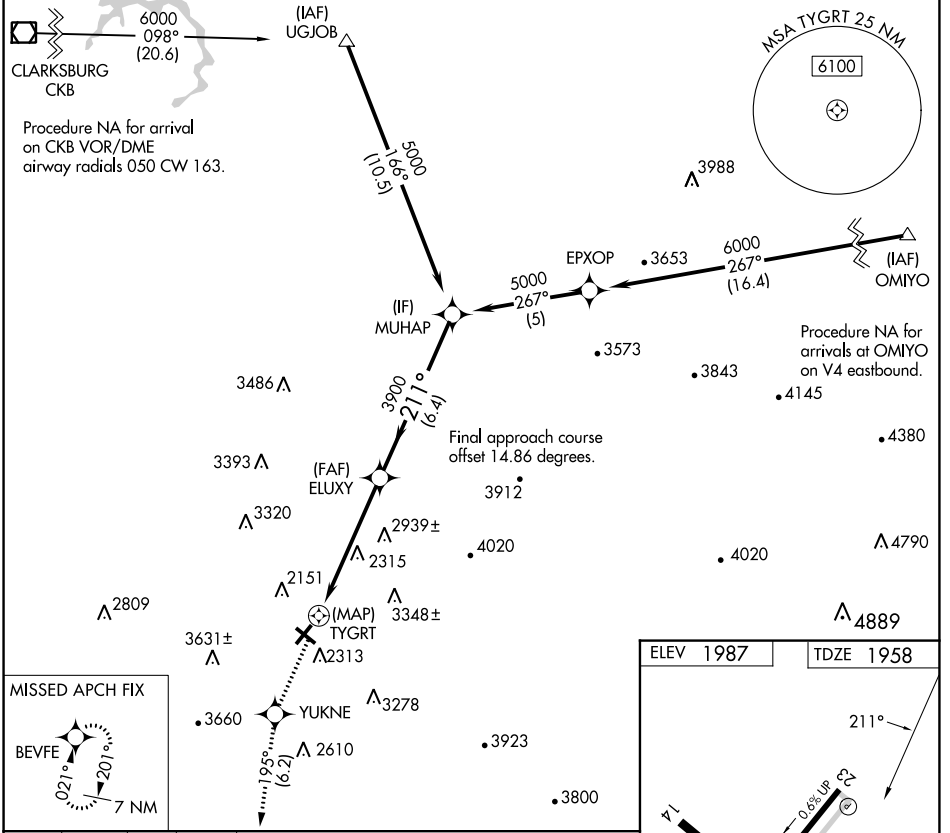
RNAV (GPS) RWY 23

ELKINS/RANDOLPH COUNTY (JENNINGS RANDOLPH FLD) (EKN)

RNP APCH. Straight-in Rwy 23 NA at night, Circling to Rwy 14, 23, 32 NA at night. When local altimeter setting not received, use Buckhannon altimeter setting and increase all MDAs 100 feet. Rwy 23 helicopter visibility reduction below 1 SM NA. -20°C

MISSED APPROACH: Climb to 6300 direct YUKNE and on track 195° to BEVFE and hold, continue climb-in hold to 6300.

| | | | |
|------------------------|--|----------------------|----------------|
| ASOS 119.275 | CLARKSBURG APP CON ★ 121.15 284.65 | CTAF 123.6 | 122.9 0 |
|------------------------|--|----------------------|----------------|



| CATEGORY | A | B | C | D |
|----------|---------------------------|---------------------------|-------------------------|---------------|
| LNVA MDA | 3160-1¼ 1202 (1200-1¼) | 3160-1½ 1202 (1200-1½) | 3160-3 | 1202 (1200-3) |
| CIRCLING | 3160-1¼ 1173 (1200-1¼) | 3160-1½ 1173 (1200-1½) | 3720-3 1733 (1800-3) | NA |

RNAV (GPS) RWY 23

NE-4, 26 DEC 2024 to 23 JAN 2025

NE-4, 26 DEC 2024 to 23 JAN 2025