

# RNAV (GPS)-A

ELKINS/RANDOLPH COUNTY (JENNINGS RANDOLPH FLD) (EKN)

APP CRS	Rwy Idg	N/A
331°	TDZE	N/A
	Apt Elev	1987

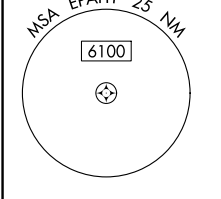
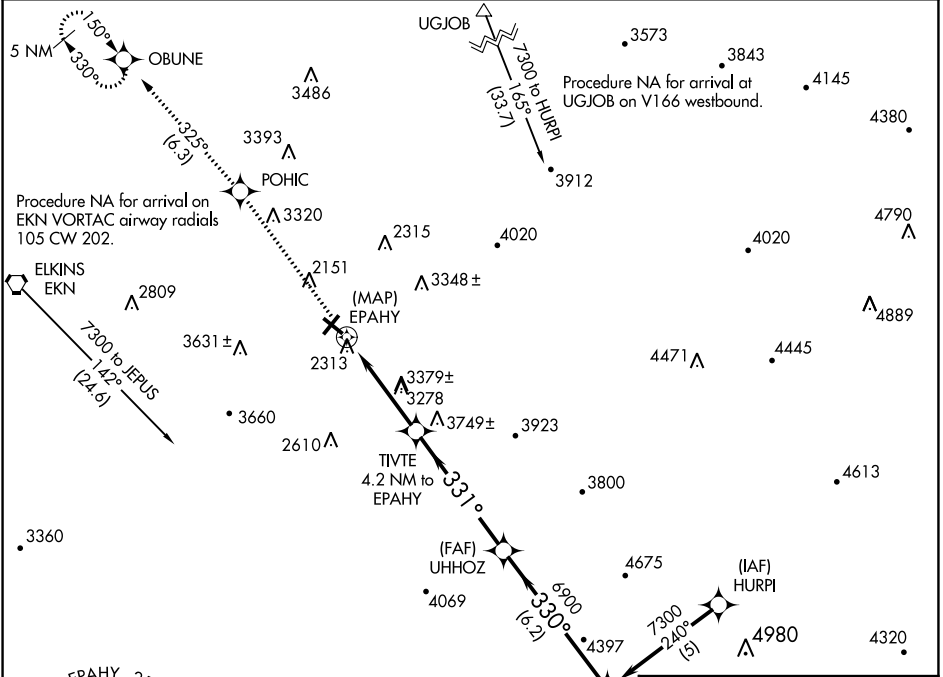
RNP APCH.

**⚠** Circling Rwy 14, 23, 32 NA at night. When local altimeter setting not received, use Buckhannon altimeter setting and increase all MDA 100 feet.

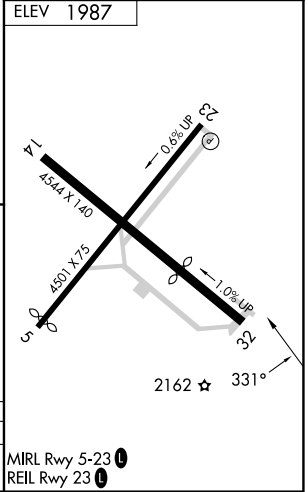
**❄** -20°C

**MISSED APPROACH:** Climb to 4500 direct POHIC and on track 325° to OBUNE and hold.

ASOS <b>119.275</b>	CLARKSBURG APP CON ★ <b>121.15 284.65</b>	CTAF <b>123.6</b>	<b>122.9 0</b>
------------------------	--	----------------------	----------------



4500	POHIC	tr 325°	OBUNE	Visual Segment - Obstacles.	OMORE
↑	✧		✧	TIVTE 4.2 NM to EPAHY	UHHOZ
EPAHY				5300	6900
4.2 NM		5.3 NM		6.2 NM	



CATEGORY	A	B	C	D
<b>C</b> CIRCLING	3640-1¼ 1653 (1700-1¼)	3640-1½ 1653 (1700-1½)	3720-3 1733 (1800-3)	NA

MIRL Rwy 5-23 **0**  
REIL Rwy 23 **0**

NE-4, 26 DEC 2024 to 23 JAN 2025

NE-4, 26 DEC 2024 to 23 JAN 2025

# RNAV (GPS)-A