

APP CRS	Rwy Idg	7217
057°	TDZE	5051
	Apt Elev	5140

RNAV (GPS) RWY 6

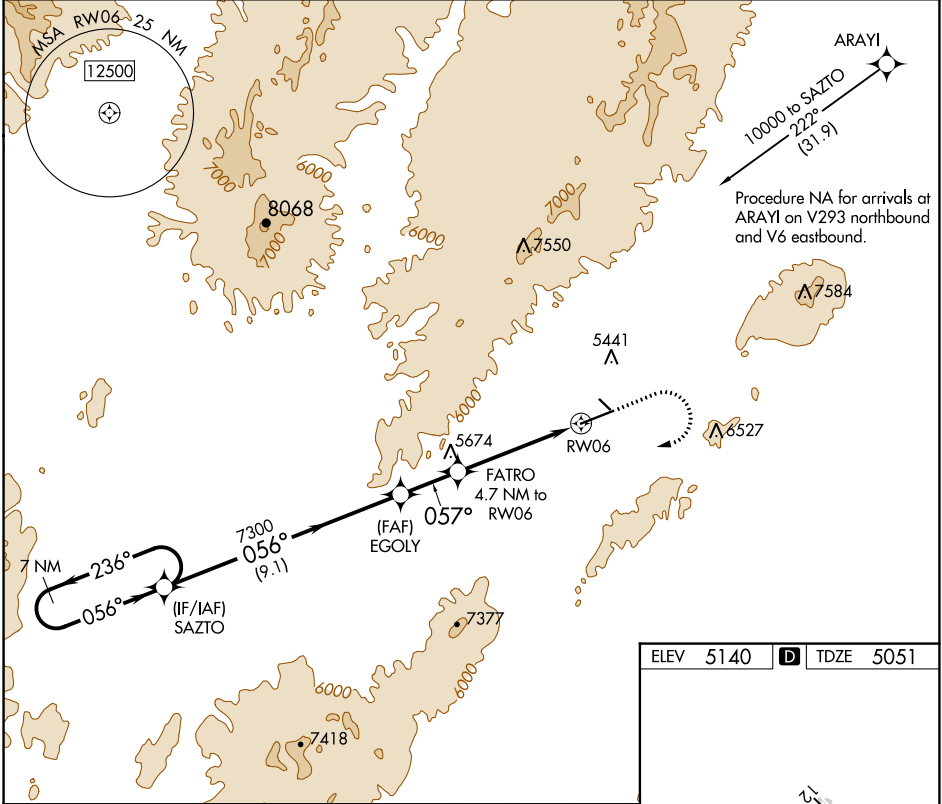
ELKO RGNL (EKO)

RNP APCH.

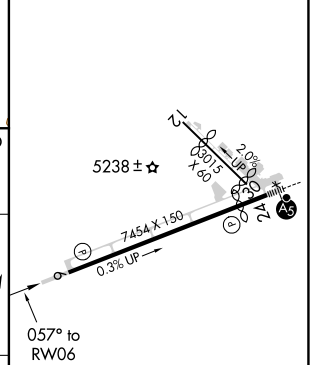
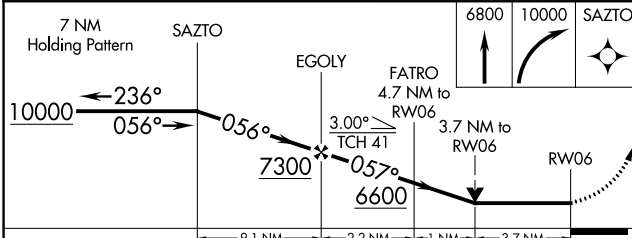
▼ Circling Rwy 24 NA at night.
▲ Rwy 6 helicopter visibility reduction below 3/4 SM NA.

MISSED APPROACH: Climb to 6800 then climbing right turn to 10000 direct SAZTO and hold, continue climb-in-hold to 10000.

ASOS 119.275	SALT LAKE CENTER 132.25 338.35	UNICOM 123.0 (CTAF) 0
------------------------	--	---------------------------------



ELEV 5140	D TDZE 5051
-----------	--------------------



CATEGORY	A	B	C	D
LNVA MDA	6280-1¼ 1229 (1200-1¼)	6280-1½ 1229 (1200-1½)	6280-3	1229 (1200-3)
C CIRCLING	6280-1¼ 1140 (1200-1¼)	6280-1½ 1140 (1200-1½)	6640-3 1500 (1500-3)	6960-3 1820 (1900-3)

MIRL Rwy 6-24 **0**

SW-4, 26 DEC 2024 to 23 JAN 2025

SW-4, 26 DEC 2024 to 23 JAN 2025