

LOC I-UEK <b>109.1</b>	APP CRS <b>062°</b>	Rwy ldg TDZE Apt Elev	<b>7401</b> <b>944</b> <b>955</b>
---------------------------	------------------------	-----------------------------	---

# ILS or LOC RWY 6

ELMIRA/CORNING RGNL (E.L.M)

RADAR required to define JOKEN, CONAC, RNAV 1-GPS required for procedure entry. RNAV 1-GPS required from MAP to IREKE.

**⚠** Inop table does not apply to S-LOC 6 Cats C/D. Circling NA to Rwy 5 and 23. Circling NA for Cat D south of Rwy 10 and 28. Circling Rwy 10 NA at night. For inop ALS, increase S-LOC 6 CONAC fix minimums Cats C/D visibility to 2½ SM.

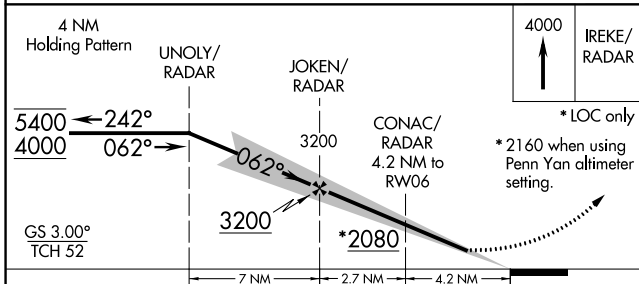
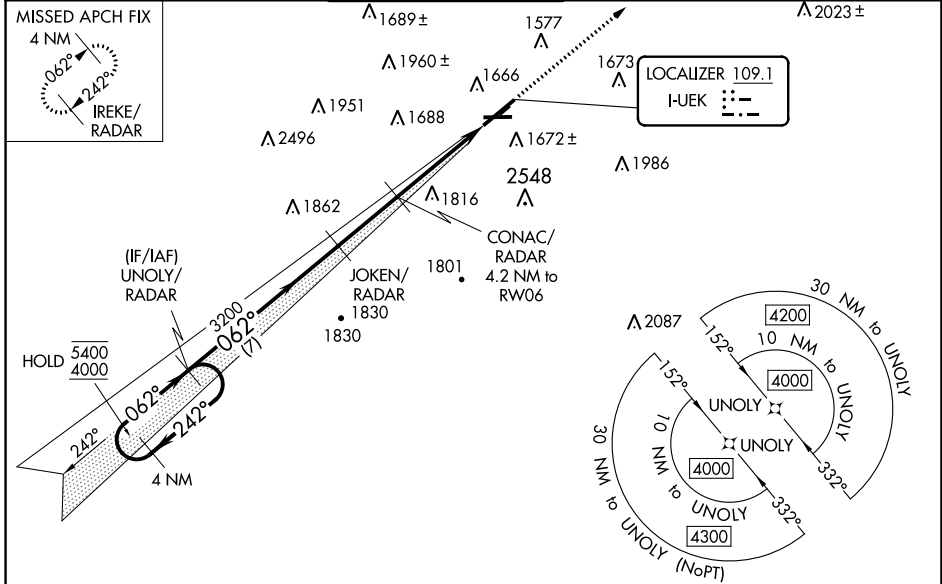
**❄** -22°C

\*\* RVR 1800 authorized with use of FD or AP or HUD to DA.



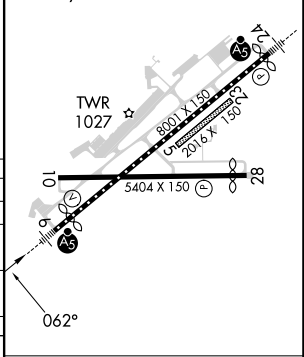
MISSED APPROACH:  
Climb to 4000 direct IREKE/RADAR and hold.

ATIS <b>125.475</b>	ELMIRA APP CON * <b>128.425 257.8</b>	ELMIRA TOWER * <b>121.1 (CTAF) 0 257.8</b>	GND CON <b>121.9</b>	CLNC DEL <b>121.9</b>	UNICOM <b>122.95</b>
------------------------	--	---	-------------------------	--------------------------	-------------------------



ELEV 955	<b>D</b> TDZE 944
----------	-------------------

HIRL Rwy 6-24  
MIRL Rwy 10-28  
REIL Rwy 6 and 24



CATEGORY	A	B	C	D
S-ILS 6**	1144/24 200 (200-½)			
S-LOC 6	2080/40 1136 (1200-¾)	2080/55 1136 (1200-1)	2080-3	1136 (1200-3)
<b>C</b> CIRCLING	2080-1¼ 1125 (1200-1¼)	2080-1½	2100-3 1145 (1200-3)	2340-3 1385 (1400-3)
CONAC FIX MINIMUMS				
S-LOC 6	1740/24 796 (800-½)	1740/40 796 (800-¾)	1740-1¾	796 (800-1¼)
<b>C</b> CIRCLING	2020-1¼ 1065 (1100-1¼)	2080-1½	2100-3 1145 (1200-3)	2340-3 1385 (1400-3)

FAF to MAP 6.9 NM					
Knots	60	90	120	150	180
Min:Sec	6:54	4:36	3:27	2:46	2:18

NE-2, 26 DEC 2024 to 23 JAN 2025

NE-2, 26 DEC 2024 to 23 JAN 2025