

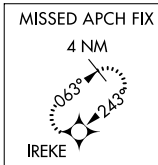
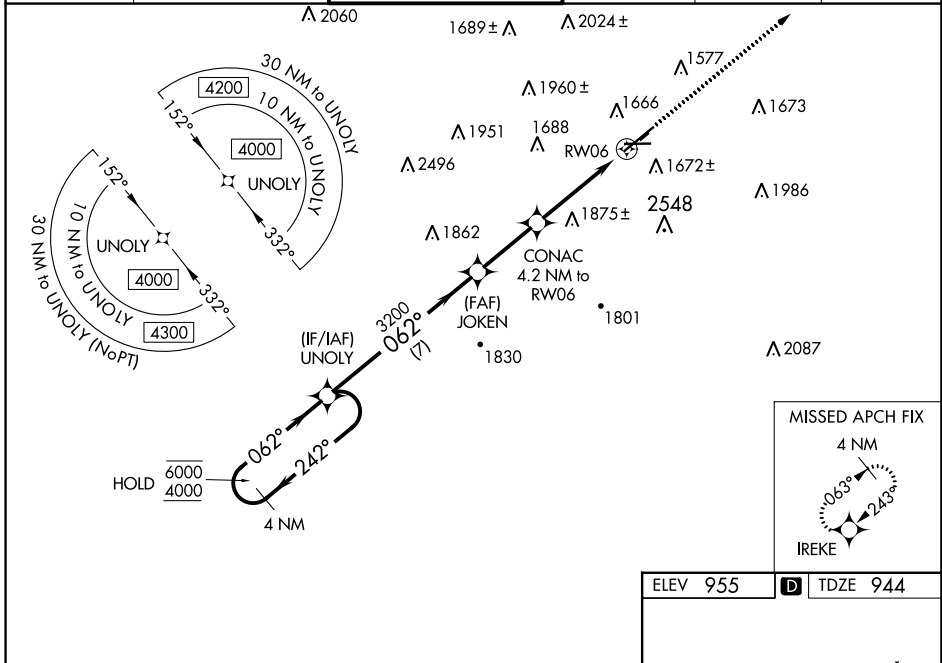
WAAS CH 42827 W06A	APP CRS 062°	Rwy Idg TDZE Apt Elev	7401 944 955
--	------------------------	-----------------------------	---

RNAV (GPS) RWY 6

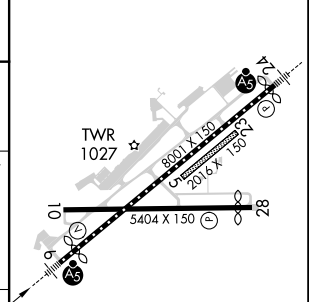
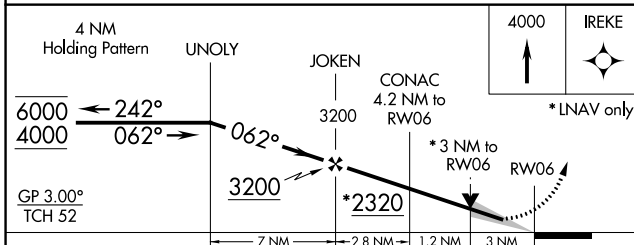
ELMIRA/CORNING RGNL (ELM)

RNP APCH.	Inop table does not apply to LNAV/VNAV all Cats. Circling Rwy 10 NA at night. Circling NA to Rws 5 and 23. Circling NA for Cat D south of Rws 10 and 28. For uncompensated Baro-VNAV systems, LNAV/VNAV NA below -21°C or above 54°C. # RVR 1800 authorized with use of FD or AP or HUD to DA.	MALSR 	MISSED APPROACH: Climb to 4000 direct IREKE and hold.
-22°C			

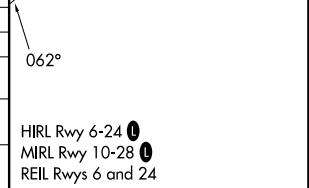
ATIS 125.475	ELMIRA APP CON * 128.425 257.8	ELMIRA TOWER * 121.1 (CTAF) 0 257.8	GND CON 121.9	CLNC DEL 121.9	UNICOM 122.95
------------------------	--	---	-------------------------	--------------------------	-------------------------



ELEV 955	D TDZE 944
----------	-------------------



CATEGORY	A	B	C	D
LPV DA#		1144/24	200 (200-1/2)	
LNAV/VNAV DA		2138-5	1194 (1200-5)	
LNAV MDA	1940/40 996 (1000-3/4)	1940/55 996 (1000-1)	1940-2 1/2	996 (1000-2 1/2)
CIRCLING	2020-1 1/4 1065 (1100-1 1/4)	2080-1 1/2 1125 (1200-1 1/2)	2100-3 1145 (1200-3)	2340-3 1385 (1400-3)



NE-2, 26 DEC 2024 to 23 JAN 2025

NE-2, 26 DEC 2024 to 23 JAN 2025