

APP CRS	Rwy Idg	<b>5499</b>
<b>265°</b>	TDZE	<b>3950</b>
	Apt Elev	<b>3962</b>

# RNAV (GPS) RWY 26R

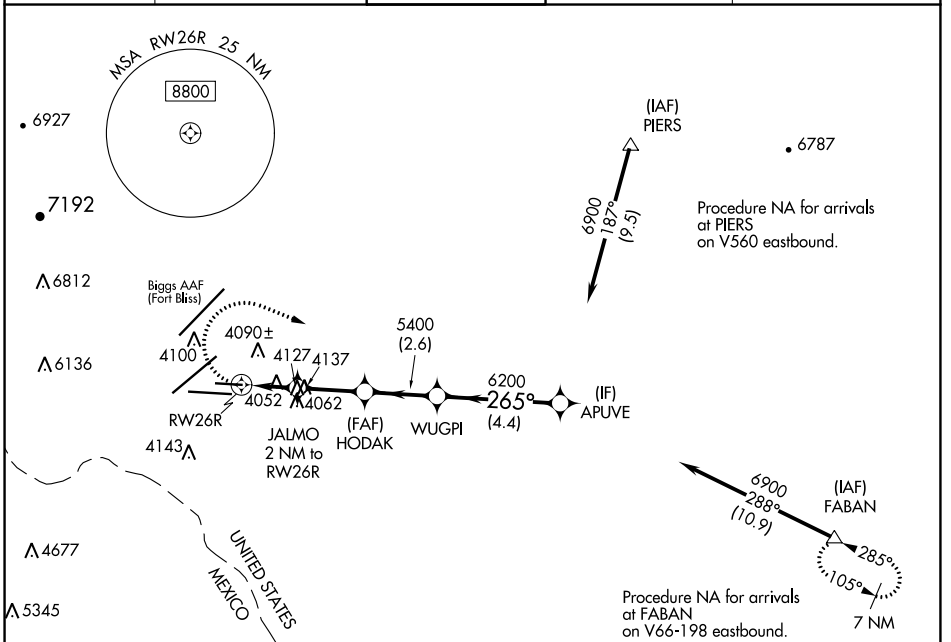
EL PASO INTL (ELP)

RNP APCH-GPS

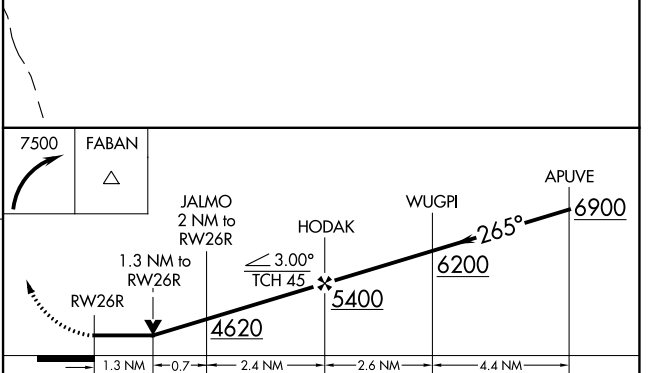
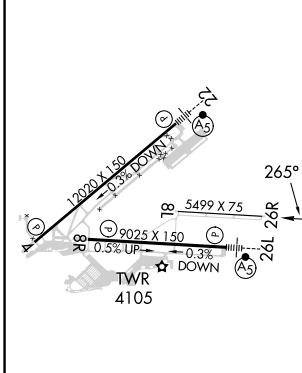
**ASR** Circling NA for Cat D north of Rwy 26R and northwest of Rwy 4. Rwy 26R helicopter visibility reduction below ¾ SM NA.

MISSED APPROACH: Climbing right turn 7500 direct FABAN and hold.

D-ATIS	EL PASO APP CON	EL PASO TOWER	GND CON	CLNC DEL
<b>120.0 254.3</b>	<b>124.25 298.85</b>	<b>118.3 239.275</b>	<b>121.9 348.6</b>	<b>125.0 379.1</b>



ELEV 3962	<b>D</b>	TDZE 3950
-----------	----------	-----------



	A	B	C	D
CATEGORY	A	B	C	D
LNAV MDA	4400-1	450 (500-1)	4400-1 3/8	450 (500-1 3/8)
<b>C</b> CIRCLING	4420-1 458 (500-1)	4440-1 478 (500-1)	4480-1 1/2 518 (600-1 1/2)	4680-2 1/4 718 (800-2 1/4)

EL PASO, TEXAS  
Amdt 1A 29DEC22

31°48'N-106°23'W

# RNAV (GPS) RWY 26R

SC-3, 26 DEC 2024 to 23 JAN 2025

SC-3, 26 DEC 2024 to 23 JAN 2025