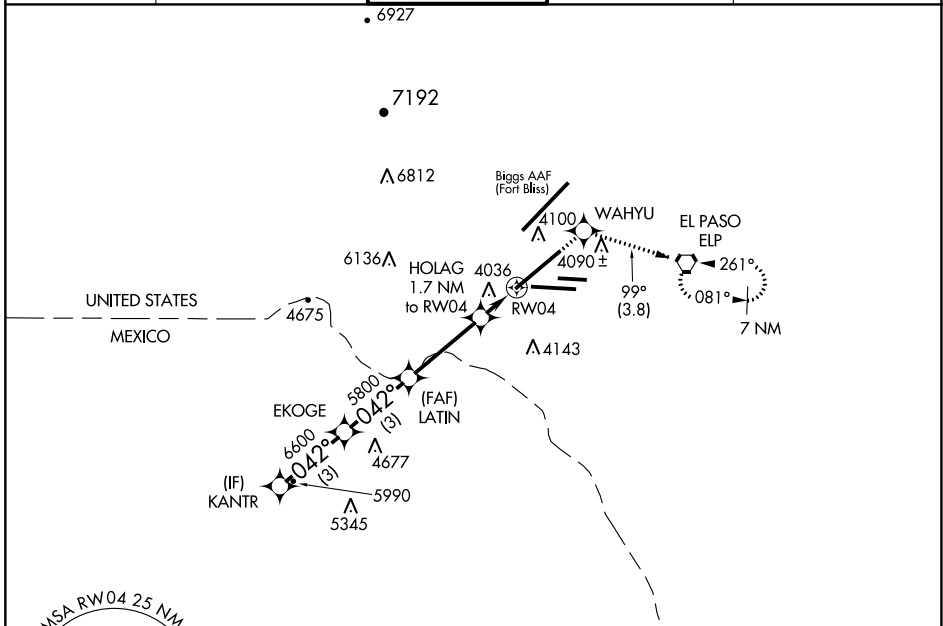


APP CRS <b>042°</b>	Rwy Idg TDZE Apt Elev	<b>12020</b> <b>3923</b> <b>3962</b>
------------------------	-----------------------------	--

# RNAV (GPS) X RWY 4

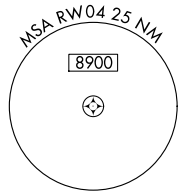
EL PASO INTL (ELP)

RNP APCH-GPS.		MISSED APPROACH: Climb to 6900 direct WAHYU and on track 099° to ELP VORTAC and hold, continue climb-in-hold to 6900.				
⚠ Circling NA for Cat D north of Rwy 26R and northwest of Rwy 4. ⚠ ASR		D-ATIS <b>120.0 254.3</b>	EL PASO APP CON <b>124.25 298.85</b>	EL PASO TOWER <b>118.3 239.275</b>	GND CON <b>121.9 348.6</b>	CLNC DEL <b>125.0 379.1</b>

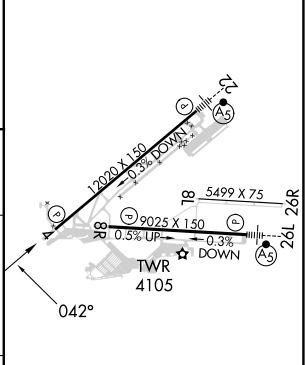
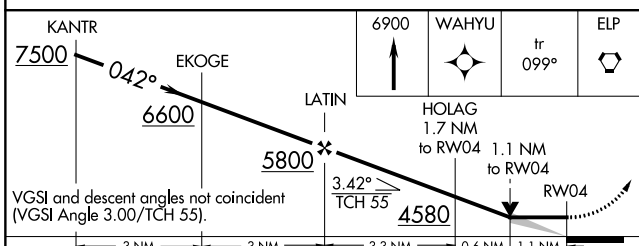


SC-3, 26 DEC 2024 to 23 JAN 2025

SC-3, 26 DEC 2024 to 23 JAN 2025



ELEV 3962	<b>D</b> TDZE 3923
-----------	--------------------



CATEGORY	A	B	C	D
LNVA MDA	4320/55	397 (400-1)	4320/60	397 (400-1½)
<b>C</b> CIRCLING	4420-1 458 (500-1)	4460-1 498 (500-1)	4480-1½ 518 (600-1½)	4680-2¼ 718 (800-2¼)

MIRL Rwy 8L-26R  
REIL Rws 4 and 8R  
HIRL Rws 4-22 and 8R-26L