

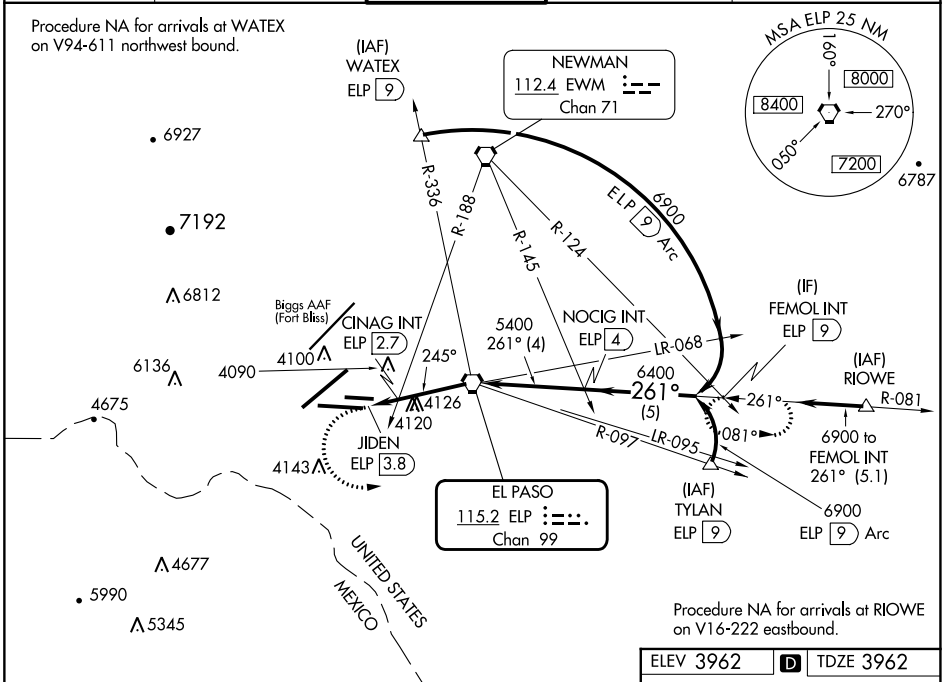
VORTAC ELP 115.2 Chan 99	APP CRS 245°	Rwy Idg TDZE 9025 Apt Elev 3962
--	------------------------	---

VOR RWY 26L

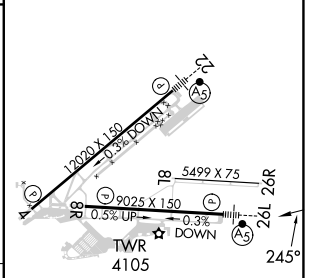
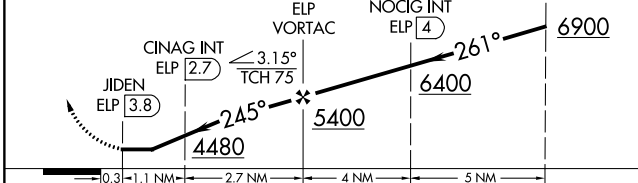
EL PASO INTL (ELP)

⚠ ASR	Inop table does not apply to S-26L and CINAG fix minimums S-26L. Circling NA for Cat D northwest of Rwy 4-22.	MALSR 	MISSED APPROACH: Climb to 4500 then climbing left turn to 7100 on heading 050° and on ELP VORTAC R-081 to FEMOL INT/9 DME and hold.
-----------------	---	-----------	---

D-ATIS 120.0 254.3	EL PASO APP CON 124.25 298.85	EL PASO TOWER 118.3 239.275	GND CON 121.9 348.6	CLNC DEL 125.0 379.1
------------------------------	---	---------------------------------------	-------------------------------	--------------------------------



ELEV 3962	D	TDZE 3962
-----------	----------	-----------



CATEGORY	A	B	C	D	E
S-26L	4480-1 518 (600-1)		4480-1 ³ / ₈ 518 (600-1 ³ / ₈)		NA
C CIRCLING	4480-1 518 (600-1)		4480-1 ¹ / ₂ 518 (600-1 ¹ / ₂)	4680-2 718 (800-2)	NA
CINAG FIX MINIMUMS (DUAL VOR RECEIVERS OR DME REQUIRED)					
S-26L	4380-1 418 (500-1)		4380-1 ¹ / ₈ 418 (500-1 ¹ / ₈)		NA
C CIRCLING	4420-1 458 (500-1)	4440-1 478 (500-1)	4480-1 ¹ / ₂ 518 (600-1 ¹ / ₂)	4680-2 ¹ / ₄ 718 (800-2 ¹ / ₄)	NA

MRL Rwy 8L-26R REIL Rws 4 and 8R HIRL Rws 4-22 and 8R-26L					
FAF to MAP 3.8 NM					
Knots	60	90	120	150	180
Min:Sec	3:48	2:32	1:54	1:31	1:16