

# ILS or LOC RWY 17C

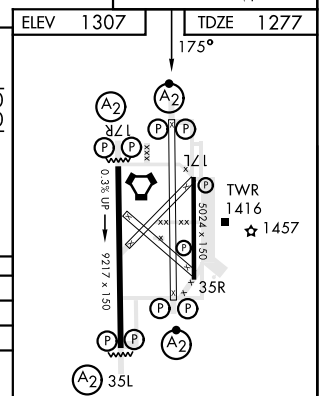
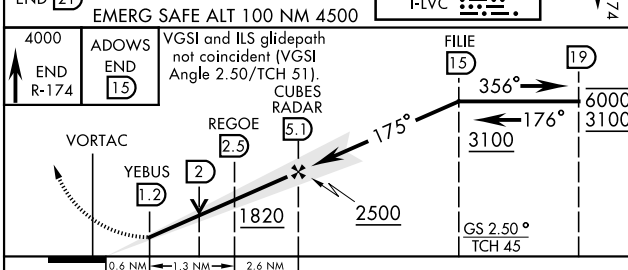
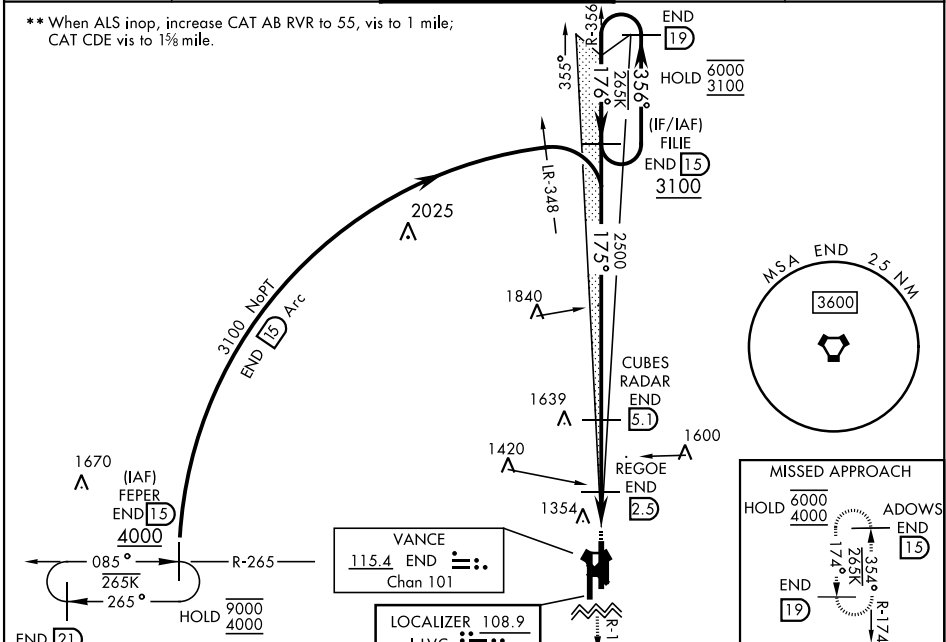
LOC I-LVC <b>108.9</b>	APCH CRS <b>175°</b>	Rwy Idg <b>9217</b>
		TDZE <b>1277</b>
		Arprt Elev <b>1307</b>

AL-135 [USAF]

VANCE AFB (KEND)

RADAR or DME required.	SALSF <b>(A2)</b>	MISSED APPROACH: Climb to 4000, intercept END VORTAC R-174 to ADOWS and hold.
------------------------	----------------------	---

ATIS ★ <b>115.4 263.15</b>	APP CON <b>125.45 388.2 EAST</b> <b>126.75 346.325 WEST</b>	TOWER ★ <b>124.05 259.1</b>	GND CON <b>121.675 289.4</b>	CLNC DEL <b>225.4</b>
-------------------------------	---	--------------------------------	---------------------------------	--------------------------



CATEGORY	A	B	C	D	E
S-ILS 17C	1477/40		200	(200-¾)	
S-LOC 17C *	1680/40 403 (400-¾)		1680/50 403 (400-1)		
CIRCLING	1760-1 453 (500-1)		1800-1½ 493 (500-1½)	1900-2 593 (600-2)	2300-3 993 (1000-3)
	WITHOUT REGOE FIX				
S-LOC 17C **	1820/40 543 (600-¾)		1820-1½ 543 (600-1½)		
CIRCLING	1820-1 513 (600-1)		1820-1½ 513 (600-1½)	1900-2 593 (600-2)	2300-3 993 (1000-3)

HIRL Rwy 17C-35C, 17R-35L  
MIRL Rwy 17L-35R  
REIL Rwy 17L-35R

FAF to MAP 3.9 NM

Knots	60	90	120	150	180
Min:Sec	3:54	2:36	1:57	1:34	1:18

# ILS or LOC RWY 17C

SC-1, 26 DEC 2024 to 23 JAN 2025

SC-1, 26 DEC 2024 to 23 JAN 2025