

ENID, OKLAHOMA

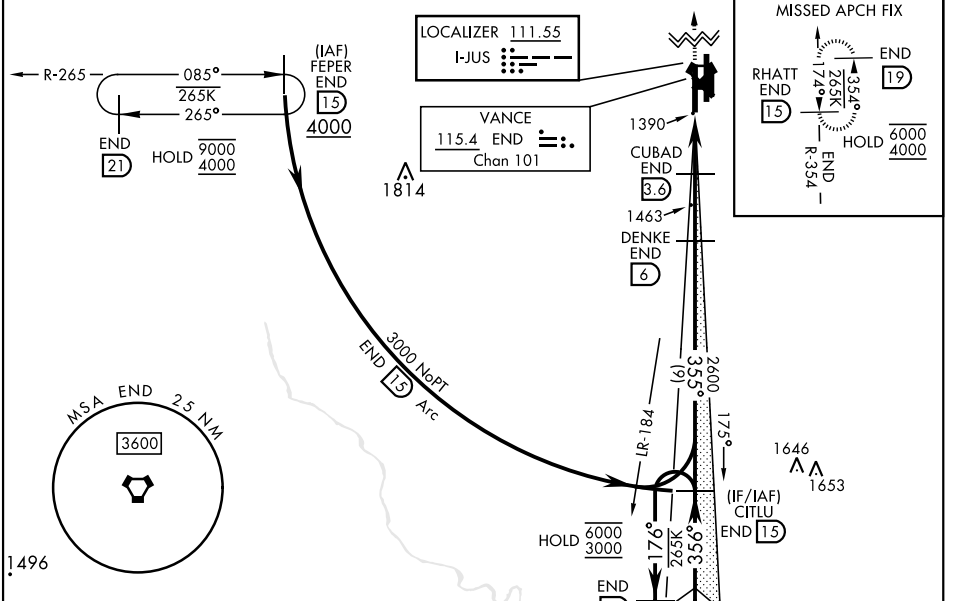
ILS or LOC RWY 35L

VANCE AFB (KEND)

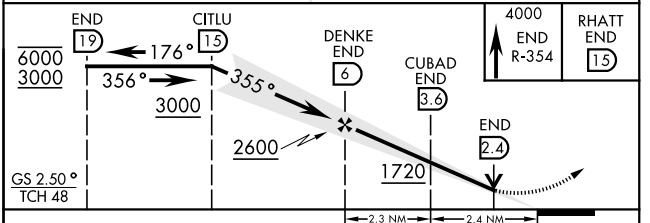
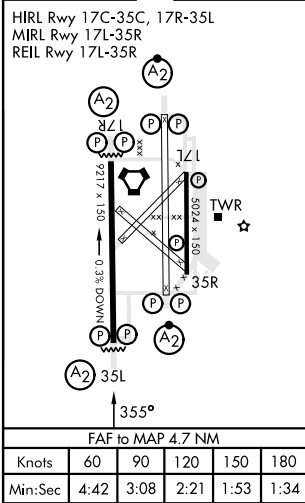
LOC I-JUS 111.55	APCH CRS 355°	Rwy Idg 9217	TDZE 1307	Arprt Elev 1307	[USAF]
----------------------------	-------------------------	-----------------	--------------	--------------------	--------

<p>▼ *When ALS inop, increase vis to 1 mile. **When ALS inop, increase CAT AB vis to 1 mile; CAT CDE vis to 1½ mile.</p>	<p>SALS A2</p>	<p>MISSED APPROACH: Climb to 4000, intercept END VORTAC R-354 to RHATT and hold.</p>
---	---------------------------	--

<p>ATIS ★ 115.4 263.15</p>	<p>APP CON 125.45 388.2 EAST 126.75 346.325 WEST</p>	<p>TOWER ★ 124.05 259.1</p>	<p>GND CON 121.675 289.4</p>	<p>CLNC DEL 225.4</p>
---------------------------------------	--	--	---	----------------------------------



EMERG SAFE ALT 100 NM 4500
 ELEV 1307 TDZE 1307



CATEGORY	A	B	C	D	E
S-ILS 35L	1507-¾		200	(200-¾)	
S-LOC 35L*	1660-¾		353	(400-¾)	
<input checked="" type="checkbox"/> CIRCLING	1760-1 453 (500-1)	1800-1½ 493 (500-1½)	1900-2 593 (600-2)	1940-2¼ 633 (700-2¼)	
LOCAL ALTIMETER, WITHOUT LAST STEPDOWN FIX					
S-LOC 35L**	1720-¾	413 (500-¾)	1720-1	413 (500-1)	
<input checked="" type="checkbox"/> CIRCLING	1760-1 453 (500-1)	1800-1½ 493 (500-1½)	1900-2 593 (600-2)	1940-2¼ 633 (700-2¼)	

ENID, OKLAHOMA
 Orig 30NOV23

36°20'N-97°55'W

VANCE AFB (KEND)

ILS or LOC RWY 35L

SC-1, 26 DEC 2024 to 23 JAN 2025

SC-1, 26 DEC 2024 to 23 JAN 2025