

ENID, OKLAHOMA

RNAV (GPS) RWY 17L

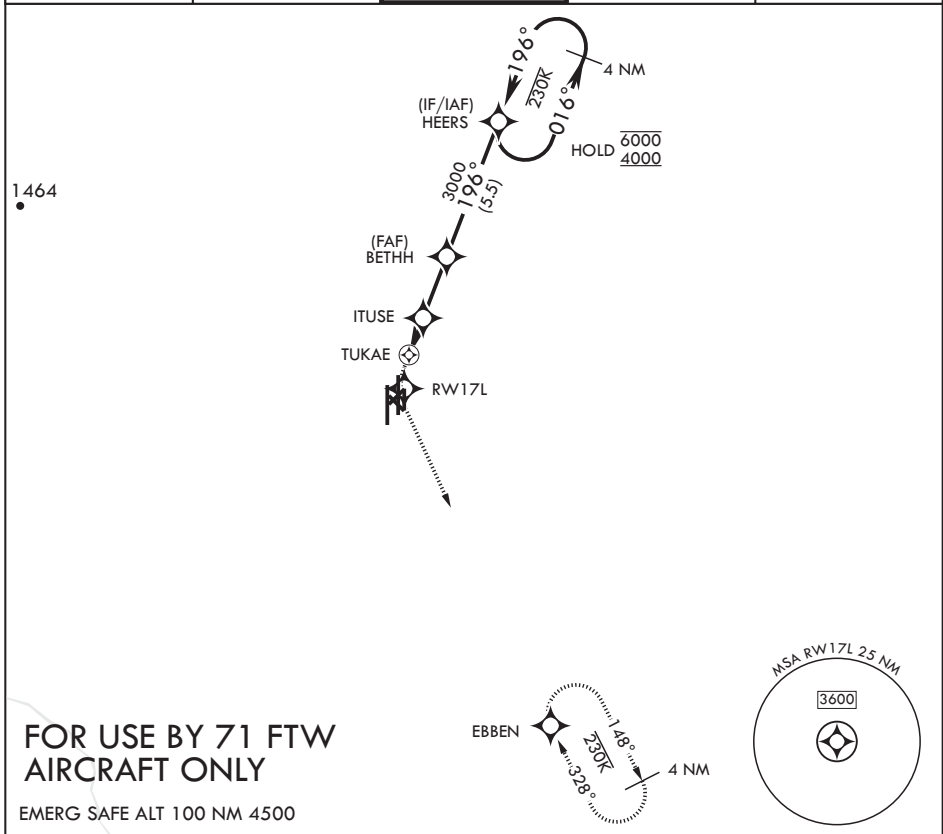
APCH CRS	Rwy Idg	5024
196°	TDZE	1282
	Arprt Elev	1307

AL-135 (USAF)

VANCE AFB (KEND)

RNP APCH	MISSED APPROACH: Climb to 1900 then climbing left turn to 4000 direct EBBEN and hold.
Circling Visibility Reduction by Helicopters NA.	

ATIS* 115.4 263.15	APP CON 125.45 388.2 (E) 126.75 346.325 (W)	TOWER* 124.05 259.1	GND CON 121.675 289.4	CLNC DEL 225.4
-----------------------	---	------------------------	--------------------------	-------------------



1900	4000	EBBEN	HEERS	4 NM Holding Pattern	ELEV 1307	TDZE 1282
CATEGORY	A		B		C	D
LNAV MDA	1720-1½	438	(500-1½)	NA		
CIRCLING	1760-1½	453	(500-1½)	NA		
HIRL Rwy 17C-35C, 17R-35L MIRL Rwy 17L-35R REIL Rwy 17L, 35R			9217 x 150 3024 x 150 35L 35R TWBR BCN			

ENID, OKLAHOMA

36°20'N - 97°55'W

VANCE AFB (KEND)

Orig 24MAR22
TERPS

RNAV (GPS) RWY 17L

SC-1, 26 DEC 2024 to 23 JAN 2025

SC-1, 26 DEC 2024 to 23 JAN 2025