

RNAV (GPS) Y RWY 35L

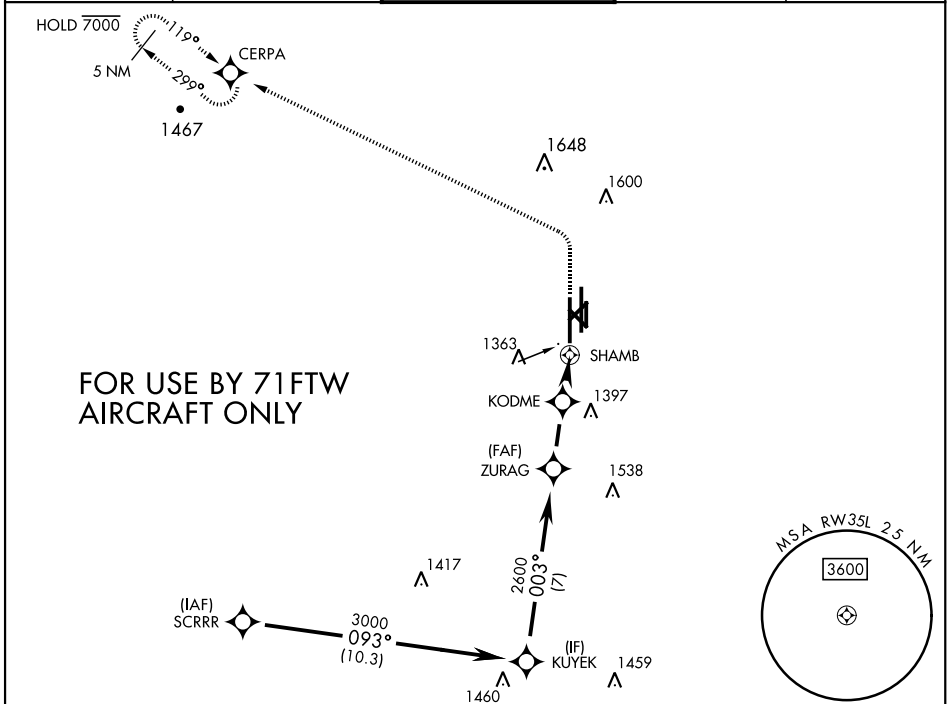
APCH CRS	Rwy Idg	9217
003°	THRE	1307
	Arpt Elev	1307

AL-135 [USAF]

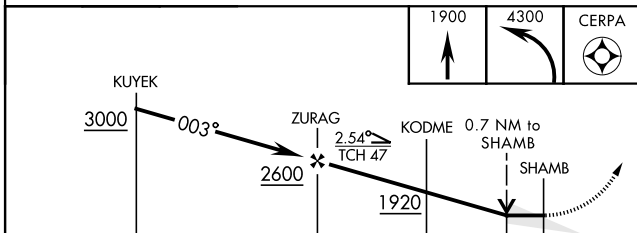
VANCE AFB (KEND)

RNP APCH	SALS	MISSED APPROACH: Climb to 1900, then climbing left turn to 4300 direct CERPA and hold.
RADAR required	(A2)	
* When ALS inop, increase vis to 1 mile. Circling visibility reduction by helicopters not authorized.		

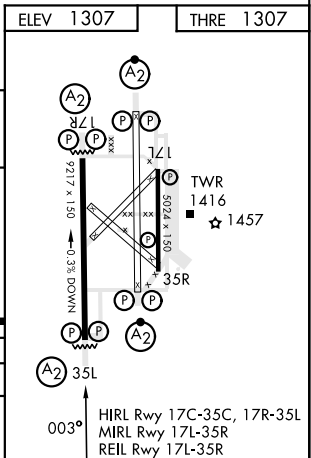
ATIS ★ 115.4 263.15	APP CON 125.45 388.2 (E) 126.75 346.325 (W)	TOWER ★ 124.05 259.1	GND CON 121.675 289.4	CLNC DEL 225.4
-------------------------------	---	--------------------------------	---------------------------------	--------------------------



EMERG SAFE ALT 100 NM 4500



CATEGORY	A	B	C	D	E
RNAV MDA *	1660 - 3/4		353	(400 - 3/4)	
CIRCLING	1760-1	453 (500-1)	1800-1 1/2 493 (500-1 1/2)	1900-2 593 (600-2)	2300-3 993 (1000-3)



RNAV (GPS) Y RWY 35L

SC-1, 26 DEC 2024 to 23 JAN 2025

SC-1, 26 DEC 2024 to 23 JAN 2025