

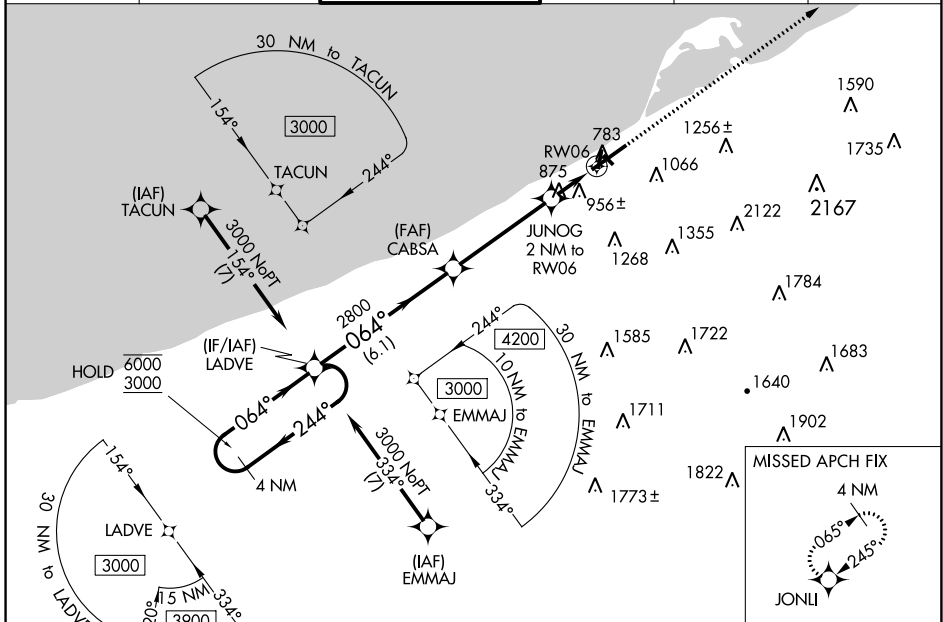
WAAS CH 77612 W06A	APP CRS 064°	Rwy Idg 7501 TDZE 732 Apt Elev 732
--	------------------------	---

RNAV (GPS) RWY 6

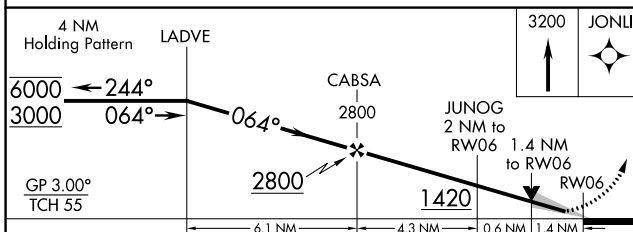
ERIE INTL/TOM RIDGE FLD (ERI)

RNP APCH - GPS.		MALSR 	MISSED APPROACH: Climb to 3200 direct JONLI and hold.
<p>⚠ Circling NA southeast of Rwy 6-24. Circling Rwy 2, 20 NA at night. For uncompensated Baro-VNAV systems, LNAV/VNAV NA below -15°C or above 54°C. For inop ALS, increase LNAV Cots C and D visibility to 1% SM.</p>			

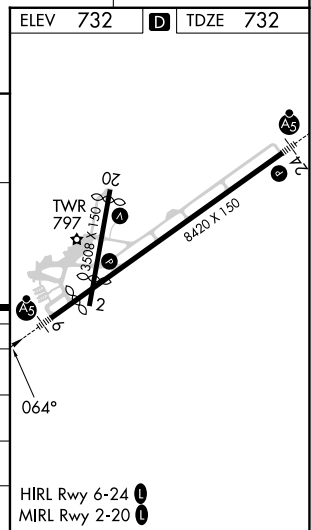
ATIS 120.35	BUFFALO APP CON * 121.0 257.8	ERIE TOWER * 118.1 (CTAF) 0 257.8	GND CON 121.9	CLNC DEL 126.8	UNICOM 122.95
-----------------------	---	---	-------------------------	--------------------------	-------------------------



ELEV 732	D TDZE 732
----------	-------------------



CATEGORY	A	B	C	D
LPV DA		982/24	250 (300-½)	
LNAV/VNAV DA		1256/55	524 (600-1)	
LNAV MDA	1220/24	488 (500-½)	1220/50	488 (500-1)
C CIRCLING	1220-1	488 (500-1)	1220-1½ 488 (500-1½)	1340-2 608 (700-2)



NE-4, 26 DEC 2024 to 23 JAN 2025

NE-4, 26 DEC 2024 to 23 JAN 2025