

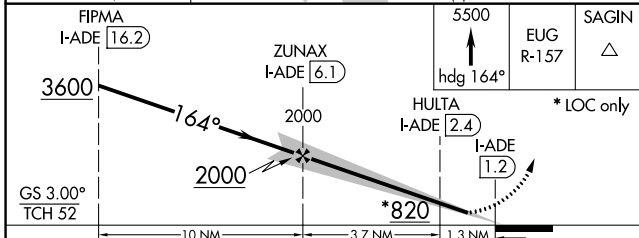
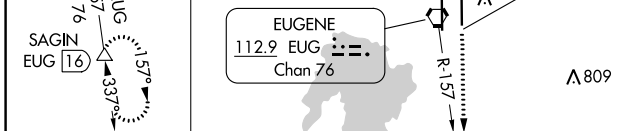
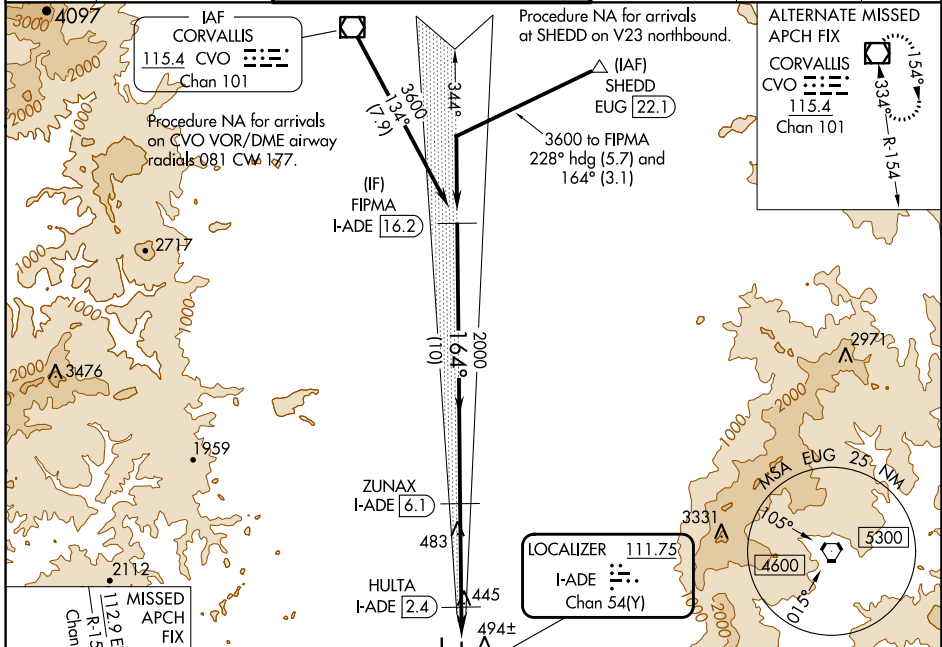
LOC/DME I-ADE <b>111.75</b> Chan 54 (Y)	APP CRS <b>164°</b>	Rwy Idg <b>6000</b>
		TDZE <b>369</b>
		Apt Elev <b>374</b>

# ILS or LOC RWY 16L

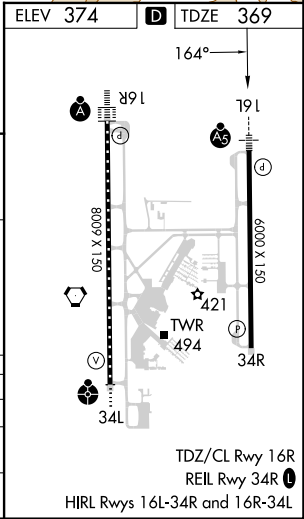
MAHLON SWEET FLD (EUG)

DME required.		MALS/R	MISSED APPROACH: Climb to 5500 on heading 164° and EUG VORTAC R-157 to SAGIN/EUG 16 DME and hold, continue climb-in-hold to 5500.	
Simultaneous approach authorized.				

ATIS <b>125.225</b>	CASCADE APP CON★ <b>119.6 348.7</b>	EUGENE TOWER★ <b>118.9</b> (CTAF) <b>371.9</b> (Rwy 16R/34L) <b>124.15 371.9</b> (Rwy 16L/34R)	GND CON <b>121.7 269.5</b>	CLNC DEL <b>121.7 269.5</b>	UNICOM <b>122.95</b>
------------------------	--	--	-------------------------------	--------------------------------	-------------------------



CATEGORY	A	B	C	D
S-ILS 16L		569-½	200 (200-½)	
S-LOC 16L		700-½	331 (400-½)	
CIRCLING	820-1 446 (500-1)	840-1 466 (500-1)	1000-1¾ 626 (700-1¾)	1140-2½ 766 (800-2½)



NW-1, 26 DEC 2024 to 23 JAN 2025

NW-1, 26 DEC 2024 to 23 JAN 2025