

# RNAV (RNP) Z RWY 34R

MAHLON SWEET FLD (EUG)

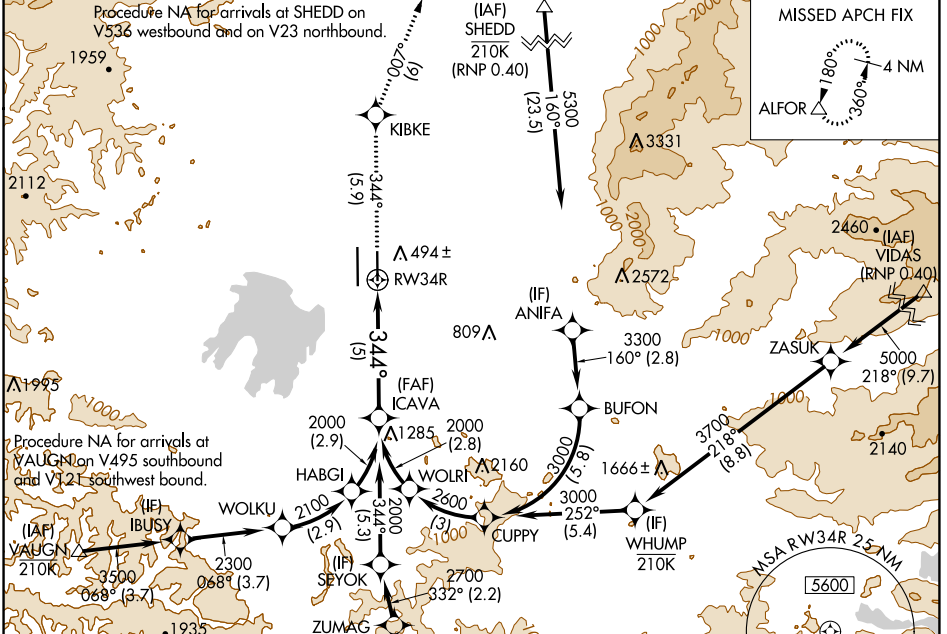
APP CRS	Rwy Idg	<b>6000</b>
<b>344°</b>	TDZE	<b>374</b>
	Apt Elev	<b>374</b>

RNP AR APCH - GPS.

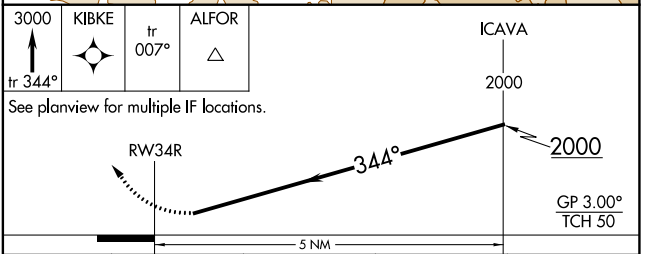
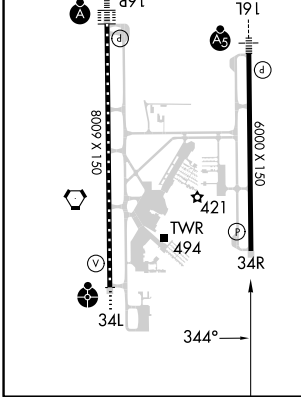
Simultaneous approach authorized. For uncompensated Baro-VNAV systems, procedure NA below -6°C or above 54°C.

MISSED APPROACH: Climb to 3000 on track 344° to KIBKE and on track 007° to ALFOR and hold.

ATIS	CASCADE APP CON *	EUGENE TOWER *	GND CON	CLNC DEL	UNICOM
<b>125.225</b>	<b>119.6 348.7</b>	<b>118.9 (CTAF) 371.9 (Rwy 16R/34L)</b> <b>124.15 371.9 (Rwy 16L/34R)</b>	<b>121.7 269.5</b>	<b>121.7 269.5</b>	<b>122.95</b>



ELEV 374	TDZE 374
HIRL Rws 16L-34R and 16R-34L	
TDZ/CL Rwy 16R	
REIL Rwy 34R	



CATEGORY	A	B	C	D
RNP 0.20 DA		754-1	380 (400-1)	
RNP 0.30 DA		786-1 1/8	412 (500-1 1/8)	

## AUTHORIZATION REQUIRED

NW-1, 26 DEC 2024 to 23 JAN 2025

NW-1, 26 DEC 2024 to 23 JAN 2025