

LOC I-PAE <b>109.3</b>	APP CRS <b>163°</b>	Rwy Idg TDZE Apt Elev	<b>9010</b> <b>570</b> <b>608</b>
---------------------------	------------------------	-----------------------------	---

# ILS Z or LOC Z RWY 16R

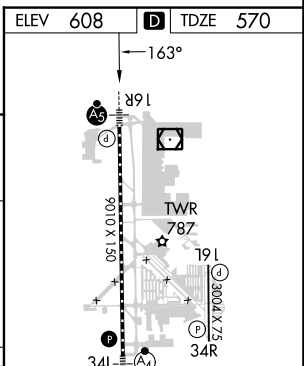
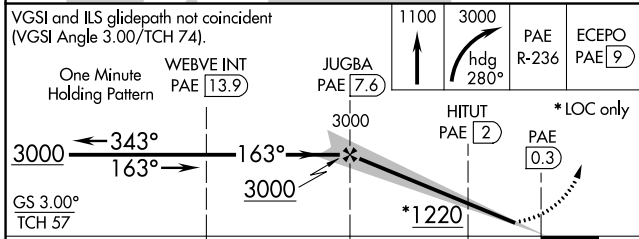
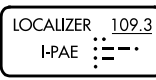
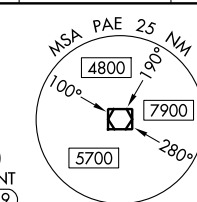
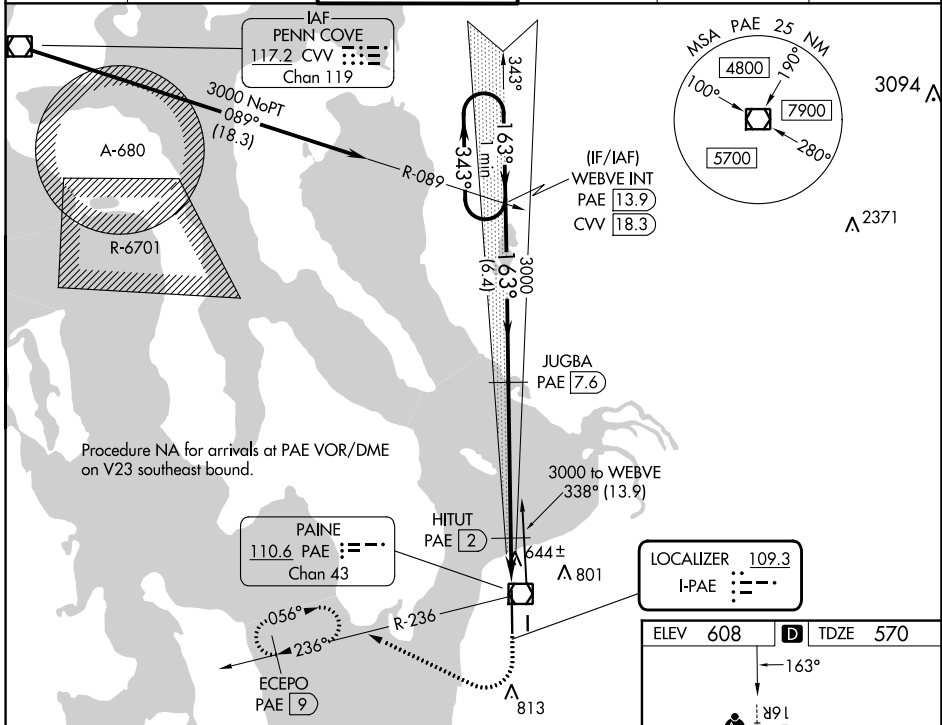
SEATTLE PAINE FLD INTL (P.A.E.)

**⚠** Circling Rwy 34R NA at night. DME required. For inop ALS, increase S-LOC 16R Cats C/D visibility to RVR 5500. DME from PAE VOR/DME. Simultaneous reception of I-PAE and PAE DME required.



**MISSED APPROACH:** Climb to 1100 then climbing right turn to 3000 on heading 280° and PAE VOR/DME R-236 to ECEPO/PAE 9 DME and hold, continue climb-in-hold to 3000.

ATIS <b>128.65</b>	SEATTLE APP CON <b>128.5 306.9</b>	PAINE TOWER * <b>132.95 (CTAF) 0 256.7</b>	GND CON <b>121.8 339.8</b>	CLNC DEL <b>127.175</b>	UNICOM <b>122.95</b>
-----------------------	---------------------------------------	---	-------------------------------	----------------------------	-------------------------



CATEGORY	A	B	C	D
S-ILS 16R	770/18 200 (200-½)			
S-LOC 16R	940/24	370 (400-½)	940/35	370 (400-¾)
<b>C</b> CIRCLING	1100-1	492 (500-1)	1120-1½	512 (600-1½)
			1160-2	552 (600-2)

TDZ/CL Rwy 16R  
HIRL Rwy 16R-34L  
REIL Rws 16L and 34R  
MRL Rwy 16L-34R

NW-1, 26 DEC 2024 to 23 JAN 2025

NW-1, 26 DEC 2024 to 23 JAN 2025