
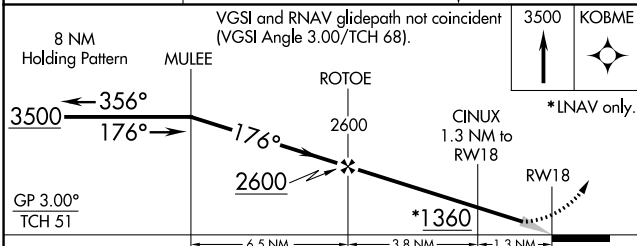
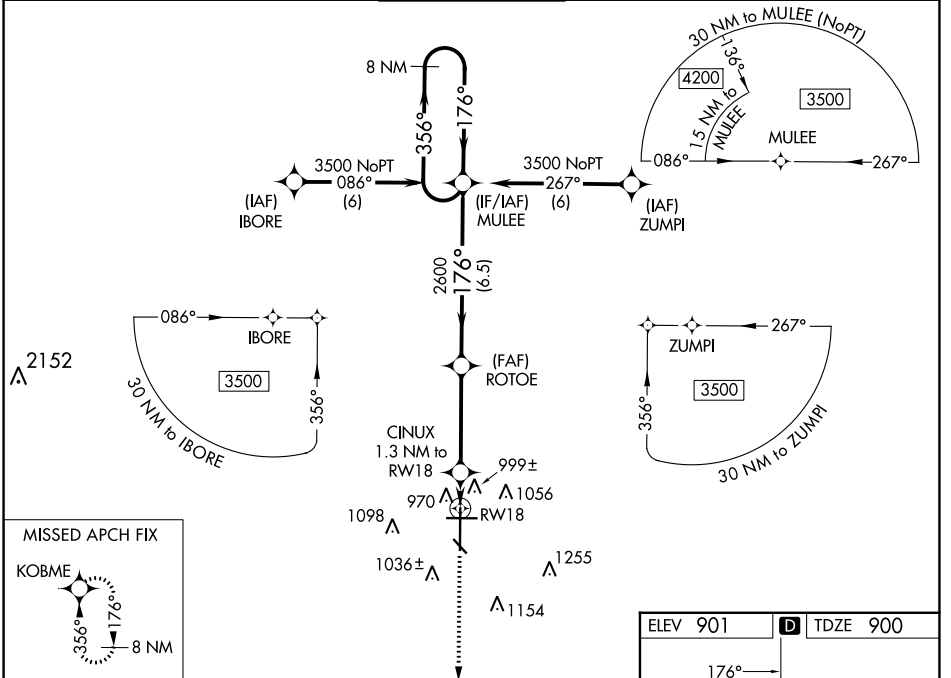


WAAS CH <b>40006</b> <b>W18A</b>	APP CRS <b>176°</b>	Rwy Idg TDZE Apt Elev	<b>9001</b> <b>900</b> <b>901</b>
--	------------------------	-----------------------------	---

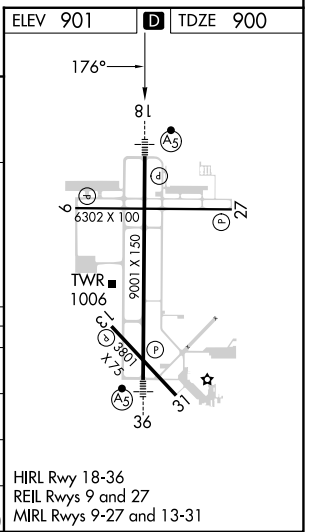
# RNAV (GPS) RWY 18

HECTOR INTL (FAR)

RNP APCH.		FARGO TOWER <b>133.8 290.4</b>		GND CON <b>121.9 348.6</b>	CLNC DEL <b>121.9 348.6</b>
<p><b>⚠</b> For inoperative MALS, increase LPV Cat E visibility to RVR 4000 and LNAV/VNAV Cat E and LNAV Cat D and E to RVR 6000. For uncompensated Baro-VNAV systems, LNAV/VNAV NA below -16°C (4°F) or above 47°C (116°F). #RVR 1800 authorized with use of FD or AP or HUD to DA.</p>		<p>MALS</p> 		<p>MISSED APPROACH: Climb to 3500 direct KOBME and hold.</p>	
ATIS <b>124.5 379.2</b>	FARGO APP CON <b>120.4 377.15</b>	FARGO TOWER <b>133.8 290.4</b>		GND CON <b>121.9 348.6</b>	CLNC DEL <b>121.9 348.6</b>



CATEGORY	A	B	C	D	E
LPV DA#	1100/24		200 (200-½)		
LNAV/VNAV DA	1272/40		372 (400-¾)		
LNAV MDA	1260/24 360 (400-½)		1260/50 360 (400-1)		
<b>C</b> CIRCLING	1380-1 479 (500-1)		1520-1¾ 619 (700-1¾)	1620-2¼ 719 (800-2¼)	1620-2½ 719 (700-2½)



NC-1, 26 DEC 2024 to 23 JAN 2025

NC-1, 26 DEC 2024 to 23 JAN 2025

HIRL Rwy 18-36  
REIL Rwys 9 and 27  
MIRL Rwys 9-27 and 13-31