

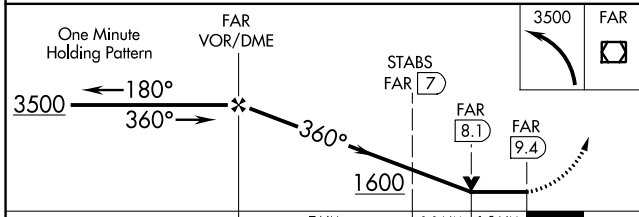
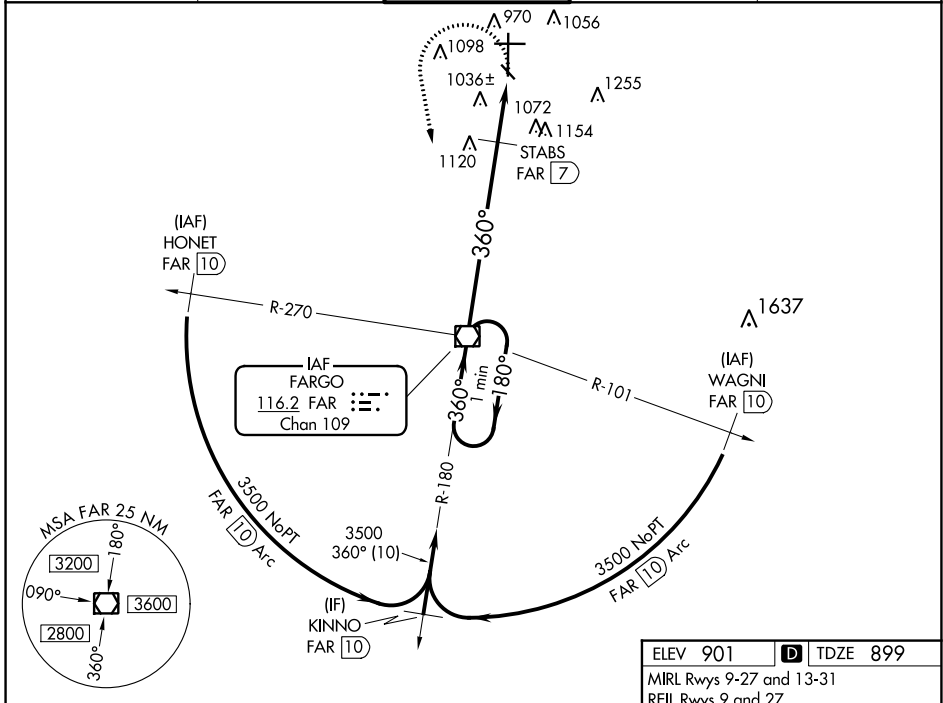
VOR/DME FAR <b>116.2</b> Chan <b>109</b>	APP CRS <b>360°</b>	Rwy Idg TDZE <b>899</b> Apt Elev <b>901</b>
--	------------------------	---

# VOR RWY 36

HECTOR INTL (FAR)

For inop MALSRS, increase S-36 Cat E visibility to 2½ miles. STABS Fix Minimums: For inop MALSRS, increase S-36 Cat E visibility to 1¾ mile.		MISSED APPROACH: Climbing left turn to 3500 direct FAR VOR/DME and hold.

ATIS <b>124.5 379.2</b>	FARGO APP CON <b>120.4 377.15</b>	FARGO TOWER <b>133.8 290.4</b>	GND CON <b>121.9 348.6</b>	CINC DEL <b>121.9 348.6</b>
----------------------------	--------------------------------------	-----------------------------------	-------------------------------	--------------------------------



ELEV 901 TDZE 899

MRL Rwy 9-27 and 13-31  
REIL Rwy 9 and 27  
HIRL Rwy 18-36 81

TWR 1006

STABS FIX MINIMUMS				
S-36	1380/24	481 (500-½)	1380/40	481 (500-1)
CIRCLING	1380-1	479 (500-1)	1520-1¾	619 (700-1¾)
S-36	1600-2	701 (700-2)	1600-1½	701 (700-1½)
CIRCLING	1600-1	699 (700-1)	1620-2¼	719 (800-2¼)
S-36	1600-2	701 (700-2)	1600-1¾	701 (700-1¾)
CIRCLING	1600-1	699 (700-1)	1620-2½	719 (800-2½)

FAF to MAP 9.4 NM

Knots	60	90	120	150	180
Min:Sec	9:24	6:16	4:42	3:46	3:08

NC-1, 26 DEC 2024 to 23 JAN 2025

NC-1, 26 DEC 2024 to 23 JAN 2025