

# VOR/DME RWY 15

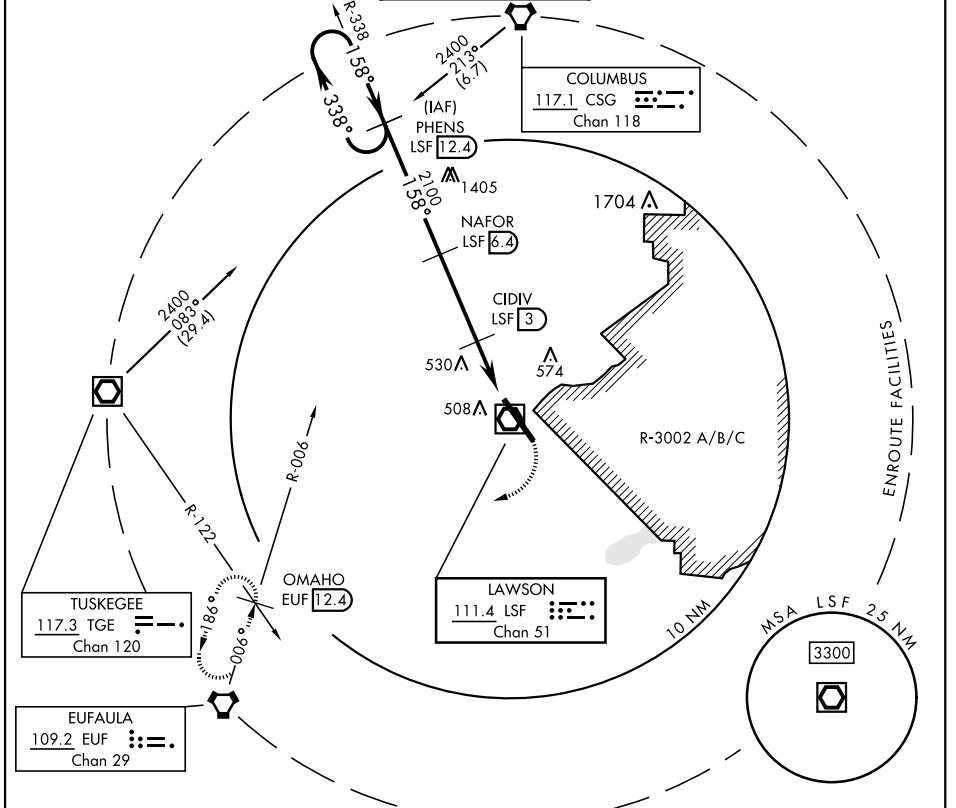
VOR/DME LSF <b>111.4</b> Chan <b>51</b>	APCH CRS <b>158°</b>	Rwy ldg <b>10,002</b> TDZE <b>226</b> Arprt Elev <b>227</b>
---	-------------------------	---

[USA]

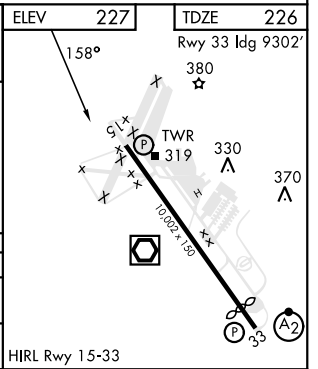
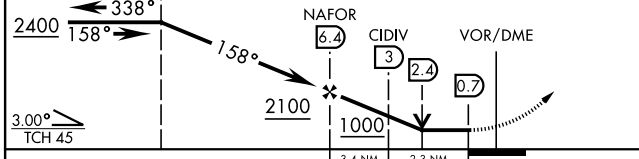
LAWSON AAF (KLSF)

**⚠** \* Circling not authorized E of Rwy 15-33. MISSED APPROACH: Climbing right turn to 2400 via heading 240° and EUF VORTAC R-006 to OMAHO INT/EUF 12.4 DME and hold.

ATIS ★ <b>134.375</b>	ATLANTA APP CON <b>125.5 323.1</b>	TOWER <b>119.05</b> (CTAF) <b>269.525</b>	GND CON <b>121.7 254.25</b>	CLNC DEL <b>121.7 251.15</b>
--------------------------	---------------------------------------	--	--------------------------------	---------------------------------



One Minute Holding Pattern PHENS 12.4	VGSI and descent angles not coincident.	2400 hdg 240°	OMAHO EUF 12.4	ELEV 227	TDZE 226
--	---	---------------	----------------	----------	----------



CATEGORY	A	B	C	D
S-15	820/50	594 (600-1)	820-1½ 594 (600-1½)	820-1¾ 594 (600-1¾)
<b>C</b> CIRCLING *	820-1	593 (600-1)	840-1¾ 613 (700-1¾)	880-2 653 (700-2)

FORT MOORE, GEORGIA 32°20'N-85°00'W LAWSON AAF (KLSF)

Amdt 9B 25JAN24

# VOR/DME RWY 15

SE-4, 26 DEC 2024 to 23 JAN 2025

SE-4, 26 DEC 2024 to 23 JAN 2025