

TACAN-A

TACAN POB Chan 85	APCH CRS 360°	Rwy ldg TDZE N/A	N/A
		Arprt Elev 225	

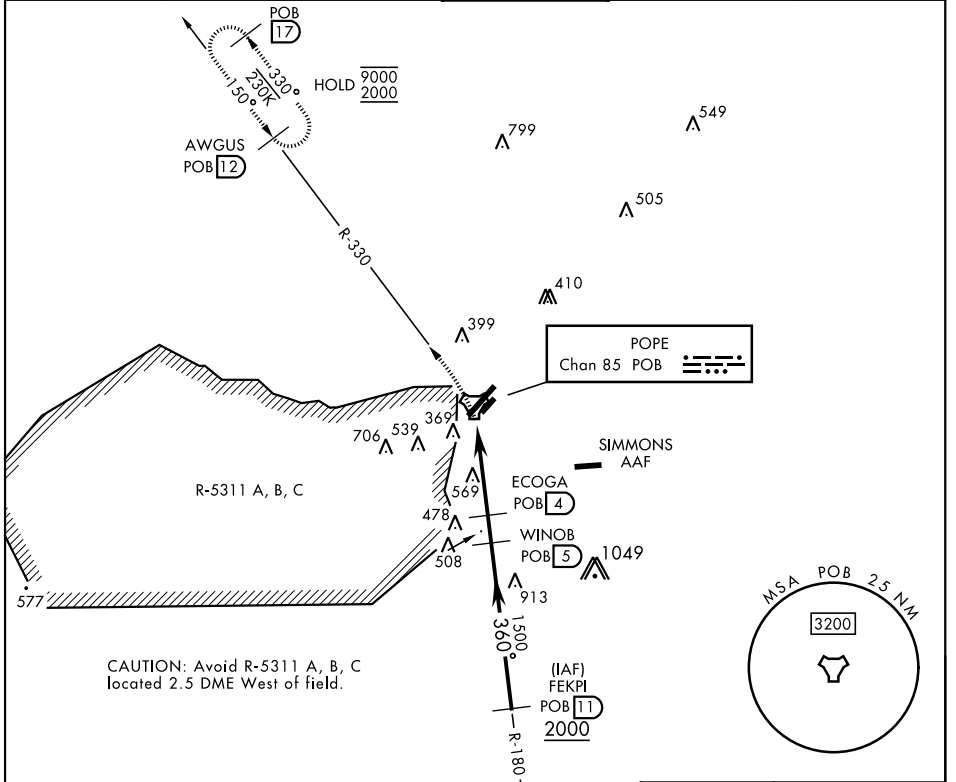
[USAF]

POPE AAF (KPOB)

RADAR required
 * Circling not authorized SE of Rwy 5-23.

MISSED APPROACH: Climbing left turn to 2000 via POB R-330 to AWGUS and hold.

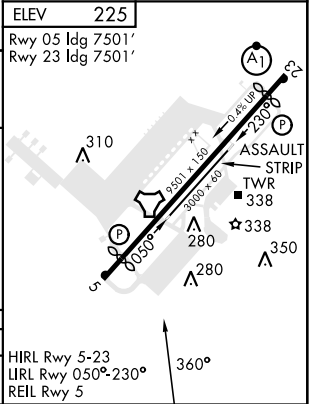
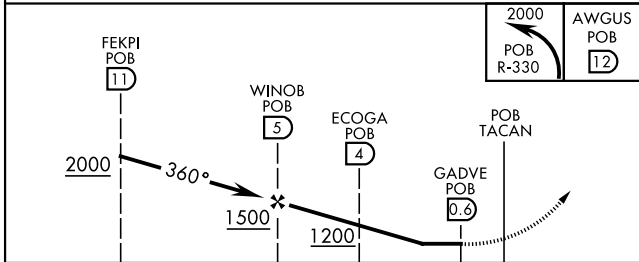
ATIS 132.3 353.725	FAYETTEVILLE APP CON 125.175 285.575 (271°-090°) 133.0 290.25 (091°-270°)	TOWER 135.025 291.1	GND CON 124.55 275.8	CLNC DEL 124.55 275.8
------------------------------	---	-------------------------------	--------------------------------	---------------------------------



SE-2, 26 DEC 2024 to 23 JAN 2025

SE-2, 26 DEC 2024 to 23 JAN 2025

EMERG SAFE ALT 100 NM 5300



CATEGORY	A	B	C	D
CIRCLING *	840-1	622 (700-1)	920-2 702 (800-2)	1060-2¾ 842 (900-2¾)

HIRL Rwy 5-23
 LIRL Rwy 050°-230°
 REIL Rwy 5

TACAN-A