

VOR/DME or TACAN RWY 18

MC GUIRE FLD,
(JOINT BASE MC GUIRE DIX LAKEHURST) (KWRI)

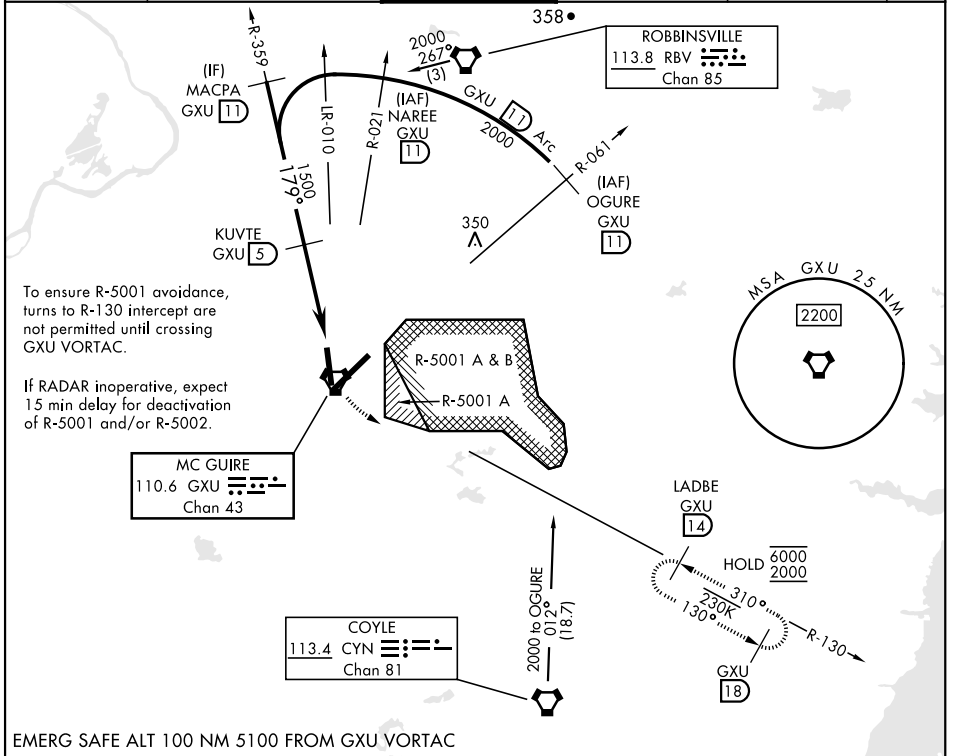
VORTAC GXU 110.6 Chan 43	APCH CRS 179°	Rwy ldg 7126 TDZE 123 Arpt Elev 141
--	-------------------------	--

AL-150 [USAF]

(JOINT BASE MC GUIRE DIX LAKEHURST) (KWRI)

RADAR required when R-5001 and/or R-5002 is active.		MISSED APPROACH: Climb to 2000 via GXU VORTAC R-130 to LADBE and hold, DO NOT turn prior to GXU.		
* Circling NA SE of RWY 24 and E of RWY 36 when R-5001 A/B active.				

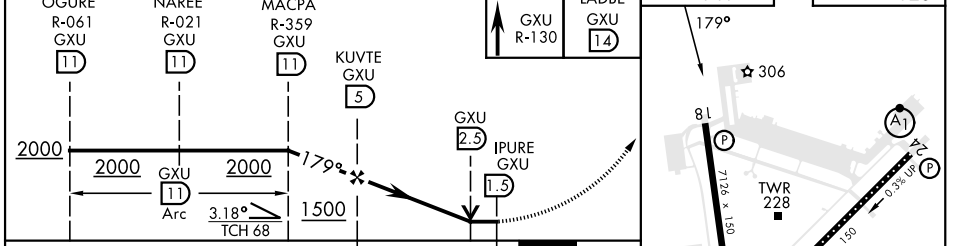
ATIS 110.6 270.1	MC GUIRE APP CON/DEP CON 126.475 363.8	MC GUIRE TOWER 118.65 255.6	GND CON 121.8 275.8	CLNC DEL 135.2 335.8	PAR
----------------------------	--	---------------------------------------	-------------------------------	--------------------------------	-----



NE-2, 26 DEC 2024 to 23 JAN 2025

NE-2, 26 DEC 2024 to 23 JAN 2025

EMERG SAFE ALT 100 NM 5100 FROM GXU VORTAC



CATEGORY	A		B		C		D		E	
	640-1	517 (500-1)	640-1½	517 (500-1½)	700-1½	559 (600-1½)	700-2	559 (600-2)	1200-3	1059 (1100-3)
CIRCLING*	680-1	539 (600-1)	700-1½	559 (600-1½)	700-2	559 (600-2)	1200-3	1059 (1100-3)	HIRL all rwys REIL Rwy 18, 36 TDZL/CL Rwy 6	

VOR/DME or TACAN RWY 18